



PRESIDENT'S MESSAGE

The Power of Show & Tell

As quilters, we tend to see quilts everywhere—window patterns in skyscrapers, tile floors, tree branches in shadow, the unusual color combinations of Mother Nature. We attend guild meetings and shows and workshops expecting to be inspired.

Our August 17 quarterly meeting Show & Tell was exceptionally rich. Often I'm not interested in duplicating exactly another's work but I take away bits and pieces and possibilities for adaptation. From our members' Show & Tell: The Little Dresses for Africa (Pat Karasick and Sandy Ray) caused me to rethink my dusty serger. Margaret Russell's hand-pieced and hand-quilted "Stars" proved how outstanding technical work can balance *with* design and not overpower it; also the white and royal blue coloration will appear soon in something I do! Megan Evans showed "Scrappy Trip" which emphasized how much I like scrappy anything. Stephanie Horsley's "Fashionista" was a terrific use of red and black, and in a feminine way which illustrates how dark fabrics can be used for quilts for women. The "Men's Shirt Quilt" by Lisa Redmond was a tour de force and stimulated thoughts about using all kinds of recyclable fabrics. Sally Wright took Sashiko panels made with the help of Nancy Ota's recent workshop and combined collected indigos for a stunning table runner. Can you imagine projects using other combinations? Somehow long cabin quilts have been dancing in my head and seeing Sandy Ray and Janet Thornber complete their versions has truly whet my appetite for revisiting this block with some new editions.

I sincerely hope you are noodling around with your own adaptable ideas.

Tina Nord

Jenny Carr Kinney September 18 Workshop

by Madeline Ehrlich and Marianne Simpson

Jenny Carr Kinney has been making quilts since 1968 and professionally teaching quilt making for over 25 years. She taught clothing construction when she joined the fashion design program at Ventura College. In 1999, Jenny developed the quilting curriculum - offered as elective credits for students studying to obtain an associate's degree through the Home Economics Department. Currently Jenny teaches all sections of quilt construction, pattern drafting, instruction writing, and quilt history.



Jenny appeared on *Simply Quilts* and teaches nationally. She specializes in historically inspired antique reproductions and period-appropriate quilting motifs sewn with modern equipment and using today's techniques.

Please join us Wednesday, September 18th, with Jenny Carr Kinney's lecture workshop- "Quilting Designs From the Past." This is a unique workshop in which Jenny will take you back in the history of quilting. You will learn all about designs, fabrics, and construction techniques used in quilting in your mother or grandmother's era and beyond.

Sue Rasmussen will be our speaker at the **Oct. 12 General Meeting** with a lecture, "A Desperate Housewife's Journey Trunk Show." She has taught machine quilting at Empty Spools Seminars in Asilomar and her quilts have been juried at many international quilt shows, including the Tokyo Great International Quilt Festival. Sue will be teaching a workshop on **Friday Oct. 11**, "**Curved Paper Pieced Flying Geese.**" Early discount rate (\$50) if registering before Sept. 11; \$55 for registrations after that date.

See the sign-up instructions on the "Upcoming Programs" page.

We encourage your programming and event ideas. If you know of an instructor you've read about or a technique you're just dying to learn, let us know. Maybe you have a field trip destination appropriate for Westside Quilters...well, please email us at Programs@WestsideQuiltersLosAngeles.org.

Wednesday, September 18



*Jenny Carr
Kinney*

WORKSHOP: Quilting Designs from the Past is an overview of American quilt history: An introduction to dating quilts using the key elements of style, design, materials and construction techniques. Learn 'period color confidence' for 19th and 20th century quilts. Just as popular colors and fabrics have changed over the last 200 years, variations in patchwork and applique patterns, quilting motifs and finishing occurred. You will expand your awareness of textile, social, industrial and economic history to help identify quilts of the past. For your own future quilts, Jenny will give you pointers on how to make your quilts look like they were made generations ago.

No sewing is required. There is no supply list. This is a 'lecture' format. Students are asked to bring two old quilts or quilt tops to discuss in class.

Note that this workshop is on a Wednesday.

9:30 am to 3:30 pm

St. Andrew's Lutheran Church

11555 National Boulevard east of Barrington Ave. in West Los Angeles

\$50 fee for members.



Sue Rasmussen



Friday, October 11

WORKSHOP: Curved Paper Pieced Flying Geese—Students immediately move beyond the basic paper pieced geese by adding a dramatic twist. Design a small quilt (18"x24") with curved flying geese. Students will learn how to design, draw, measure, and sew the pattern in class. Sue will discuss in detail many of the options available for using curved flying geese as borders or central design elements. Sue shares many secret tricks to paper piecing.

All students should have basic knowledge of how to foundation paper piece, and especially how to paper piece a section of flying geese.

9:30 am to 3:30 pm

St. Andrew's Lutheran Church

11555 National Boulevard (east of Barrington Ave. in West L.A.)

\$50 fee for members who register before Sept. 11; \$55 for those who register after Sept. 11.

Check the "Upcoming Programs" page for information on registering for WQ workshops.



Saturday, October 12 –Presentation at Quarterly WQ Meeting

Sue Rasmussen

A Desperate Housewife's quilt Journey Trunk Show

A diversified quilt instructor since 1988, Sue Rasmussen loves to inspire her class participants to stretch beyond traditional confinements through quick methods of paper foundation piecing, machine pieced landscapes and beautiful, intricate machine quilting. Sue admits that the most gratifying aspects of teaching are the interaction with each student, sharing her extensive knowledge of quilting and the delight of watching students' faces light up in her class. "There is nothing more gratifying than seeing quilts from my students who are employing one of my techniques or ideas, and have continued to grow as quilters because of something they have learned in my class!"

Sue has degrees in Textile Sciences and Agricultural Economics from University of California, Davis and has produced an extensive and varied body of work. She has competed nationally and internationally, having quilts accepted at Tokyo International Great Quilt Festival, Paducah, Pacific International Quilt Festival and Road to California. She has been a guest on the Quilt Show and Simply Quilts, and had done professional quilting for clients such as Alex Anderson, Sharon Craig, and C&T Publishing.

Saturday, January 11, 2014



Jean Impey



Since the age of 9, Jean has used color and art to communicate. First as a painter, then as a quilter, Jean creates truly unique quilts, sharing her special point of view. At the age of 10, her mother taught her the basics of sewing. Jean made the medium her own. After years of making her own clothes, in 2007, Jean created her first quilt. A member and chair of several guilds, including Beach Cities Quilt Guild, Surfside Quilters Guild and Studio Art Quilters Guild Jean's work is in public and private collections in the US and Canada. Her work was included in Gwen Marston's book, Liberated Quiltmaking II.

WORKSHOP: *Garden Party Pillow*—

Appliqué technique for pillow, wall hanging, clothing, decorating. Raw edge free-motion machine quilting. Collage appliqué with abandon—'reckless and liberated' without any glue or fusible products.

Location and Workshop Fee: TBA

UPCOMING PROGRAMS

Workshops open for registration: September and October workshops are open for registration

To Register:

At the **WQ website**; choose *Calendar* and scroll down to individual workshops. See the link to the Workshop Registration Form (which you can fill in on-line and then print) and the supply list.

First, please email Programs@WestsideQuiltersLosAngeles.org of your intent to attend a workshop.

See the workshop no-refund policy (substitutions allowed) shown on the Workshop Registration Form.

WQ will hold your space at the workshop for 14 days to allow time to mail Workshop Registration Form and payment to the WQ post office box. For last-minute registrations, contact Program Co-Chairs. Credit cards/debit cards now accepted. Note Early Registration discounts available 30 days or more before workshops.

Quarterly Meetings: WQ members attend at no charge. Non-members are welcome for a \$10.00 guest fee.

Meetings at St. John's Presbyterian Church, 11000 National Boulevard at Military (3 blocks East of Sepulveda), Los Angeles, CA 90064.

Workshops: Fees vary. Note early registration discounts may apply. Non-members pay a \$15.00 surcharge.

Workshops are held at St. Andrew's Lutheran Church or Westwood Presbyterian Church, from 9:30 am to 3:30 pm.

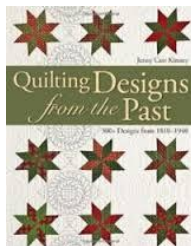
**September 18
Wednesday**

WORKSHOP

Jenny Carr Kinney

Quilting Designs From the Past

Registration is open.



Learn to date and identify vintage quilts from an authority.

\$50 fee to members.

**October 11
Friday**

Workshop

Sue Rasmussen

Curved Paper-Pieced Flying Geese

Registration is open.

\$50 fee for members,

if paid before Sept. 11

\$55 if paid after Sept. 11.



Add a dramatic twist to basic paper-pieced geese and design a small quilt.



All students should have basic knowledge of how to foundation paper piece, and especially how to paper piece a section of traditional flying geese.

**October 12
Saturday**


GENERAL MEETING

SUE RASMUSSEN

A Desperate Housewife's Quilt Journey

Trunk Show

A humorous take on the development of a quiltmaker of both intricately pieced quilts and machine pieced landscapes and pictorials.

November 9 Saturday	Philanthropy workshop Registration opens Oct. 12	For members only	<i>Giving for Thanksgiving</i> Children's Project
December 8	Holiday Tea	For WQ members only	Celebrate the Holidays and give to others in need.
January 11, 2014 Saturday	Workshop	Jean Impey	"Garden Party" "Appliqué technique for pillow, wall hanging, clothing, decorating. Raw edge free-motion machine quilting. Collage appliqué with abandon—'reckless and liberated' without any glue or fusible products..
			
February 7 Friday	Workshop	Sheila Frampton-Cooper	"Express Your True Self: One Piece at a Time" Create a pieced abstract quilt with little or no plan. Basic design and composition, color and value, quilting. Tips on challenges of improvisational design. Trust your instincts.
February 8 Saturday	GENERAL MEETING	SHEILA FRAMPTON-COOPER	"Creating from a Place of Trust" rising quilting star Sheila shares personal images and provides insight into her creative inspirations and design process. Hear about removing self-imposed blocks.
			
March 14 Friday	Workshop	Natalie Barnes	"Rotary Cutting with No Rule(r)s" Beyond the Reef owner teaches a working techniques class using modern ("liberated") piecing. "If you sew long enough, the pieces are bound to get bigger."
April 12 Saturday	Workshop	Andi Peredja	"Shibori Dyeing" Saturday Come play with poles, fabric and dyes! What could be more fun? Learn <i>Arashi Shibori</i> dyeing and create your own unique fabrics. Dyes supplied.
May 3 Saturday	GENERAL MEETING	JANE SASSAMAN	"Under the Influence" .Illinois-based quilt, fabric and pattern designer discusses the visual and philosophical ideas which influenced her. A very colorful experience intended to inspire you.
May 4 – 5 Saturday and Sunday	Workshop	Jane Sassaman	2-Day Workshop - "Abstracting from Nature" Sunday and Monday. Examine a wide variety of artists' interpretations of nature. Experiment with abstraction and exaggeration to capture the essence of your favorite flora and achieve dramatic visual effects. Translate these ideas into fabric.

PHILANTHROPY

Co-Chairs Tanya Heldman and Debbie Nussbaum

Philanthropy

We want to thank all WQ members who showed their philanthropy projects in Show & Tell at our August 17th General Meeting. The creativity and beauty of everyone's work is inspiring.

A Big Thank You goes to our philanthropic members for their donations on behalf of Westside Quilters: Lisa Drew, Sally Wright, Bobbi Leung, Nancy Sharpe, Pat Karasick, Tonya Heldman, Sue Correll, Sandra Lauterbach, Sandy Ray, Patti Post, Jennie Kraft, and Roberta Walley. Donations consisted of large quilts, small quilts, placemats, Holiday stockings, heart pillows, wall art, and many hours of quilting time. The items were donated to the following charitable groups: Quilts from the Heart, LAPD – Child Abuse Unit, Quilts for Cancer Patients, Dresses for Africa, Meals on Wheels, YMCA – Transitional Housing & Education, Camp Pendleton, St. Joseph Cares, and Furnishing Hope.

Giving for Thanksgiving ---Remember to save the date of **Sat., November 9**, for WQ's Philanthropy Workshop "Giving for Thanksgiving". The workshop will be "A Day to Sew for Children" (exact details to follow). This free to members workshop will give you an opportunity to give something to others in the spirit of Thanksgiving. Sign-up will be at our next meeting. Take a look at Sally Wright's baby quilt for the St. Joseph Center!



MEMBERSHIP

Sally Wright, Membership Chair

As Membership Chair I am so happy to report a very successful membership renewal period Westside Quilters now boasts 94 members - including 19 new memberships since May 31. By now all members, both renewing and new, should have received a 2013-14 membership card and website log in information. If you haven't received the card or membership log in information, or if you have questions, please contact me at Membership@westsidequiltereslosangeles.org. Your Membership letter also included 5 WQ referral cards for you to pass on to friends and acquaintances who might be interested joining. Each card will allow the bearer to attend one WQ quarterly meeting without our normal \$10.00 guest fee. If you need more cards, please let me know.

We welcome all our new members...

Sylvia Adams
Christine Chambers
Russell Conte
Megan Evans
Vicki Fisher-Lerer
Toni Glick
Joann Killeen
Eva Killingsworth
Miyoko Nakamura
Patti Post
Lisa Redmond

Margaret Russell
Kim Ryan
Betty Seinfeld
Barbara Silva-Kaufman
Carol Takemoto
Suzanne Toji
Chris Wisdom
Kathleen Yamazaki

Welcome

THE TREASURER'S REPORT

September

THE TREASURER'S REPORT

Opening Balance July 24, 2013		\$8,853.24
INCOME		
Dues	\$500	
Workshops	\$1035	
Guest	\$10	
TOTAL INCOME		\$1,545.00
EXPENSE		
Meeting Expense	(\$722.42)	
Workshop Expense	(\$1,392.42)	
Insurance (SCCQG)	(\$30.00)	
Square Up fees	(\$4.14)	
Misc	(\$4.00)	
TOTAL EXPENSES		(\$2,152.98)
Closing Balance August 29, 2013		\$8,245.26

Aileen Cooke, Treasurer

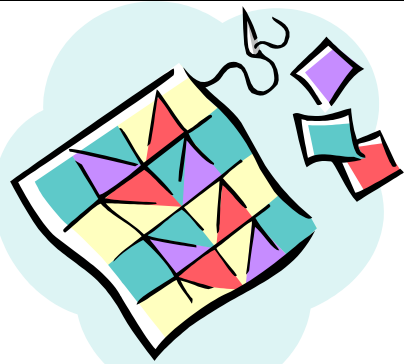


Virginia Marshall	9/10
Tina Nord	9/10
Suzanne Toji	9/14
Nancy Sharpe	9/17
Betsy Barker	9/21
Megan Evans	9/22
Sally Silvers	9/25
Chris Wisdom	9/26

FAMILY CHARITIES FOR HOLIDAY CONTRIBUTION

The Executive Board would like your suggestions for family charities to which we can donate \$500 (minimum) in December. We'll continue our traditions at our 3rd Annual Member Holiday Tea (Sunday, December 8) where we collect a \$10.00 cash contribution from everyone at the door. The guild will supplement this amount to make \$500.00. We like to give to family community charities, as opposed to arts or medical research organizations, early in the holiday season. We can donate to one or several charities. Please send your personal charity suggestions to Pres@WestsideQuiltersLosAngeles.org.





A NEIGHBORLY QUILT CALENDAR

SEPTEMBER	
September 8-9 San Fernando Valley	<u>Lyn Mann</u> September 8 Workshop: "Throw Tradition A Curve" September 9 Presentation: "Head for the Border"
September 11-12 Santa Monica	<u>Betty Alofs</u> September 11 Presentation: "My Quilting Journey" September 12 Workshop: "Quilt Your Favorite Photograph"
September 11 Glendale	<u>Latifa Saafir</u> September 11 Presentation: "Modern Quilts: Past, Present and Future"
September 12-13 Valley Quiltmakers	<u>Maggie Bell</u> September 12 Presentation: "Bits and Pieces" September 13 Workshop: "Bargello with a Twist"
September 17-18 South Bay	<u>Phyllis Binkley</u> September 17 Presentation: "Showing Depth & Space in Quilts" September 18 Workshop: "Building a Landscape"
September 18 Westside Quilters	<u>Jenny Carr Kinney</u> September 18 Workshop: Quilting Designs from the Past
OCTOBER	
October 2 Santa Monica	<u>Julie Herman</u> October 2 Presentation: "Modern Quilting Quilt Show"
October 9 and 12 Glendale	<u>Bobbie Finlay</u> October 9 Presentation: "The Quilt Revival" October 12 Workshop: "Tile Quilt Block"
October 11-12 Westside Quilters	<u>Sue Rasmussen</u> October 11 Workshop: "Curved Paper-Pieced Flying Geese" October 12 Presentation: "A Desperate housewife's Quilt Journey & Trunk Show"
October 13-14 San Fernando Valley	<u>Peggy Martin</u> October 13 Workshop: "Star Project" October 14 Presentation: "Beyond Tradition"
October 15-16 South Bay	<u>Judy Sisneros</u> October 15 Presentation: "Imagination and Inspiration Trunk Show" October 16 Workshop: "Winding Paths"

NOVEMBER	
November 6 and 7 Santa Monica	<u>Terry Waldron</u> November 6 Presentation: "The Art of Doing it All" November 7 Workshop: "Scraffito"
November 13 and 16 Glendale	<u>Phyllis Binkley</u> November 13 Presentation: "Showing Depth and Space in Quilts" November 16 (Sat) Workshop: "Thread Painting Landscape Art"
November 9 Westside Quilters	<u>Giving for Thanksgiving</u> November 9 Workshop: "Sewing for Children"
November 10 and 11 San Fernando Valley	<u>Laurel Anderson</u> November 10 Workshop: "How to Cheat at Applique" November 11 Presentation: "Laurel's Search for the Perfect Applique"
November 19 and 20 South Bay	<u>Deb Cashatt and Kris Sazaki</u> November 19 Presentation: "Furoshiki—fun with fabric folding" November 20 Workshop: "Batik Water Quilts"
Visit the Event Calendar for the Southern California Council of Quilt Guilds: www.sccqg.org	

OUT AND ABOUT



January 23-26, 2014

Ontario Convention Center
2000 E. Convention Way, Ontario, CA

Hours:

Wed., January 22: 7pm-9pm (preview night)
Thursday, January 23-Saturday, January 25: 9am-6pm
Sunday, January 26: 10am-3:30pm

Over 170 Vendors....Classes begin on Monday, January 20

Class registration is still available.
New Classes Added

Class schedule now online – www.road2ca.com

The Santa Monica Quilt Guild A Fall Boutique

"Crafting by the Sea"

Saturday, November 23, 2013
10:30 am - 3:30 pm

First United Methodist Church
1008 11th Street
Santa Monica 90403



Opportunity Quilt 2013

The SMQG has been invited to bring their opportunity quilt to the October 12 WQ General Meeting. Raffle tickets will be available for this beautiful quilt..

Drawing will be on November 23.

TRAVELING THIS FALL?

Here are a few quilting favorites to check out:

[Le Rouvray, Paris, France](#): Quilt shop only a few steps from Notre Dame and Shakespeare and Company!

[European Patchwork Meeting, Alsace, France](#): September 12-15

One of the largest shows in Europe.

[North Cities Quilt Guild Quilt Show, Placentia, CA](#): Sept 13-14

Sept. 13 and 14—10am-4pm

[Harvest of Quilts Show, Aliso Viejo](#): September 14-15

Flying Geese Quilters Guild Annual Show

Sept. 14—10am-4pm Sept. 15—10am-3:30pm

[Conejo Valley Quilters Quilt Show, Thousand Oaks, CA](#): September 21-22

September 21 and 22--10 am to 4pm

[High Country Quilter's Guild Quilt Show, Lancaster, CA](#): October 4-5

October 4 and 5--10 am to 5pm

[Valley of the Mist Quilters Quilt Show, Temecula, CA](#): October 5

15th Annual Old town Quilt Show (Free) 10am-4pm

[Idyllwild Autumn Quilt Show, Idyllwild, CA](#): October 12

10am-3pm

[Pacific International Quilt Festival, Santa Clara](#): October 17-20

Outstanding prize-winning quilts and lots of vendors. Classes are online now!

[Orange Grove Quilters Guild, Garden Grove, CA](#): Oct. 19

Tea and Auction 11am Preview—1pm Auction

[Wandering Foot Quilt Guild Quilt Show, Arcadia, CA](#): Oct. 19

10am-3pm

[Quilters by the Sea Quilt Show, Long Beach, CA](#): Oct. 26-27

Oct. 26—9:30am-5pm Oct. 27—10am-4pm

[International Quilt Festival, Houston](#): October 31 – November 3

One of the largest shows in the country, with classes from every well-known teacher

Visit the Event Calendar for the Southern California Council of Quilt Guilds: www.sccqg.org for more information on many of the local quilt shows listed on this page.

WESTSIDE QUILTERS EXECUTIVE BOARD MEETING

The July 27, 2013 meeting of the Executive Board of Westside Quilters (WQ) was called to order at 10:10 a.m. by President Tina Nord. Other Board Members in attendance were Aileen Cooke, Sally Wright, Roberta Walley, Tanya Heldman, Debbie Nussbaum, Vicki Ebin and Sally Madigan. Stephanie Wexler also attended.

A motion to approve the minutes of the June 15, 2013 WQ Executive Board meeting was put forward by Sally Wright and seconded by Roberta Walley. The minutes were approved.

Betsy Barker's resignation as co-editor of the WQ Newsletter was accepted with regret. Veronica Gray agreed to be appointed to replace Betsy. Veronica's appointment was placed before the Board for approval by Tanya Heldman and was seconded by Sally Wright, and approved by a vote of the Board.

Tina spoke of the Arts and Crafts Center in Santa Monica, and also mentioned the value of mini-groups to individual quilters, and to the group as a whole because they often are sources of projects for philanthropy efforts.

Tanya Heldman, Tina Nord and Sally Wright attended the Southern California Council of Quilt Guilds (SCCQG) quarterly meeting. Much of the meeting centered on revamping the spring "Meet the Teachers" event. Tina told the SCCQG Board that WQ could be counted on for 5 volunteers for the 2014 "Meet the Teachers" meeting.

WQ's membership, according to chair Sally Wright is now 79 members. Sixty-seven are renewals, and 12 are new members. More renewals are expected. The membership roster will not be updated until after the August meeting, which will allow last-minute renewals to be listed. Presently, ten people have indicated an interest in joining a mini-group. A sign-up sheet will be provided at the August WQ meeting to give everyone an additional opportunity to sign up for a mini-group.

There was a discussion about WQ's November 9th Philanthropy Workshop. Rather than focus on one particular group, the workshop will concentrate on children's projects. The exact details of the workshop will be determined later. In a similar vein, Roberta spoke about a blog she had come across about artisans/crafters donating their creations to charities, "Crafts Changing Hearts."

Treasurer Aileen reported that WQ's balance is \$8,853.24. The rent for Sharon Schamber's workshop and our monthly meeting has been paid. There are still some other costs to be covered, but the workshop is filling up well. More sign-ups are expected to add to the 10 paid so far. WQ's post office box rent has been raised to \$120 for the year.

Tanya Heldman updated the Board on Sewing Arts offer to allow WQ members to use SAC's longarm machine to quilt charity quilts. Supplies must be provided or paid for by those whose quilts are being quilted. Russell will have a one-time training session on the use of the longarm, and one day a month will be set aside for WQ to use the machine. Tanya announced that Lisa Redmond will be the scholarship student for Sharon Schamber's workshop. The September workshop/lecture of Jenny Carr Kinney is not slated for a scholarship student.

WQ's August meeting will include a 15 minute presentation by Los Angeles Modern Quilt Guild's (LAMQG) president, Megan Evans to acquaint WQ members with the quilting style represented by the LAMQG. Stephanie Horsley will be demonstrating hand piecing, and the Showcase Speaker will be Jean Impey of the Sewing Party shop in Laguna Hills. Jean will also conduct WQ's January workshop.

Additionally, Madeline will be contacted about hosting the potluck for Sharon Schamber; the YarnOver truck needs to be booked for February, and our Holiday Tea location and date remain open.

Various fund raiser ideas were discussed including book sale or white elephant sale, and a UFO lottery. Details of the Vacation Home Quilt Retreat are still being worked out, but members will be introduced to the idea at the August and October meetings.

WQ's Newsletter deadline is August 28, the Wednesday before Labor Day. The newsletter will be published after the holiday. There was some discussion about advertising in the newsletter: Should the advertising be directed only to members? Are there any problems with non-profits accepting/providing advertising to the public? That discussion will continue at the next Board Meeting on Saturday, September 28th.

Respectfully submitted by Sally Madigan, Secretary

Next Executive Board Meeting:

The next meeting of the Executive Board will be held on

Saturday, September 28 at 10:00 am

All members of Westside Quilters are welcome to attend with prior notice to

Pres@WestsideQuiltersLosAngeles.org.

Our Mission

A new kind of guild organized for educational and charitable purposes; to promote cooperation and the exchange of ideas among quilters; to instruct members in methods and techniques of traditional and contemporary creative quilting; to serve mini-groups and their philanthropic endeavors within the community; to inspire personal achievement.

Officers

President	Tina Nord
Vice President	Roberta Walley
Secretary	Sally Madigan
Treasurer	Aileen Cooke
Program Co-Chairs	Madeline Ehrlich and Marianne Simpson
Membership Chair	Sally Wright
Newsletter Co-Chairs	Veronica Gray and Vicki Ebin
Philanthropy Co-Chairs	Debbie Nussbaum and Tanya Heldman
Website Manager	Sally Wright

Appointed Positions

Nancy Sharpe	Hospitality
Stephanie Wexler	Meeting Set-Up
Tanya Heldman	Photographer

Mailing Address

Post Office Box 641925
Los Angeles, CA 90064

F.E.I.N. 27-3145733
(Federal Employer Identification Number)

Website www.WestsideQuiltersLosAngeles.org

Facebook We're on Facebook. Check out the banner on the WQ website home page (lower center).

Amazon There is a boxed message in the lower center of our website home page giving a direct link to Amazon. By using this link, anything you purchase earns a 4% "dividend" paid directly to WQ. *This only works if you enter the Amazon website from the WQ website link.*

IGive.com This is another way to benefit WQ when shopping on the Internet. Here you need to register (the IGive.com logo appears in the lower center on the WQ website home page and links you directly to IGive.com). Over 800 Internet retailers participate (Barnes & Noble, Bed Bath & beyond, Enterprise Rent-A-Car, Lancome to name a few). Follow the instructions at IGive.com.

Non-Profit Status Westside Quilters is tax-exempt from Federal income tax under section 501(c)(3) of the Internal Revenue Code, and classified as a public charity under section 170 of the Code, according to the determination letter dated May 26, 2011 received from the Internal Revenue Service. The effective date of exemption is June 17, 2010. Donations to **Westside Quilters** are fully tax-deductible for individuals and other entities such as corporations, partnerships, trusts; **Westside Quilters** is qualified to accept tax deductible bequests and gifts or transfers of gifts.