



PRESIDENT'S MESSAGE

Sitting here trying to uplift myself, much less anyone else, is very hard to do on a hot sweltering day. It's not just this one day, it has been many days now of this hot, humid weather. What happened to our arid climate?

I now envy those who work in air conditioning. I find it a pure pleasure these days to walk into the grocery store just to cool down. I sincerely hope we're coming to a cool down soon; otherwise I may experience a meltdown. I try to get some quilting done but it's impossible when my sewing area reads over 80 degrees.

I finished the last legs of organizing the quilt show for the LDS Visitor's Center. I hope everyone is planning on coming by to view it, if you haven't already. I have never planned nor organized a quilt show before, and I now have a much greater appreciation for those who do. I hope y'all like what you see (a little Southern hospitality to go with our humidity).

Luckily, my husband didn't say a word about all the quilts piled on the living room coffee table. Actually, I'm a bit surprised he didn't... I think he's been too busy "playing" out in the garage with all his woodworking machinery/tools (he's retired, too). I hate to admit it, but he does make great furniture, children's toys, wood carvings, etc. We always thought one day we might do fairs, him with his woodworking and me with fabric. We're only six months into retirement so I guess we still have time.

Please come by the LDS Visitor's Center to see all the remaining guild's exhibits (Westside Quilters – 9/6 to 9/18, and African American Quilt Guild – 9/19 to 10/3). We have all worked very hard behind the scenes to make this event happen. The event is free to all, plenty of free parking and is open daily from 9 a.m. to 9 p.m. The Visitor's Center is at 10777 Santa Monica Blvd., at Santa Monica Blvd. and Manning. Enter on Manning and follow the signs.

See you there!

Perla Rothenberg



September 20 Making Faces, Too Workshop

Spend a day with Ann Turley making a self-portrait. Ann will show you how to fuse a fun face using fabrics you would never think of using. After the fusing is done, learn to let yourself go with some creative embellishments. Why not make two? His and hers, and use them as place mats. Sounds like a lot of fun! Also, what a great project to use up scraps. All you need is 12"x12" background fabric - should read as a solid or be in high contrast to face elements. Two contrasting 6x8 fabrics for the face. One 3x5 light for the neck. Smaller chunks of various colors, prints and textures for the eyes, eyelids, nose, mouth and lips. A large print novelty fabric- fat quarter or larger. We will be cutting motifs from it to attach to the face to create character. One yard WonderUnder or other fusible web. Buttons, charms, beads or other fun stuff. Check the supply list at www.WestsideQuiltersLosAngeles.com for more info, and how to contact Ann with your pre-class questions.

The Workshop member fee is \$50 (\$65 for non-members). There is also a \$10 kit cost not included in the workshop fee, and payable to the instructor on the day of the workshop. To enroll, email your intention to Programs@WestsideQuiltersLosAngeles.org, and then download a Workshop Registration Form at the Westside Quilters website under the Calendar heading. The Workshop is from 9:30 – 3:30, and will be held at the Multipurpose Room at the Veteran's Memorial Complex, 4117 Overland Ave., (SW corner of Culver and Overland) in Culver City.

PROGRAMS & WORKSHOPS

It's hard to believe summer is over already. Where is the time going!

Well, some members of our guild ended their summer activities by participating in a wonderful, educational workshop with Laurel Anderson. Teaching a number of different techniques and helping those in attendance build their own reference manual to help in future projects, Laurel shared ideas and options for creating beautifully appliqued quilts. Reviews following the workshop were raves and I even heard one person say to Laurel, "after taking your class I knew this is exactly where I want to be." It's always fun to see people so excited about learning new things!



We have a few opportunities left for you to have the same experience with one of our workshops. On Saturday, September 20, Ann Turley will be joining us for "Making Faces Too." She will teach three different methods you can use for creating your own quilted self-portrait. You will end the day with a quilt unique to you. We have just a couple of spaces left for this workshop. Come join us and unleash let your creative, adventurous juices flow!

Early registration is also now open for our workshop on Friday, October 24 with acclaimed wearable artist and quilter, Lisa Coulombe! Lisa says, "I am a full-time card carrying quilting addict! What could be more fun than to take beautiful fabrics, slice and dice them, rearrange them and put them back together into quilts!? Well, making them into jackets of course!" This is a great opportunity to expand your quilting horizon make either a jacket or tote bag using Lisa's technique of sewing curves without actually stitching curved seams.

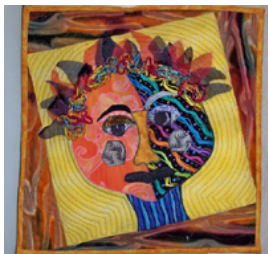
Please e-mail Programs@WestsideQuiltersLosAngeles.org to sign-up for either of these exciting and informative workshops and don't forget to attend the next general meeting on Saturday, October 25 and be the first to reserve a spot for the 2015 workshops!

Until next time...Happy Quilting!

Stephanie Horsley

Saturday, September 20, 2014 — 9:30am to 3:30pm

Ann Turley: "Making Faces, Too"



In this class students will learn three methods that lead to a self-portrait, Use Ann's patterns as a jumping-off point, or try a woodcut-style face. Either way, you will end the day with a small quilt, unique to you.

Fees for Members: \$50.00

Fee for Non-Members: \$65.00

Kit cost: \$10.00 not included in workshop fee payable to the instructor on day of workshop

**Location: Veteran's Memorial Complex
Multipurpose Room**

4117 Overland Avenue, Culver City, CA 90230



Programs & Workshops continued on next page (pg. 3)

PROGRAMS & WORKSHOPS (cont.)

Friday, October 24, 2014 — 9:30am to 3:30pm

Lisa Coulombe: “Everyday Wearable Art and Beyond”



With Lisa’s workshop, there are four different projects you can choose from that include curved piecing and bias techniques on quilted jackets and tote bags. Try these challenging, but easy to make curves for your next tote or jacket. Lisa will show you how to use the curves with or without flanges in creating a fun and unique piece of art.

Fees for Members: \$50.00 (\$45 for early registration by August 20)

Fee for Non-Members: \$65.00






**Location: St. Andrew’s Lutheran Church
11555 National Boulevard, Los Angeles, CA 90064**

And get excited for what’s upcoming in 2015!!!

January 10	UFO Sewing Day	Bring your unfinished WIPs for a free day of sewing
February 6-7	Debbie Maddy	A workshop “Labyrinth” on Feb. 6 with no diamonds or Y seams. At the General Meeting on Feb. 7, Debbie will present “No Diamonds, No Y Seams/Old Quilts, New Methods.”
March 14	Christen Brown	Workshop “Ribbonwork Flower Garden”
April 11	Shara Hicks	Workshop “Zentangle: Anything is Possible One Stroke at a Time”
May 1-2	Charlotte Angotti	A workshop “Let Me Surprise You” on May 1 with a furnished kit of cut fabrics! At the General Meeting on May 2, Charlotte will present “Your Stash! My Stash! *design, color, collections and quilts*.”
June 20	Jane Tenorio-Coscarelli	Workshop “Cut-away Appliqué”
July TBD	Field Trip	Downtown Fabric Shopping/Tour/Exhibition
August 14-15	Irena Blum	A workshop “Quilts of a Different Color” on Aug. 14 using colored pencils to apply color to quilted pieces. At the General Meeting on Aug. 15, Irena will present “Quilter’s Life in Whirlwind of Events.”
September 19	Larene Smith	Workshop “Jamming Jelly Sensations”
October 15-17	Mark Lipinski	Two days of workshops: “Craftsy Block Quilt” on Oct. 15, and “Lemon Cathedral Window Quilt” on Oct. 16. At the General Meeting on Oct. 17, Mark will present “The Slow Stitching Movement.”
November 7	Philanthropy Workshop	Our annual Westside Quilters philanthropy Saturday. Details to come.
December TBD	Holiday Tea	Annual event for members only. Details to come.

PROGRAM CALENDAR

September 20 Saturday	Workshop	Ann Turley	In this workshop, attendees will learn three methods that lead to a self-portrait. Use Ann's patterns as a jumping-off point, or try a woodcut style face. You will end the day with a small quilt, unique to you.
October 24 Friday	Workshop	Lisa Coulombe	Lisa Coulombe of San Diego will teach a workshop "Everyday Wearable Art and Beyond." Four different projects to choose from that include curved piecing and bias techniques on quilted jackets and tote bags.
October 25 Saturday	GENERAL MEETING	LISA COULOMBE	Lisa Coulombe will present a fast-paced fashion show of over 40 of her jackets and coats in this trunk show of her work in the field of wearable art.
			
November 8 Saturday	Workshop	Giving for Thanksgiving Philanthropy Workshop	Our annual event to make children's quilts for local charities.
December TBD		WQ Holiday Tea	Information coming soon for our Members-only event.
January 10, 2015 Saturday	Workshop	UFO Sewing Day	Bring your unfinished projects for a day of free sewing! A great way to kick off your New Year's resolutions to finish those projects. A teacher TBD will be on hand to help with any quilting or sewing questions.
February 6 Friday	Workshop	Debbie Maddy	No diamonds or Y seams makes "Labyrinth" a very easy and enjoyable quilt to make. You'll want to make all four sizes from lap to king.
			
February 7 Saturday	GENERAL MEETING	DEBBIE MADDY	Debbie Maddy will present "No Diamonds, No Y Seams/Old Quilts, New Methods." Learn about the techniques used to make these beautiful, yet simple-to-make quilts. Discussion on the history of the blocks used and the journey from the first quilt designed to the latest.
			

To Register for a Workshop:

At the **WQ website**, choose *Calendar* and scroll down to individual workshops. See the link to the Workshop Registration Form (which you can fill in on-line and then print) and the supply list. **First**, please email Programs@WestsideQuiltersLosAngeles.org of your intent to attend a workshop. **See the workshop no-refund policy (substitutions allowed) shown on the Workshop Registration Form.** WQ will hold your space at the workshop for 14 days to allow time to mail Workshop Registration Form and payment to the WQ post office box. For last-minute registrations, contact Program Chair ASAP. **Credit cards/debit cards now accepted. Note Early Registration discounts available 30 days or more before workshops.**

Quarterly Meetings:

WQ members attend at no charge. Non-members are welcome for a \$10.00 guest fee.

Meetings at St. John's Presbyterian Church, 11000 National Boulevard at Military (3 blocks East of Sepulveda), Los Angeles, 90064.

Workshops:

Fees vary. Note early registration discounts may apply. Non-members pay a \$15.00 surcharge.

Workshop locations vary. 9:30 am to 3:30 pm unless stated otherwise.



WQ Quilts at Road to California

We're on track for our WQ exhibit in the Atrium at Road to California in January. The entry form can be found on page 13 of this newsletter. Print it out from this newsletter or download it from the home page at www.WestsideQuiltersLosAngeles.org and return it to the address on the form as soon as possible. All the information is on the form. Just remember that all quilts must be at least 72" long.

Sally Wright, Road Exhibit Coordinator

TREASURER'S REPORT

Opening Balance July 25, 2014		\$7,524.06
INCOME		
Dues	\$250.00	
Workshop Fees	755.00	
Fabric Sale Fundraiser	301.00	
Amazon	22.49	
Donations	50.00	
TOTAL INCOME		1,378.49
EXPENSE		
Bookmark printing; display	(183.41)	
Workshop Expenses (Aug.)	(231.20)	
Gen. Meeting Expenses (August)	(236.20)	
Square Up Fees (cr. cards)	(12.28)	
TOTAL EXPENSE		(663.09)
Closing Balance August 31, 2014		\$8,239.46

Tina Nord



SEPTEMBER BIRTHDAYS

Dale Barnes	9/8
Virginia Marshall	9/10
Tina Nord	9/10
Suzanne Toji	9/14
Carolyn Chadwick	9/15
Nancy Sharpe	9/17
Betsy Barker	9/21
Sally Silvers	9/25

LEADERSHIP

These are exciting times for Westside Quilters!

I hope you are a sewing your philanthropy kits distributed at the August meeting from **Tanya Heldman** and **Debbie Nussbaum**. Let's get them turned in for the October meeting, or before, so we can have a very productive GIVING FOR THANKSGIVING workshop on November 8.

Thanks to so many of you for turning in your quilts at our August meeting for the "Our Quilting Heritage" exhibit at the LDS Visitor Center in West Los Angeles. Be sure to get there and see our quilts on display, now through September 18.

Are you getting your 72" long quilts ready for the ROAD TO CALIFORNIA show in January?

Now is a great time to show the wonderful work we are doing personally and for our community.

Roberta Walley

MEMBERSHIP

The newly revised Westside Quilters Membership Roster is now on the website! It represents all the results and changes from our membership renewal period. Please take a moment to check out your contact information and please let me know if there are any errors. The roster can be accessed at www.WestsideQuiltersLosAngeles.org by clicking on the Members Only tab on the top of the home page. Plug in the User Name and password that you were sent in your Membership Letter and you are there.

Sally Wright



August Fabric Giveaway Fundraiser A Huge Success!

Thanks to all our fabric donators and the members who were eager to add to their fabric collections, we raised \$301.00! A massive achievement considering the board only budgeted \$200 to add to the general fund from the event. The weather was perfect at our August meeting and made for a delightful fabric shopping experience at the outdoor tables. Perhaps this added to the sale being such a hit.

Thank you to the volunteers who helped prepare, set up, and pack, and to our members who made incoming and outgoing donations. There was some very nice fabric to choose: quilting cottons, silk, and a large amount of Tencel from a Los Angeles dressmaker. Additionally, patterns, notions and books were also part of the event. Thank you shout outs to **Aileen Cooke, Luann Jaffee, Sandy Ray, and Stephanie Wexler** for making it such a successful accomplishment.

Our
QUILTING
heritage

Please join us
for a quilting exhibition
featuring:

Santa Monica Quilt Guild
August 23 - September 4

Westside Quilters
September 6 - September 18

*African American
Quilters of Los Angeles*
September 20 - October 2

Los Angeles Temple
Visitors' Center
10777 Santa Monica Blvd,
Los Angeles, CA 90025
(310) 474-1549
[facebook.com/LATVC](https://www.facebook.com/LATVC)



Westside Quilters NOW on Display

Stop everything you are doing now and hurry over to the LDS Visitor Center and see the collection of Westside Quilters quilts now on display till September 18. It is a wonderful collection of quilts, and includes traditional, contemporary and art quilts, both large and small.

Thanks to **Perla Rothenberg** for all the hard work to coordinate our collection in the show. And to the volunteers who helped with the set up and to demonstrate sewing; they include **Perla, Roberta Walley, Sally Wright, Debbie Nussbaum, Pepper Libow, Suzanne Woods, Carol Kapuscinski, Stephanie Horsley, Lisa Drew, Ann Chach Nancy King, Sally Madigan, Madeline Ehrlich and Pat Karasick.**

NEWSLETTER

This month's survey:

Tell us about your sewing machine!

How many do you have? What is your favorite brand? Do you prefer a standard featherweight type of machine or a computerized model. Do you have different machines for different parts of the quilting process? We want to hear about it! Email Newsletter@WestsideQuiltersLosAngeles.org.

Also, don't forget to send in your news items. We want to keep up with what is happening with our members.

Lisa Redmond

PHILANTHROPY

Thank you

It is rewarding to use our talents and quilting passions to make lovely handmade quilts that will bring some cheer, some soft cuddly security and some warmth to others; this is what WQ Philanthropy is all about. Thank you to the following people for letting us know what you have done and signing the Charity Log at the WQ August meeting: **Sally Wright, Pepper Libow, Lita Greenberg, Nancy Sharpe, Perla Rothenberg, Karen Johns, Pat Karasick, Patti Post and Jeanne Kraft.** Additionally, **Sandy Abramovitz** and **Debbie Nussbaum** each made a quilt for the House Quilt Project on behalf of Furnishing Hope (Debbie's can be seen here on the right →).



3rd Annual Giving for Thanksgiving Workshop

Saturday, November 8th is the date for the free philanthropy workshop, "Giving for Thanksgiving." The workshop is from 9:30am to 3:30pm, and will be held at Westwood Presbyterian Church, 10822 Wilshire Blvd., Los Angeles 90024.

We hope you have your calendars marked! It will be a fun productive day as we assemble quilts for children. The Children's Charities we're targeting are Las Familias del Pueblo, Para Los Ninos and Saint Joseph Center. The sizes of the quilts needed by these agencies are listed on the website, but Las Familias and Para Los Ninos have families in need of children's quilts of all sizes.

Plan for the Day

We will have a station for every stage of the quilting process (cutting, piecing, quilting, ironing & binding) with greatest emphasis on simple machine quilting and binding. Thanks to everyone who picked up a pre-cut quilt top packet at our August general meeting. After stitching them up, please return them to either Tanya Heldman or Debbie Nussbaum. We will attempt to have all these tops long arm quilted prior to the workshop, leaving only binding and attaching labels at the workshop.

For those tops that we don't get a chance to long arm quilt, we will have machine quilting stations. A group can assemble and pin the tops, batting, and back; while others will use simple domestic machine quilting (think straight line quilting).

We welcome additional kid friendly fabrics and batting for the workshop, depending on supplies on hand at the start of the workshop we will start as many quilts as possible at cutting and piecing stations.

At the next WQ general meeting there will be sign-up sheets for the various workshop stations, with lists of what to bring. Please stop by the table at the Oct.25th

Additional Philanthropy Goal

WQ provides scholarships to workshops, if you know anyone not in the guild that might like or would benefit from a particular class please let us know. They can be a youngster, neighbor or teacher; it's a wonderful way to introduce people to quilting.

We truly appreciate everyone's charity efforts!

Happy stitching.....

Debbie Nussbaum and Tanya Heldman

Tips for Entering a Quilt Show



There are more than 2000 quilt shows a year in the United States, and almost every one of them sponsors a quilt contest. Adding to that, there are numerous contests sponsored by quilt guilds, quilt shops, quilt catalogs, quilting websites, and fabric manufacturers. All that totals a staggering number of opportunities to enter a quilt in a contest. The majority of these contests are very welcoming to beginning quilters. There are two types of quilt shows:

Juried - A juried show is one where you have to apply to get in, and only some of the applicants get in. These are normally larger shows, either local or national.

Non-Juried - A non-juried show is one where you bring your quilt and enter it into the show. All quilts are accepted.

Both types of shows award ribbons and/or prizes in various quilt categories. Some non-juried shows don't award ribbons or prizes. These should be considered more like exhibits. When you are looking for a contest to enter, keep these tips in mind.

Start Looking Early

When you are looking for a contest to enter, it is best to start looking early. Most major contests require that an application and photographs or slides of the quilt be submitted months before the show. It takes a significant amount of time to sew a beautiful quilt, but if you have rushed to sew on borders that end up crooked and a quilt that doesn't hang straight because you ran out of time, the quilt will quickly be rejected for poor workmanship. Give yourself enough time to comfortably finish the quilt and do the best job you possibly can. Avoid being overly optimistic about how much time it will take to finish your entry.

Do Your Research

Many casual quilt shows sponsored by quilt shops and quilt guilds do not have a size or theme requirement, making them less stressful for the novice quilter. Also, these contests usually do not require that the quilt be an original design. Quilts made from patterns or kits are welcomed. Be forewarned that most of the other contests have strict guidelines and requirements. Research the requirements for the contest you are interested in and be honest with yourself about your experience and skill level and whether you can be successful in the competition. Rejection is a confidence crusher. Beginners do frequently win quilt contests. Give yourself the best chance possible by finding a contest that is a good match for your skill and experience.

Read the Rules and Follow the Directions Exactly

The most exquisite quilt will lose if the contest directions are not followed. Contests frequently have strict size limitations that must be followed. There are almost always hanging sleeve requirements that are very exact. Quilt shows are carefully planned and the space in the exhibit room is carefully calculated. The size rules and the hanging sleeve requirements are there for a reason. Don't ignore them. Most shows also have very specific requirements for the information that must appear on the label on the back of the quilt, as well as information required for the show card that will appear beside the quilt on display. Read the rules carefully, and read the small print even more carefully.

With the tremendous number of quilt contests conducted in the United States each year, quilters of all skill levels have the opportunity to find one that will fit their experience and skill level. Do your homework and know what is expected of you when you enter a contest. Enter a contest with a theme that particularly appeals to you, making the quilt fun for you to work on. Mark all the deadlines on your calendar and start work early, giving yourself plenty of time to finish.

Whether your quilt is accepted into a juried show or you enter a non-juried show, enjoy the ride. It is very exciting to see your work hanging up for all to see, even more exciting to see a ribbon on it! An added bonus is that when you take your quilt home you get judges comments, which can be a big help. While some people may consider the comments as harsh feedback, others feel the comments are honest and supportive, which can lead you to becoming a better quilter.

Quilt shows, big or small, are a lovely thing. They can inspire and amaze. It's a great place to meet other quilters, learn new techniques and even buy things to make more quilts!

If you are thinking about entering a show, go for it! You have nothing to lose.

Upcoming Quilt Show Competitions

Now that you're inspired to enter a quilt into a competition, here are a few upcoming shows and listings below. Simple Google searches turn up more than can be listed.

Road to California — It's not too late for the January show as the deadline is October 1, 2014. The info can be found here:
<http://www.road2ca.com/img/2015img/2015-contenst-entry.pdf>

AQS QuiltWeek — The American Quilting Society has six shows from Albuquerque to Des Moines, with the mother of all at Paducah in the middle. This lists all the information with deadlines for their 2015 shows:
<http://www.quiltweek.com/wp-content/uploads/2015-Contest-Rules.pdf>

New Quilts from an Old Favorite — This annual competition at The National Quilt Museum has a November 1 deadline. The theme for 2015 is "Nine Patch," with the quilt being an interpretation of a nine patch.
http://www.quiltmuseum.org/documents/NQOF_2015.pdf

2015 Hoffman Challenge — Lots of time on this one for the Orange County fabric manufacturer, the deadline is July 17, 2015.
<http://www.hoffmanfabrics.com/content/content-article.asp?ArticleID=149>

Quilt Expo — You have till June for the 2015 show! <http://wiqultexpo.com/quiltcontest>

QuiltCon — Are you a member of the Modern Quilt Guild? You have till November 30 to enter for the February 2015 show.
<http://www.quiltcon.com/quilt-show/how-to-enter/>

ArtCall — This website mostly lists Art Quilt/Fiber Art competitions, but there are others. A great resource.
<http://artcallforentries.com/>

SPECIAL CALL FOR ENTRIES:

Exhibition of African Folk & Fiber Art at Road to California Quilt Show

Winter will mark the largest exhibit of African Folklore Embroidery fiber and quilting art that California has ever seen.

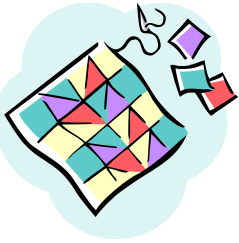
You are invited to submit your completed African Folklore Embroidery pieces for exhibit at Road to California.

The exhibition curated by fiber artist, teacher and author, Leora Raikin, will feature the completed work comprising African folklore Embroidery pieces made into quilts, books, wall hangings, pillows, table runners, bags and wearable art.

The exhibit, with over \$500 in cash prizes, is in its fifth year. The challenge is open to all; rules of the challenge are at www.afl embroidery.com

Deadline for submissions: December 15th 2014





A NEIGHBORLY GUILD CALENDAR

SEPTEMBER

September 14-15

Conejo Valley Quilters

www.conejovalleyquilters.com

Anelie Belden

September 14 Workshop: *"Jelly Roll Split Dresden"*

September 15 Presentation: *"Dancing Dresden"*

September 16-17

South Bay Quilters Guild

www.southbayquiltersguild.org

Cathie Hoover

September 16 Presentation: *"Retrospective Trunk Show—Quilts and Garments"*

September 17 Workshop: *"Best of Machine Techniques Sampler"*

September 17

LA County Quilters Guild

www.quiltguildla.org

Joe Cunningham

Presentation: *"Men and the Art of Quiltmaking"*

Workshop: *"Rock the Block: Album Style"*

September 20

Westside Quilters

www.WestsideQuiltersLosAngeles.com

Ann Turley

Workshop: *"Making Faces, Too"*

OCTOBER

October 1

Santa Monica Quilt Guild

www.santamonicaquiltguild.org

Jean Impey

Presentation: *"Finding Your Passion and Running with It"*

October 8 & 11

Glendale Quilt Guild

www.glendalequiltguild.org

Norah McMeeking

October 8 Presentation: *"Bella Bella Mosaics"*

October 11 Workshop: *"Stacked and Stacked Some More"*

October 9 & 11

Quilters by the Sea

www.quiltersbythesea.com

Cindy Myers

October 9 Presentation: *"Trunk Show"*

October 11 Workshop: *"Weeping Willow"*

October 12-13

San Fernando Valley Quilt Association

www.sfvqa.net

Terry Waldron

October 12 Workshop: *"Scavenger Hunt"*

October 13 Presentation: *"You Too Are an Artist"*

October 14-15

Orange County Quilters Guild

www.orangecountyquiltersguild.com

Cindy Myers

October 14 Presentation: *"Trunk Show"*

October 15 Workshop: *"Cappuccino Party for 4: Bali Pops"*

October 15-16

LA County Quilters Guild

www.quiltguildla.org

Lolita Newman

October 15 Presentation: *"Freedom Gone"*

October 16 Workshop: *"September"*

October 20

Conejo Valley Quilters

www.conejovalleyquilters.com

Sue Nickels

Presentation: *"Machine Quilting for Today's Quilts"*

Workshop: *"Machine Quilting Essentials"*

October 21-22

South Bay Quilters Guild

www.southbayquiltersguild.org

Grace Errea

October 21 Presentation: *"The Value of 'Value'"*

October 22 Workshop: *"Heat-Set' Machine Appliqué"*

October 24-25

Westside Quilters

www.WestsideQuiltersLosAngeles.com

Lisa Coulombe

October 24 Workshop: *"Everyday Wearable Art and Beyond"*

October 25 Presentation: *"Fashion Show/Trunk Show"*

Visit the Event Calendar of the Southern California Council of Quilt Guilds for additional events www.sccqg.org

OUT AND ABOUT

- ✂ **Now through October 2 — Our Quilting Heritage** at the LDS Visitors' Center. A quilting exhibition featuring Westside Quilters (Sept. 6-18) and African American Quilters of Los Angeles. www.facebook.com/LATVC
- ✂ **Now through November 23 — Quilt National** The Oceanside Museum of Art is presenting their second exhibition of Quilt National, a biennial juried exhibition of international fiber art organized by the Dairy Barns Arts Center in Athens, Ohio. Tues.-Sat. 10-4, Sun. 1-4 www.oma-online.org
- ✂ **Now through December 7 — Bearing Witness: Embroidery as History in Post-Apartheid South Africa** UCLA Fowler Museum, free admission www.fowler.ucla.edu
- ✂ **Now through December 14 — Yards of Style, African-Print Cloths of Ghana** UCLA Fowler Museum, free admission www.fowler.ucla.edu
- ✂ **Now through January 4 Textiles of Timor, Island in the Woven Sea** UCLA Fowler Museum, free admission www.fowler.ucla.edu
- ✂ **THIS SATURDAY September 13 — “Shop Hop”** The Valley Quiltmakers Guild and San Fernando Quilt Association are showing appreciation and saying thank you to local quilt shops for being there for all our quilting needs. Participating shops include Quilter's Studio (Newbury Park), Cotton & Chocolate Quilt Co. (Thousand Oaks), Quilty Pleasures (Simi Valley), Quilt Emporium (Woodland Hills), Candy's Quiltworks (Northridge), Quilt'n Things (Montrose) and New Moon Textiles (Pasadena). www.valleyquiltmakersguild.org and www.sfvqa.net
- ✂ **September 20-21 — Harvest of Colors Quilt Show** at Earl Warren Showgrounds in Santa Barbara. Over 200 traditional and art quilts, demonstrations and merchant mall. Saturday and Sunday, 10-5, Weekend Pass pre-sale \$8, at door \$10. www.coastalquilters.org
- ✂ **October 2-4 — Quiltfest Oasis** in Palm Springs at the Palm Springs Convention Center. This new show by Mancuso Show Management will have over 500 Quilts and Works of Fiber Art on display, feature a Merchants Mall, workshops and lectures, and much more! www.quiltfest.com
- ✂ **October 4 — 16th Annual Old Town Temecula Outdoor Quilt Show** presented by Valley of the Mist Quilters Guild 10-4 www.valleyofthemistquilters.com
- ✂ **October 4-5 — Trip Around the World Quilt Show** presented by the Simi Valley Quilt Guild. Quilts galore, boutique, vendors, professional appraisals, free parking. Saturday 10-5, Sunday 10-4, admission \$8. www.simivalleyquiltguild.org
- ✂ **October 4-18 — Los Angeles Modern Quilt Guild Exhibit** presented by the LAMQG. A show featuring member quilts. Coagula Curatorial Gallery, 974 Chung King Road, Los Angeles, CA 90012. Free. <http://lamodernquiltguild.com/>
- ✂ **October 10-11 — A Grove of Quilts** presented by the Orange Grove Quilters Guild in Garden Grove. Friday 12-5, Saturday 9-4, admission \$8, children 5-12 \$3, under 5 free. www.quiltguildla.org
- ✂ **October 10-12 — Craft & Sewing Festival** in Pomona at the Fairplex. A variety of Sewing, Quilting, Needle-Art and Craft supply vendors. Ability to participate in one or more of the many “Make and Take” workshops or FREE educational seminars. FREE admission all three days. www.quiltcraftsew.com
- ✂ **October 16-19 — Pacific International Quilt Festival XXIII** in Santa Clara at the Santa Clara Convention Center. A spectacular collection of over 800 quilts and works of wearable art at the largest quilt show on the West Coast. A wide array of over 60 workshops and lectures by world-renowned instructors, and 300 booth merchants. <http://www.quiltfest.com/activities.asp?id=7>
- ✂ **October 17-18 — Quilt Show, America Quilts** presented by Los Angeles County Quilters Guild in Long Beach. Friday 9-5, Saturday 9-3, admission \$10, pre-sale \$7. www.orangegrovequiltersguild.com
- ✂ **November 1-29 — Mapping Out: Cartographic Quilts** A group show of “Quilts on the Wall” Textile Artists and Ellen November, Fiber Artist. Opening Reception Sat. Nov. 8, 2:30-5:00 p.m. Malaga Cove Library, First Level Art Gallery, 2400 Via Campesina, Palos Verdes Estates, 90274. Call for info: 310-384-6912
- ✂ **January 22-25, 2015 — Road to California** at Ontario Convention Center, Classes now open for registration! www.road2ca.com

If you know of events, sales, new stores or anything else that should be included on this page, please send to Newsletter@WestsideQuiltersLosAngeles.org

WESTSIDE QUILTERS QUARTERLY GENERAL MEETING - AUGUST 16, 2014

The general meeting of Westside Quilters (WQ) was held on August 16, 2014 at St. John's Presbyterian Church.

Introductory Remarks: President Perla Rothenberg brought the meeting to order at 10.00 am welcoming everyone to the first meeting of the new fiscal year. Guests and new members in attendance were introduced. Perla reminded members of the collection of quilts for the LDS Visitor Center Exhibit and the fabric giveaway.

Minutes: A motion to pass the minutes of the May 3, 2014 meeting was made by Perla and seconded by Madeline Ehrlich.

Guild Business:

Treasurer: The current bank balance is \$8041.40 per Tina Nord. Membership donations have exceeded projections. The donations made at the Fabric Giveaway will go to the Guild's general fund not specifically philanthropy as stated in the newsletter.

Membership: Sally Wright reported that there are currently 81 members. Eight new and one returning members have signed up since May – Dale Barnes, Stephania Bommarito, Ann Chach, Carolyn Chadwick, Karynn Ditmar, Lee Gelfond, Erica Lewis, Kathryn Pellman, and Florann Ramsay. The new roster will be sent out next week. Members have, or will receive cards to bring guests to a meeting for free for introduction to WQ.

Philanthropy: Tanya Heldman and Debbie Nussbaum talked about the November 8th philanthropy workshop. It will focus on quilts for children's charities. Pre-cut kits were available to take home, sew, quilt if possible, and return to Debbie or Tanya, or to the next meeting. Batting and backs were requested. We will be binding the quilts at the workshop and assembling quilts. Tina Nord, Lisa Redmond, Tanya and Debbie were thanked for cutting kits.

Workshops: Stephanie Horsley welcomed Laurel Anderson and thanked her for the great workshop that had taken place on Friday. Stephanie reported that there is one spot available for the Ann Turley "Making Faces" workshop. Early registration for October's Lisa Coulombe Wearable Art workshop will open on September 1. Each member was given a bookmark listing workshops for 2015 and sign ups for all the workshops will be available at the October Quarterly meeting.

Showcase Speaker: Sally Wright talked about Quilts on the Wall, a group of Southern California art quilters and fiber artists. Meetings are held the second Saturday of every other month in Seal Beach. Members share and critique work, discuss new techniques, have occasional workshops and organize exhibits. Sally showed a selection of beautiful quilts from a collection that will be featured at the Mancuso show in Palm Springs– Oct 2-4. WQ members Sally Silvers and Sherry Kleinman are also members of Quilts on the Wall. WQ members are encouraged to attend a meeting to see if they are interested in joining this very welcoming group. The next meeting is Saturday September 13th.

Show and Tell:

Evi Newman - "My Blue & White Passion" applique. Nancy Sharpe - "Hawaiian Stars". Dale Barnes - workshop technique – wonky stars. Karen Johnson - "Kauai Calling". Jennie Kraft - 4 quilts "Colors of Provence". Maureen Gardner - SMQG "awful fabric challenge" and "Dreaming of Africa". Phyllis Gordon - "Winding Ways" and "Lone Star". Sally Wright - "Blue Delft" and "Channeling Maria Sybilla" inspired by the Jane Sassaman workshop. Prima Casetta - "Basket Quilt". Sally Silvers – water soluble pastels art quilt. Pepper Libow - "Twister Pumpkin". Lita Greeberg - "My Garden" and a child's charity quilt. Pat Karasick - disappearing nine patch baby quilt using Maui fabrics. Suzanne Woods - charity quilt using black & bright blue fabrics. Sandra Lauterbach showed Gigi Part II, which is being shown at the TAG gallery at Bergamont Station and "Am I Camouflaged?" which will be shown in Palm Springs. Nancy King showed a 30s fan quilt that belongs to a friend.

Perla asked if there are WQ members available to sew, mingle, and answer questions at the LDS Visitors Center exhibit September 6th through 18th. Fridays and Saturdays are the most visited days and members were asked to email if they are available on these days. SMQG are holding their Sept 3rd meeting there, admission is free.

A roll of batiks from the Hoffman fabrics visit was given away –Maureen Gardner was the lucky member with an "x" under her chair.

Featured Speaker:

The meeting was turned over to Stephanie Horsley who introduced our featured speaker, Laurel Anderson. Laurel is an award winning textile artist, pattern designer, author and the owner of Whisper Color, an online quilt shop. Laurel presented her lecture "Laurel's Search for the Perfect Applique". Laurel has been quilting for 20 years and has been sewing for as long as she can remember, inspired by her mother and grandmothers. She talked about beginning quilting when she worked as a nurse in the PICU, making 8" square flannel backed quilts for babies. Laurel talked about some of the books and other quilters that have inspired her, including Phil Beaver and Jackie Robinson. She took us on a journey through her quilting life showing us many of her beautiful quilts.

Perla thanked Laurel and the meeting was adjourned at 12.15.

Submitted by
Lisa Drew, Secretary.



Road to California Atrium Exhibit January 2014 Entry Form

Westside Quilters has been selected to show quilts in the annual Quilt Guild Exhibit quilts in the atrium of the Ontario Convention Center during Road to California January 22-25, 2015. We need 35 quilts all of which are at least 72" long. Width can vary and is not critical. The quilts are hung from the upper level and provide a wonderful view as you enter the Convention Center.

All quilts must have a 4" hanging sleeve attached and each quilt needs to be labeled with the Quilter's name and Phone number. Please put the labels on the top right hand side (on the back of the quilt) near the sleeve. The Road to California organizers encourage you to name your quilts, it makes for a more interesting exhibit. All quilt tops must have been made by a WQ Member. There is no "Made after" date requirement. All quilt styles are welcome!

All the entry forms must be returned by **November 1**, but we don't need the actual quilts until January 10th. Get your entries in early – If we receive more entries than the 35 we need, there will be some very informal jury process to provide the best and most varied showcase of our talented WQ Members. Earlier entries may get priority. Please include a photo (at least 4" X 6") of each quilt along with your entry form. Photos can just be a snapshot – they are for our use only and will not be published. Each quilt requires its own separate form.

Please fill out the following completely. Some of the information will be used by Road to California for signs which will hang with your quilt. Questions? Contact Sally Wright below.

First Name	
Last Name	
Email Address	
Telephone Number	
Title of Quilt	
Made By:	
Quilted By:	
Dimensions:	
Height (must be 72" +)	
Width	
4" hanging sleeve attached ?	
ID Label attached?	

Return your completed forms and photos by mail, fax or email to:

Sally Wright Email Sally@sallywrightquilts.com

415 S. Bentley Avenue

Los Angeles, CA 90049

Tel. 310-471-6034 Fax # 310-440-9069

Next Executive Board Meeting

The next meeting of the Executive Board will be held September 27.
All members of Westside Quilters are welcome to attend with prior notice to
Pres@WestsideQuiltersLosAngeles.org.

Our Mission

A new kind of guild organized for educational and charitable purposes; to promote cooperation and the exchange of ideas among quilters; to instruct members in methods and techniques of traditional and contemporary creative quilting; to serve mini-groups and their philanthropic endeavors within the community; to inspire personal achievement.

Officer

President	Perla Rothenberg
Vice President	Roberta Walley
Secretary	Lisa Drew
Acting Treasurer	Tina Nord
Program	Stephanie Horsley
Membership	Sally Wright
Newsletter	Lisa Redmond
Philanthropy Co-Chairs	Debbie Nussbaum and Tanya Heldman
Website Manager	Sally Wright

Appointed Positions

Hospitality	Sally Madigan and Bobbi Leung
Meeting Set-Up/Take-Down	Stephanie Wexler and Ann Chach
Photographer	Tanya Heldman
President Emeritus	Tina Nord

Mailing Address Post Office Box 641925
Los Angeles, CA 90064

F.E.I.N. 27-3145733
(Federal Employer Identification Number)

Website www.WestsideQuiltersLosAngeles.org

Facebook We're on Facebook. Check out the banner on the WQ website home page (lower center).

Amazon There is a boxed message in the lower center of our website home page giving a direct link to Amazon. By using this link, anything you purchase earns a 4% "dividend" paid directly to WQ. *This only works if you enter the Amazon website from the WQ website link.*

iGive.com This is another way to benefit WQ when shopping on the Internet. Here you need to register (the iGive.com logo appears in the lower center on the WQ website home page and links you directly to iGive.com). More than 800 Internet retailers participate (Barnes & Noble, Bed Bath & Beyond, Enterprise Rent-A-Car, Lancome -- to name a few). Follow the instructions at iGive.com.

Non-Profit Status Westside Quilters is tax-exempt from Federal income tax under section 501(c)(3) of the Internal Revenue Code, and classified as a public charity under section 170 of the Code, according to the determination letter dated May 26, 2011 received from the Internal Revenue Service. The effective date of exemption is June 17, 2010. Donations to **Westside Quilters** are fully tax-deductible for individuals and other entities such as corporations, partnerships, trusts; **Westside Quilters** is qualified to accept tax deductible bequests and gifts or transfers of gifts.