



PRESIDENT'S MESSAGE

A Four-Year Anniversary

Westside Quilters is 4 years old. We originally estimated a thriving membership of 60 or 70. Now we have 96.

This guild was conceived a little differently than most guilds. We have 4 big meetings a year – on Saturday mornings in a mini-conference format – rather than the usual monthly meetings. We have a workshop or other event almost monthly. Programs are varied, hoping to capture the imagination of all members some of the time. We promised *not* to have a quilt show. Our officers are allowed to serve only two consecutive 1-year terms in one position; this allows a wide participation of members and avoids 'the same old crew' always in charge.

The continuation of our non-profit status depends on our educational and philanthropy efforts. One way we provide educational benefit is to have a scholarship student at each of our workshops. This isn't always a gift to a beginning quilter or someone who can't afford the workshop fee. It also can be a reward for service -- making philanthropy quilts, teaching new quilters, assisting in the management of the guild. Or teachers in general.

Unlike most guilds, we usually don't sponsor specific philanthropy projects. We know most of our members donate charity quilts to various organizations and we share this information with our members. We provide information about what various organizations are looking for in donated quilts. In 4 years, our members have donated over 500 quilts.

Our Executive Board is now composed of quilters I didn't know four years ago. Perfect! With thanks to all our members for their support of Westside Quilters,

Tina Nord, President 2012-2014

HOSPITALITY...Nancy Sharpe coordinates our bountiful snack and coffee table at each meeting. If you can bring fruit, sweet or savory snacks, please let Nancy know at: Hospitality@WestsideQuiltersLosAngeles.org

PROGRAMS & WORKSHOPS

Madeline Ehrlich & Marianne Simpson, Co-Chairs



We're proud to present quilt artist, fabric designer, author and award winner, **Jane Sassaman** at our May 3rd General Meeting and 2 day workshop. She teaches her students how to use contrasting colors and shapes to create a personally designed art quilt. (Her Sunday, May 4-Monday, May 5 workshop is sold out!!)

Our showcase speaker will be Nina from Nina's Quilt Barn a local retail store in Redondo Beach. Nina will share her love of quilting and classes she offers in her store. There will be bundles of fabrics and other quilt store goodies for sale at the May 3 meeting.

Workshop registrations are now open for Saturday, June 21: Pat Blair "Painting on Fabric with Inks" and also Friday, July 18: Hoffman Fabrics Tour. You may sign up via email to reserve your spot or sign up at the May 3 General Meeting.

Our April workshop was great! So many beautiful hand dyed fabrics were created! Andi Perejda was a wonderful teacher and the students had a fun time learning how to create their own special, one of a kind fabric. Our scholarship student, a high school senior, shared with us her experience with photos and a small article in this month's newsletter.

If you have any questions or suggestions you'd like to share, please contact us through our website. We encourage you to share your opinions and thoughts about our programs and workshops.



DIRECTIONS FOR ST. JOHN'S PRESBYTERIAN CHURCH IN WEST LOS ANGELES

St. John's Presbyterian Church
 11000 National Boulevard
 Los Angeles, CA 90064

Our quarterly meetings are held at St. John's Presbyterian Church in West Los Angeles. Many Los Angeles residents know St. John's because of the Moreton fig tree facing National Boulevard. It is so large you sometimes forget it is a tree!

St. John's Presbyterian is located 3 blocks east of Sepulveda Boulevard on the south side of the street between Tilden and Military. (There is a traffic signal at Military.) There are 150 parking spaces in the parking lot in the rear. We meet in Fellowship Hall which is on your left as you leave the parking lot. There are no steps from the parking lot to the entrance to the Fellowship Hall.

Saturday, May 3, 2014

9:30 am	<u>Demonstration</u> Pepper Libow: "Anita's Arrowhead" block design by Anita Solomon. From simple Idea to tricky finish. <u>Registration</u> Members pick up badges Sign up for June workshop and July Hoffman Fabric Field Trip Annual membership renewals open
10:00 am	<u>Guild Business and Announcements</u> Election of Officers for 2014/2015
10:15 am	<u>Showcase Speaker</u> Nina Anderson of Nina's Quilt Barn Redondo Beach quilt shop, featuring modern to traditional fabric. Known for wide variety of patterns, innovative classes, and kits. Bringing kits and patterns to sell.
10:30 am	<u>Break</u>
10:55 am	<u>Show & Tell</u> WQ Members
11:15 am	<u>Speaker</u> Jane Sassaman "Under the Influence" Illinois-based quilt, fabric and pattern designer discusses the visual and philosophical ideas which influenced her. A very colorful experience intended to inspire you.
12:15pm	Adjournment



Sunday/Monday, May 4 & 5 – 9:30 am-3:30 pm

WORKSHOP: Jane Sassaman: “Abstracting from Nature”

Location: TBA
(Overland Avenue Side, behind the Food Court)
\$165 base fee.

N.B. This workshop is sold out—Waitlist only



Saturday, June 21, 2014 – 9:30 am-3:30 pm

Workshop: Patt Blair: “Painting Fabrics with Inks”

Paint a landscape, still life, or animal using Tsukineko Fabric Inks and special stick applicators. Bring your own artwork or choose from Pat’s drawings. You’ll love these inks. They are surprisingly easy to use. It’s like crayons for grownups!
Registration Fee: \$65, \$60 if registered before May 21

Westwood Presbyterian Church
10822 Wilshire Boulevard, Los



UPCOMING PROGRAMS

Workshops open for registration: Sunday/Monday, May 4-5 for Jane Sassaman (waitlist only), Saturday June 21 for Patt Blair. Plus sign Ups for Hoffman Fabrics field trip on Friday, July 18.

To Register:

At the **WQ website**; choose *Calendar* and scroll down to individual workshops. See the link to the Workshop Registration Form (which you can fill in on-line and then print) and the supply list.

First, please email Programs@WestsideQuiltersLosAngeles.org of your intent to attend a workshop.

See the workshop no-refund policy (substitutions allowed) shown on the Workshop Registration Form.

WQ will hold your space at the workshop for **14 days** to allow time to mail Workshop Registration Form and payment to the WQ post office box. For last-minute registrations, contact Program Co-Chairs. **Credit cards/debit cards now accepted.** *Note Early Registration discounts available 30 days or more before workshops.*

Quarterly Meetings: WQ members attend at no charge. Non-members are welcome for a \$10.00 guest fee.

Meetings at St. John's Presbyterian Church, 11000 National Boulevard at Military (3 blocks East of Sepulveda), Los Angeles, CA 90064.

Workshops: Fees vary. Note early registration discounts may apply. Non-members pay a \$15.00 surcharge.

Workshops are held at St. Andrew's Lutheran Church or Westwood Presbyterian Church, from 9:30 am to 3:30 pm.

<p>May 3 Saturday</p>	<p>GENERAL MEETING</p> 	<p>JANE SASSAMAN</p>	<p>"Under the Influence" Illinois-based quilt, fabric and pattern designer discusses the visual and philosophical ideas which influenced her. A very colorful experience intended to inspire you.</p>
<p>May 4 – 5 Sunday and Monday</p>	<p>Workshop</p>	<p>Jane Sassaman</p>	<p>2-Day Workshop - "Abstracting from Nature" Sunday and Monday. Examine a wide variety of artists' interpretations of nature. Experiment with abstraction and exaggeration to capture the essence of your favorite flora and achieve dramatic visual effects. Translate these ideas into fabric. SOLD OUT/Wait List Only. Fee: \$165</p>
<p>June 21 Saturday</p>	<p>Workshop</p>	<p>Patt Blair</p>	<p>"Painting Fabrics with Inks." In this workshop students will use pigment inks made by Tsukineko of Japan. Paint a landscape, still life or animal using Tsukineko Fabric Inks. \$65, \$60 before May 21</p>
<p>July 18 Friday</p>	<p>Field Trip and Tour of Hoffman Fabrics in Mission Viejo—90 minute tour</p>		<p>WQ hosts a field trip to Hoffman Fabrics in Mission Viejo. FREE to WQ members. 90-minute tour begins at 10:00 am; members to create own carpools. Please e-mail Programs@WestsideQuiltersLosAngeles.org and indicate the names in your group. Tour is limited to WQ members.</p>
<p>August 15 Friday</p>	<p>Workshop</p>	<p>Laurel Anderson</p>	<p>"Wild Roses Appliqué" In this workshop, participants will test multiple fusible products and try a variety of methods for fusing as well as explore edge stitching techniques and decide on their favorite fusible product. Registration opens in mid-June.</p>
<p>August 16 Saturday</p>	<p>GENERAL MEETING</p> 	<p>LAUREL ANDERSON</p>	<p>"Laurel's Search for the Perfect Appliqué." An award winning quilter from Carmichael, CA, Laurel will spin a tale of her journey into the world of appliqué.</p>
<p>September 20 Saturday</p>	<p>Workshop</p>	<p>Ann Turley</p>	<p>Ann Turley will present a fun workshop "Making Faces."</p>
<p>October 24 Friday</p>	<p>Workshop</p>	<p>Lisa Coulombe</p>	<p>Lisa Coulombe of San Diego will teach a workshop on jackets and totes.</p>
<p>October 15 Saturday</p>	<p>GENERAL MEETING</p> 	<p>LISA COULOMBE</p>	<p>"Lisa Coulombe will present a fashion show of her wearable art creations.</p>

LEADERSHIP

Roberta Walley, Vice President

It is with great pride that we announce the new leadership of Westside Quilters for 2014-2015. Our organization will continue in the footsteps of our founding and former leaders. Westside Quilters is a relatively new guild with a wonderful reputation for educational lectures, workshops, and philanthropic activities.

Our strong capable leaders make the job of filling their shoes a challenge. It was important to us, the nominating committee, Tanya Heldman, Debbie Nussbaum, Sally Madigan and myself, Roberta Walley to find new board members who will put their personalities, abilities, and innovations into Westside Quilters. There is still a need for a Program Co-Chair to work with Stephanie Horsley. If you are interested and willing, please let me know at Vice President@WestsideQuiltersLosAngeles.org.

Thanks to Debbie Nussbaum and Tanya Heldman for staying on for another year in their very successful jobs as Philanthropy chairs....well done!

And great big THANKS to Nancy Sharpe and her crew for her job of making our meeting so hospitable.

I think we have done our job.
So many of you were honored and pleased to serve as officers and board members.
Here are the nominees for the executive board for 2014/2015:

President- Perla Rothenberg
Vice President- Roberta Walley
Program Co-Chairs- Stephanie Horsley and _____
Secretary- Lisa Drew
Treasurer- Sandy Abramovitz
Membership-Sally Wright
Newsletter- Lisa Redmond
Philanthropy Co-Chairs: Tanya Heldman and Debbie Nussbaum
Website Manager: Sally Wright

A Note of Thanks from Brittnay Smith

My name is Brittnay Smith and I'm both a senior and three year member of Culver City High School's Academy of Visual and Performing Arts (Visual Arts Department). During one of the events hosted by our academy entitled 'Show Your Process', I had the pleasure of meeting Madeline Ehrlich, who briefly discussed with me the existence of her quilt guild, Westside Quilters; and showed great enthusiasm in regard to introducing students to the art of quilting. Subsequent to the event, I followed up with Mrs. Ehrlich and asked if I could participate in any workshops hosted by the guild. Not only did she recommend me as a candidate to receive a scholarship to participate in an upcoming workshop, but she invited me to attend the Glendale Quilt Show with her. I had never attended a quilt show before and it was such an amazing experience! There were a wide range of quilts on display at the show ranging from traditional and uniform ones, to ones that were more contemporary and artistic. All preconceived notions I had about quilting were thrown away as I was continuously blown away by all the talent the show had to offer.



Not long after I had attended the quilt show, I received an e-mail from Madeline stating that I had won the scholarship. I was awarded the opportunity to take part in a shibori dyeing workshop on the 12th of April taught by Andi Perejda. I was really impressed by all the lovely women in the workshop and their willingness to help teach me. I learned so much, and I definitely intend to continue practicing shibori dyeing at home. The workshop was so much fun and I am so grateful I got to partake in the experience!

All the lovely women at Westside Quilters, and my new encounters with quilting and shibori dyeing have instilled within me an even greater love for the textile arts. I have become so increasingly enthralled with textiles that I recently purchased my very first sewing machine! After high school I plan to attend a four year university, where I'll be able to gain a greater understanding of the visual arts, with a focus in the fiber arts, fashion design, and illustration.



Hello Westside Quilters,are you looking for a project or considering making a quilt to donate? Here are two outstanding organizations you might consider quilting for: **The House Quilt Project** or the **YMCA Transitional Housing and Education Program**. The philanthropy section of the QW website lists many other organizations with quilt requirement descriptions to also consider.

Featured this month:

THE HOUSE QUILT PROJECT

Furnishing Hope, a non-profit organization that provides the interior décor/furniture for Habitat for Humanity Wounded Warrior Battalion from Orange County to San Diego. This is an ongoing project that furnishes four homes a month for wounded US Soldiers coming back from Iraq and Afghanistan.

Quilt Guidelines provided by Furnishing Hope:

Size: 12" wide by 16" high in vertical format.

Materials and Quilting : Up to you! Any fabrics or composition, but must contain an image of a house and an American Flag. Also two pop tops sewn on the top back for easy hanging. Some great ideas for quilt designs and completed quilts are posted on www.thehousequiltproject.blogspot.com

Label: All quilts must contain a label that is sewn onto the back by hand with text provided [here](#)

Delivery: Share finished project at WQ Quarterly Meetings and deliver or mail to Jamie Fingal. Contact her at Jamie.Fingal@gmail.com for mailing information.



YWCA TRANSITIONAL HOUSING AND EDUCATION PROGRAM

www.smywca.org/womens-girls-programs/transitional-housing.html

The Santa Monica/Westside YWCA provides a Transitional Housing and Education Program for eight (8) young woman, between the ages of 18 and 22 years, who are former foster youth. They are provided with a home, food, social support and services for up to two and a half years while they attend school full-time, work part-time, save for their future and attend life skills classes.

Quilt Guidelines:

Size: To fit a single or twin bed (mattress size 40" x 75")

Materials: Washable materials

Design: Suitable for young Adult Female

Quilting: Machine quilting, hand quilted or tying accepted.

Label: Appropriate label containing quilter's name, date made and an expression of a successful transition to Independence.

Delivery WQ requests that the quilts be brought to WQ Quarterly Meetings for "Show and Tell". WSQ will coordinate delivery of the quilts to Sharrie Wunder, Housing Director, Santa Monica/Westside YWCA

I'm personally feeling inspired to create a quilt for The House Quilt Project, hope others join me. I would be fun to see the variety and creativity that our member can display at Show & Tell for our August Westside Quilters General Meeting. Three months' time should be plenty!

Happy stitching...Debbie Nussbaum

MEMBERSHIP

Sally Wright, Membership Chair

The new fiscal and Membership year - it begins on June 1- so it's time to renew your membership this month! An updated 2014-15 Membership form is attached as a separate pdf document along with the newsletter as well as on the home page and the Membership page of the WQ website at www.WestsideQuiltersLosAngeles.org. You can pay by check or credit card. Mail it to the WQ address on the form or bring it to the May 3 General Meeting. You can also remind your quilting friends that they can join now and take advantage of a full year of WQ events, meetings and workshops from the beginning of the WQ year!

Sally Wright, Membership Chair



Renew
Your Membership

THE TREASURER'S REPORT

April 2014

THE TREASURER'S REPORT

Opening Balance March 16, 2014		\$7,843.79
INCOME		
Dues	\$30	
Workshops	(\$240.87)	
TOTAL INCOME		(\$210.87)
EXPENSE		
Meeting Expense	(\$747.00)	
Meeting Lights	(\$94.75)	
Workshop expenses	(\$2,507.27)	
TOTAL EXPENSES		(\$3,349.02)
Closing Balance April 22, 2014		\$4,283.90

Aileen Cooke, Treasurer

A tough look at the accounts this month with minus income—several refunds for the May workshop. Under workshop expenses are the charges for Perejda and Sassaman, thus 2 workshops or 3 days of teacher expenses are included. This should be the bulk of the expenses and is a low point of the year for finances.



Margaret Russell	5/05
Pam Overton	5/13
Sue Correll	5/19
Vicki Ebin	5/20
Vicki Fisher-Lerer	5/22
Christine Chambers	5/29
Madhu Mandavia	5/29
Tanya Heldman	5/30

PROPOSED 2014-15 WQ BUDGET

It is always difficult to estimate expenses for the final six weeks of our fiscal year, which ends May 31. We have an early May meeting this year to accommodate a major speaker.

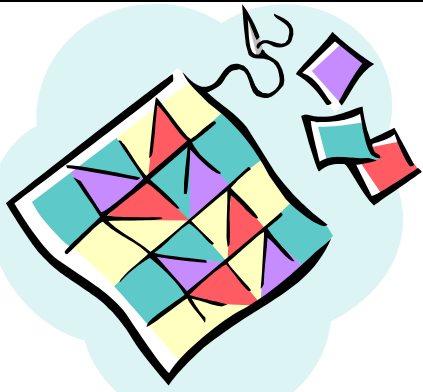
The proposed budget on the next page shows we will have slightly under our estimated income (\$14,788) but also slightly under our expenses (\$15,352). This brings us to a loss of the year of \$564 rather than the loss of \$980 originally projected. We took in significantly more donations (\$1,295 vs. \$700 expected) and this made a huge difference in our year. Our program expenses were under estimates. All in all, we had a very successful year and we are projecting an even better new year—only a slight loss of \$64.

Aileen Cooke, Treasurer

WESTSIDE QUILTERS Proposed 2014/2015 Budget

04/22/2014

	<i>Actual FYE 05/31/2013</i>	<i>BUDGET FYE 05/31/2014</i>	<i>Actual FYE 05/31/2014</i>	<i>BUDGET FYE 05/31/2015</i>
INCOME				
Membership Dues	(81) \$4,050	(95) \$4,750	(96) \$4,597	(100) \$5,000
Workshop/Event Fees	(9) \$4770	(10) 8,800	(9) \$8,396	(9) \$8,200
Guests (@ \$10 Qtrly. Mtgs.)	80	200	150	150
Donations (General)	141	700	1,295	1,100
Donations (Holiday Tea)	375	400	250	300
Fundraiser Profit	456	0	0	0
Fabric Sale Aug 2014			0	200
Amazon/IGive Receipts	210	240	100	100
TOTAL INCOME	\$10,151	\$15,090	\$14,788	\$15,050
EXPENSES				
Administration	166	100	70	100
Charitable Contributions	1050	500	500	500
Holiday Tea Char. Contrbtn.	500	500	500	500
Legal & Government Fees	20	20	0	20
Meeting Equipment	135	150	292	150
Post Office Box Rental	120	120	124	124
Printing/Promotion	42	0	0	0
SCCQG Dues & Insurance	275	310	335	350
Tax Returns/Consulting	300	300	0	300
Website	220	220	220	220
Square Fees	19	50	70	50
Mileage Reimb.	206	150	0	50
Philanthropy	142	50	300	50
Program Expense:				
Quarterly Meetings	(4) 3,025	(4) 3550	(4) 3342	(4) 3,200
Workshops/Events	(9) 7,076	(10) 10,050	(9) 9,599	(9) 9,500
TOTAL EXPENSES	\$13,297	\$16,070	\$15,352	\$15,114
PROFIT/LOSS	(\$3,146)	(\$980)	(\$564)	(\$64)



A NEIGHBORLY QUILT CALENDAR

MAY	
May 3 & May 4-5 Westside Quilters	Jane Sassaman May 3 Presentation <i>"Under the Influence"</i> May 4-5 Workshop (Sold Out): <i>"Abstracting from nature"</i>
May 7 Santa Monica	To Be Announced
May 11-12 San Fernando Valley	Sandy Turner May 11 Workshop: <i>"Around the Twist"</i> May 12 Presentation: <i>"Simple Steps to a Sensational Border"</i>
May 14 & 17 Glendale	Jennifer Rapacki May 14 Presentation: <i>"Creativity Unleashed-Modern Technology for Quilters"</i> May 17 Workshop: <i>"Photoshop Elements/Pixelate"</i>
May 20-21 South Bay	Joy Lily May 20 Presentation: <i>"How to be a Carefree Quilter"</i> May 21 Workshop: <i>"Mitrations"</i>
JUNE	
June 4 Santa Monica	Nancy Ota June 4 Presentation: <i>"Trunk and Textile Show"</i>
June 11 & 14 Glendale	Diane Steele June 11 Presentation: <i>"Group Quilts, Round Robins, Block Exchanges and Challenges"</i> June 14 Workshop: <i>"Woven Silhouettes"</i>
June 21 Westside Quilters	Pat Blair June 21 Workshop: "Painting Fabrics with Inks"
JULY	
July 9 & 12 Glendale	Wendy Mathson July 9 Presentation: <i>TBA</i> July 12 Workshop: <i>"Storm at Sea"</i>
July 13-14 San Fernando Valley	Sharon Schamber July 13 Workshop: <i>"Machine Quilting, Basic Feathers, Corners, Borders & Blocks"</i> July 14 Presentation: <i>"My Quilting Journey"</i>
July 18 Westside Quilters	Field Trip and Tour of Hoffman Fabrics, Mission Viejo

Visit the Event Calendar for the Southern California Council of Quilt Guilds: www.sccqg.org

OUT AND ABOUT

- May 17-18, 2014—Antelope Valley Quilt Association Annual Quilt Show. General Admission \$7.00 for both days. Antelope Valley Fairgrounds, 2551 W. Avenue H, Lancaster CA. For more information: www.avqa.org
- June 7-8, 2014— Beach Cities Quilters Guild, “FantaSea of Quilts” Quilt Show. General Admission: \$9.00. Soka University Gymnasium, 1 University Drive, Aliso Viejo, CA. Quilts, garments, dolls and merchant mall. For more information: www.beachcitiesquiltersguild.org.
- June 29, 2014—Jennifer Chiaverini, author of the Elm Creek Quilts book series, has announced on her facebook page a return visit to Southern California (she lives in Wisconsin). She will be at the Grant R. Brimhall Library in Thousand Oaks, 1401 E. Janss Road, Thousand Oaks on Sunday, June 29, 2014 at 2pm. Bestselling author and former Thousand Oaks resident Jennifer Chiaverini will discuss her latest books set during the Civil War—*Mrs. Lincoln’s Rival*, *The Spymistress*, and *Mrs. Lincoln’s Dressmaker*. Copies of her books will be for sale which she will sign for patrons. A civil War display will be available for viewing as well. This is a City of Thousand Oaks 50th Anniversary program.
- August 14-16, 2014 --Quilt! Knit! Stitch! Debut Show....Will feature exhibitors, classes and art displays that spotlight not only quilting, but related needle arts such as knitting, sewing, crocheting, mixed media and more. Oregon Convention Center, Portland, Oregon

WESTSIDE QUILTERS EXECUTIVE BOARD MEETING
March 15, 2014

President Tina Nord called the meeting to order at 10:15 a.m. The meeting of the Executive Board of Westside Quilters ("WQ") was held at the home of Sally Wright in Westwood. Officers attending: Aileen Cooke, Vicki Ebin, Madeline Ehrlich, Tanya Heldman, Tina Nord, Debbie Nussbaum, Marianne Simpson, Roberta Walley, and Sally Wright. Stephanie Wexler attended as a guest.

The motion to approve the minutes of three Executive Board meetings, September 28, 2013, November 8, 2013, and January 18, 2014, was made, seconded and approved.

Tina expressed intent to invite the new president of the Los Angeles Modern Quilt Guild to WQ's May quarterly meeting. She mentioned that officers not standing for re-election should begin preparing their officer-holder's notebooks to pass along to new officers. St. John's Presbyterian Church, our host for quarterly meetings, has plans to redecorate the Fellowship Hall; in the meantime, the Board agreed to purchase three standing photo lamps at a cost of \$100 to aid in the lighting problems of the meeting room.

It was proposed by Tina that a new appointed position of President Emeritus be created. The immediate past president, the "President Emeritus", would be appointed by the current president to be a non-voting member of the Board for a one-year term. The Board agreed and a motion will be presented for a vote by the general membership on May 3. Also, a motion is needed on May 3 to authorize Sally Wright to continue as Website Manager beyond the maximum two one-year terms.

Vice President Roberta Walley will be unable to attend the next quarterly meeting of the Southern California Quilter Guilds (SCCQG), which is the annual Meet the Teachers meeting in Carson. Aileen Cooke and several other WQ members will be present.

The annual Nominating Committee was formed with Vice President Roberta Walley as Chairman, and Tanya Heldman, Sally Madigan, and Debbie Nussbaum the other Board representatives. Two additional committee members will be solicited from the general membership. The Nominating Committee is charged with selecting the officer slate for the 2014/2015 fiscal year. The slate is to be presented to membership before May 1 and voted on at the May 3 quarterly meeting.

Membership Chair Sally Wright said that WQ has 3 new members to make a total of 96.

Treasurer Aileen Cooke reported a cash balance of \$7,843 as of March 15. She noted that WQ has paid venue expenses in advance although upcoming April and May workshop teacher fees and year-end expenses will reduce the balance before the May 31 fiscal year-end. The subject of whether WQ or individual members pay for the Square credit card fees in cases of cancellation was discussed. Sally stated that Square reversed the fees when original charges were reversed. Aileen will be working on the 2014/2015 budget for review in April by the Board.

The deadline for the April newsletter is March 25. Several WQ members have asked if they can submit small articles for the newsletter in order to try to sell equipment or machines. The Board agreed that this type of information could best be communicated to members in email blasts.

Philanthropy Co-Chairs Tanya Heldman and Debbie Nussbaum talked about the long-arm quilting of charity quilts at Sewing Arts. They will ask WQ members to volunteer to do bindings. They are in the process of updating the Philanthropy section of the WQ website, including information about saving

fabric/batting/threads to make dog pillows. Madeline Ehrlich recommended a Culver City High School arts student to be the scholarship student for the April Peredja workshop.

Program Co-Chairs Madeline Ehrlich and Marianne Simpson gave updates on the April and May workshop registrations. It was requested that we emphasize members email Programs initially to begin the registration process according to the instructions on the workshop registration form. Madeline updated the Board on speaker/teacher contracts through October. Sally Wright suggested Quilts on the Wall as the August Showcase speaker.

Due to logistical problems and mediocre interest, the guild will not host quilting retreat fundraisers. At previous Board meetings, the possibility of printing a program flyer was discussed at a cost up to \$250. Due to the lack of fundraiser income and a tight budget, it was decided not to produce such a flyer at this time.

The ongoing subject of WQ publicity was discussed. Tina said that she had been advised by a public relations professional that WQ needed a story to publicize, such as charity work or the unique background of an individual member. It was suggested that Philanthropy try to coordinate the delivery of charity quilts with media in the near future.

Roberta Walley viewed a video presentation of local quilter Kathryn Small's body of work. She suggested WQ might be able to show this video at a future quarterly meeting. Roberta will check with the Small family.

At the February quarterly meeting, the guild provided a table for fabric giveaways. The advisability of continuing this feature was discussed by the Board. Logistical problems were reviewed: Cleanliness of fabric; type of fabric; free or for-sale fabric; what to do with leftover fabric. The consensus was that the guild would have a fabric sale once a year at the August meeting when tables might be set up outdoors. Other guidelines: only clean cotton fabric, voluntary donations but not priced fabric. Aileen Cooke volunteered to collect and sort the fabric with the help of her minigroup.

The guild 2013/2014 budget allows for \$500 in cash donations. Early this year \$300 was donated to St. Andrew's Lutheran Church. The Board voted to donate the balance of \$200 to School on Wheels (SchoolOnWheels.org), a non-profit organization dedicated to enhancing education opportunities for homeless children in the Los Angeles area.

The next meeting of WQ's Executive Board is set for Saturday, April 26, at 10:00 a.m. at Sally Wright's home.

The meeting adjourned at 12:30 p.m.

Respectfully submitted,

Tina Nord for Sally Madigan, Secretary

Next Executive Board Meeting:

The next meeting of the Executive Board will be held May 31.

All members of Westside Quilters are welcome to attend with prior notice to

Pres@WestsideQuiltersLosAngeles.org.

Our Mission

A new kind of guild organized for educational and charitable purposes; to promote cooperation and the exchange of ideas among quilters; to instruct members in methods and techniques of traditional and contemporary creative quilting; to serve mini-groups and their philanthropic endeavors within the community; to inspire personal achievement.

Officers

President	Tina Nord
Vice President	Roberta Walley
Secretary	Sally Madigan
Treasurer	Aileen Cooke
Program Co-Chairs	Madeline Ehrlich and Marianne Simpson
Membership Chair	Sally Wright
Newsletter Co-Chairs	Veronica Gray and Vicki Ebin
Philanthropy Co-Chairs	Debbie Nussbaum and Tanya Heldman
Website Manager	Sally Wright

Appointed Positions

Nancy Sharpe	Hospitality
Stephanie Wexler	Meeting Set-Up
Tanya Heldman	Photographer

Mailing Address

Post Office Box 641925
Los Angeles, CA 90064

F.E.I.N. 27-3145733
(Federal Employer Identification Number)

Website www.WestsideQuiltersLosAngeles.org

Facebook We're on Facebook. Check out the banner on the WQ website home page (lower center).

Amazon There is a boxed message in the lower center of our website home page giving a direct link to Amazon. By using this link, anything you purchase earns a 4% "dividend" paid directly to WQ. *This only works if you enter the Amazon website from the WQ website link.*

IGive.com This is another way to benefit WQ when shopping on the Internet. Here you need to register (the IGive.com logo appears in the lower center on the WQ website home page and links you directly to IGive.com). Over 800 Internet retailers participate (Barnes & Noble, Bed Bath & beyond, Enterprise Rent-A-Car, Lancome to name a few). Follow the instructions at IGive.com.

Non-Profit Status Westside Quilters is tax-exempt from Federal income tax under section 501(c)(3) of the Internal Revenue Code, and classified as a public charity under section 170 of the Code, according to the determination letter dated May 26, 2011 received from the Internal Revenue Service. The effective date of exemption is June 17, 2010. Donations to **Westside Quilters** are fully tax-deductible for individuals and other entities such as corporations, partnerships, trusts; **Westside Quilters** is qualified to accept tax deductible bequests and gifts or transfers of gifts.