



## MESSAGE FROM OUR NEW PRESIDENT

**TINA NORD**

This is a new chair for me, and I'm appreciative of the faith of the membership in selecting me to follow Sally Wright. Metaphorically speaking, she left big shoes to fill.

In my first forum, I want to express heartfelt thanks to our Program chairs, past and present.

Recently I have experienced the sometimes tortuous and comic road to securing signed contracts with lecturers and workshop teachers.

There's the individual who suddenly stops responding to calls and emails. Or the demanding speaker, like the rock groups who don't want brown M&Ms. Negotiations may begin with enthusiasm but sometimes result in a "thanks for no thanks."

**Westside Quilters** is building a reputation for hospitality. We are known as a guild of talented quilters eager to learn. Our Program chairs act on member suggestions and seek out the unusual and new. They initiate dialog with far-distant quilters to take advantage of travel opportunities. (We are also lucky that several of our WQ members graciously offer their homes to visiting lecturers and teachers.) It is sometimes a sensitive balancing act to feature various quilting interests, to work within a budget, to respond to quilters who wish to appear before WQ but who are not especially suitable, and to maintain happy relationships.

Our Guild's success is attributable in large part to these hard-working Program chairs: **Rosemary Dresser** in our first year, and **Roberta Walley** and **Amy Barer** in our second. **Roberta** and **Sharon Whelan** continue into our third year.

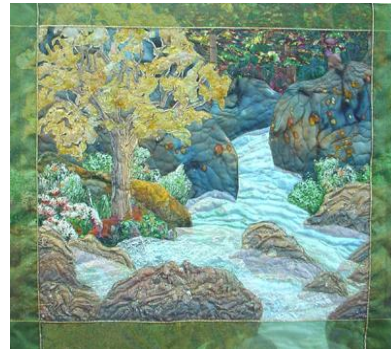
Take a look at the lineup for the membership year ahead: **Linda Schmidt, Judy Sisneros, Pat Rollie, Julie Silber, Sylvia Davis, Lenore Crawford, Don Beld, and Pam Holland.** Plus 2 innovative Philanthropy classes, some retail shopping therapy, and a few surprises yet to be sprung. Come along for the ride!

June 23 Workshop

**LINDA SCHMIDT**

*Elements in Fabric – Earth, Wind, Fire & Water*

Emphasizing "Earth" with surface design techniques in a small landscape project.



*"How do you create the four Elements in fabric?"*

*How do you make Earth, Wind, Fire and Water so vivid they leap off the surface?*

*In this class, you will gain a greater understanding of my infamous Down and Dirty Design Principles as you work with a wide variety of techniques and products to thoroughly explore the possibilities open to us today."*

This quote from Linda Schmidt's description of her workshop should whet your appetite for finding out more! Her original techniques have earned her great acclaim as a textile artist, quilter and designer.

This WQ workshop gives us a unique opportunity to learn her surface design techniques first hand. Here's an opportunity to learn more than a dozen techniques without investing a great deal of money to try each one. As Aileen Cooke says "classes prove to be great friend-makers. The Westside Pavilion is a convenient location, parking is included with the class cost, and there are great teachers in our Program List. I'm taking Linda's workshop--perhaps I'll see you there!"

This is an expert you don't want to miss!

## MEMBERSHIP RENEWAL TIME

2 Years Old and Growing!

**Westside Quilters** begins our *third* year! Renewal memberships are due now through July. New members always are welcome!

We try to make it easy for you.... Go to our website (see above) and click on "Membership" on the top menu line.

Scoot to the bottom of this page and click on the Membership Form.

You can fill in the form on-line and print, or print first and write in the information.

(The privacy code isn't necessary to reach this website section.)



### LINDA S. SCHMIDT

Saturday, June 23  
Workshop: “Elements in Fabric – Earth, Wind, Fire and Water”

Linda Schmidt describes herself: “I come from a long line of quilting women and started my first quilt when I was 8 years old, and have made hundreds of quilts since then, having won over 250 ribbons at quilting exhibitions.”

In addition to teaching quilting for 10 years, Schmidt has been a member of the Alameda County Art Commission (6 years) and Chairman (2 years). She is an active member of Amador Valley Quilters (Pleasanton CA).

Schmidt has “4 part-time paying jobs, 3 children, 1 husband, a 5-bedroom house that I clean myself, 2 flutes, 2 guitars, a piano, and a B.A. in French that has suddenly ceased to be totally useless.” She writes poetry and is learning sign language. And quilts.

For the WQ workshop, Schmidt will teach a multitude of surface design techniques in a small landscape project. Here’s an opportunity to learn more than dozen techniques without investing a great deal of money to try each one. This is an expert you don’t want to miss!



### JUDY SISNEROS

Friday, August 10  
Workshop: “Circle Pizzazz”

Saturday, August 11  
Lecture: “Stitches of Hope – Cambodia”

Judy Sisneros says her goal as a teacher is to have each student go away happy – with a unique quilt. Not a copy of Sisneros’s own quilts.

Sisneros has been quilting since 1987 (teaching since 1993) and sewing for many years before that. She has cornered the market on “pizzazz” with her best-selling books, including *9-Patch Pizzazz*, *Rectangle Pizzazz*, and the new *Circle Pizzazz*. Her workshop for WQ is taken from her newest book. She also has developed acrylic templates to go with this book (available for purchase at the workshop and lecture).

“I love teaching and traveling, and as a single woman I have the freedom to pursue both with gusto. My quilts are made and quilted mostly by machine – I’m a ‘pedal to the metal’ kind of quilter – although I have discovered the joys of ‘quilting by checkbook.’ Sisneros lives near Sacramento.

Sisneros’ lecture will explain her work with Cambodian girls rescued from the sex slave trade and her continuing efforts to spread quilting and sewing in this part of the world.



### PAT ROLLIE

Saturday, September 22

Workshop: “Free Motion Thread Design”

Pat Rollie has been quilting for over 20 years and has completed the Fine Art and Surface/Textile Design Certificate programs at Otis School of Art & Design in Los Angeles. She received her first national recognition from *McCalls Quilting Magazine’s* competition in 1990 and has continued to be recognized throughout the country for her work.

For instance, her quilt “Begonias at Butchart Gardens” won 1<sup>st</sup> Place Art Pictorial at the 2011 Road to California, was published in “The Quilter Magazine (January 2010) and was exhibited at NQA Ohio, IQA Houston, MQX East and AQS Lancaster.

Rollie uses thread and quilting designs to create texture, depth and contour. She brings her enthusiasm to teach to all of her classes. Her goal is for each student to leave the classroom feeling brave, excited and moving one step closer to becoming a more accomplished quilter.

Rollie lives in Los Angeles and is a member of the Glendale Qjilt Guild and SAQA among others

# PROGRAMS

CO-CHAIRS: *Roberta Walley and Sharon Whelan*

## Workshops now open for registration:

**Linda Schmidt** - June 23. **Judy Sisneros** – August 10. **Pat Rollie** – September 22.

### To Register:

Go to the **WQ website**; choose *Calendar* and scroll down to see the link to the Workshop Registration Form (which you can fill in on-line) and the supply list. **See the workshop no-refund policy (substitutions allowed) shown on the Workshop Registration Form. For last-minute registrations, contact the Program Co-Chairs.** WQ will hold your space at the workshop for **14 days** to give you time to mail in your check and Workshop Registration Form to the WQ post office box. **For last-minute registrations, contact the Program Co-Chairs.**

### WQ Meeting and Workshop locations and costs:

Quarterly meetings: WQ members attend at no charge. Non-members are welcome for a \$10.00 guest fee.

Workshops: fees vary. Non-members pay a \$15.00 surcharge. Workshops are held at the Westside Pavilion Community Room B (Pico & Westwood Boulevards); parking fees are included in the workshop registration fee. Supply lists are on WQ website.

**June 23, 2012**

Saturday

Workshop: **Linda Schmidt** – “*Elements in Fabric – Earth, Wind, Fire & Water*”

Emphasizing “Earth” with surface design techniques in small landscape project.

Registration is open. Materials fee of \$20 collected in class.

Members \$60; non-members \$75. Fee includes parking.

**August 10, 2012**

Friday

Workshop: **Judy Sisneros** - “*Circle Pizzazz*”

Updating the ‘snake trail’ block to make it all new again. You’ll like circles.

Registration is open. See website, JudySisneros.com.

\$18 template fee also required; some homework before class

Members \$60; non-members \$75. Fee includes parking



**August 11, 2012**

Saturday

**JUDY SISNEROS** at General Meeting, 9:30 am to 12:30 pm

Lecture: “*Stitches of Hope – Cambodia*”

**September 22, 2012**

Saturday

Workshop: **Pat Rollie** – “*Free Motion Thread Design*”

Create contrast, contours and texture using free motion thread designing.

Registration is open. See website, SoFineArtWorks.com.


Members \$50; non-members \$65. Fee includes parking.

FUTURE WQ PROGRAMS: SAVE THE DATES!

2012

<b>October 13</b> Saturday	General Meeting	<b>JULIE SILBER</b>	Respected quilt authority offers perspective on quilt collecting and history See blog: <a href="http://TheQuiltComplex.com">TheQuiltComplex.com</a> .
		<b>The Batty Lady</b>	Vendor booth
<b>November 10</b> Saturday	Workshop	<b>Philanthropy</b>	"Giving for Thanksgiving" Heart appliqué pillow project for breast cancer oncology charities
<b>December</b>	Holiday Event		<b>Second Annual Member Holiday Tea</b>

2013

<b>January</b>	Workshop	<b>Sylvia Davis</b>	<i>Another dynamic design by WQ member Sylvia Davis</i>
<b>February 8</b> Friday	Workshop 	<b>Lenore Crawford</b>	<i>Fusing and Fabric Painting</i> Famed Michigan quilter on design and fuse technique (no sewing in class). Make patterns from photos, add fabric painting for detail and depth. See website <a href="http://lenorecrawford.com">lenorecrawford.com</a> .
<b>February 9</b> Saturday	General Meeting	<b>LENORE CRAWFORD</b>	<i>Award Winning Techniques for Fusing Fabrics</i>
<b>March 9</b>	Workshop	<b>Don Beld</b>	<i>Potholder Blocks for Charity Quilts</i> Each block is quilted and bound, then assembled into a large quilt. Special philanthropic event
<b>June 7 &amp; 8</b>	Workshop and Lecture	<b>PAM HOLLAND</b>	<i>Australian super-quilter</i>
<b>August</b>	Workshop and Lecture	<b>SHARON SCHAMBER</b>	<i>Multiple National Awards Recipient</i>

**THANK YOU TO OUR MAY SPEAKERS!**

Thank you to everyone for welcoming our May General meeting guests, **Sally Collins** and **Lauren Hawley**.

Many thanks too, to **Carole Gentile** for her fun demonstration of twisted log cabin and to all members who brought their "Favorite Tools" to share.

The ever popular **Sally Collins** shared her intricate techniques for precise piecing in our workshop, and overwhelmed us with her beautiful award winning quilts. We saw several examples of small blocks from participants at Show and Tell!

We were SEW happy to introduce **Lauren Hawley** as a speaker. Many of you know her from her **SEW MODERN** store at 10921 West Pico. The story of her journey into fabric and the world of modern quilting was fascinating!



## MEMBERSHIP

*Luanne Jaffe*

### 2012-2013 is looking good!

We ended our fiscal year May 31 with 90 members, and to date we have 35 renewing members plus 8 new members.

Our dynamic guild has a host of hard working members planning great events for the upcoming year. See the schedule of events on the Programs page for a list of great speakers and workshops.

**However, PLEASE remember that we need you to renew your membership! Completed forms and checks must be returned by July 31st in order for you to remain a continuing member.**

You can access the membership form on our WQ website. Please return your completed form, with check, to our P.O.Box designated on the application.

As a paid new or renewing WQ member, you will receive your monthly newsletter, attend quarterly meetings at no charge, register for workshops at the member rate, receive the monthly newsletter, and receive guild discounts at several neighborhood retailers."

***We need all of you to keep our group going strong!***

### Welcome to New WQ Members!

***Pat Bryan, Penni Chirchik, Lisa Drew, Laureen Hawley, Carol Kapuscinski, Erica Lewis, Elaine Widawer, Sue Woods!***

### Introducing New WQ Mini-groups!

We have news that at least one new mini-group has formed as a result of the WQ tea, hosted in March by **Luanne**, that introduced, to each other members looking to form a group.

This new group brings together 4 quilters from the Westside and 4 quilters from the South Bay areas. We look forward to hearing how this new group gets organized.

Please let us know if you have joined with other members to form a group. We want to keep track of your news!

## WQ Members Who Are Special!



### Happy Birthday to You!

- June 1 Jessica LaMar
- June 3 Sherry Kleinman, Anita Withrington
- June 5 Karen Johnson
- June 11 Daisy Marks, Millicent Milo
- June 12 Phyllis Gordon
- June 16 Maureen Gardner, Bobbi Leung
- June 21 Aileen Cooke
- June 24 Laurie Pincus
- June 25 Roberta Walley

### Many congratulations to these WQ members!

**Stephanie Horsley's** quilt, "Square Dance", has been accepted for hanging in Sisters 37th Annual Outdoor Quilt Show in Sisters, Oregon. The show is July 14th, and worth the trip. Website:

<http://www.sistersoutdoorquiltshow.org>

**Sherry Kleinman** and **Sandra Lauterbach** are exhibitors with **Quilts On The Wall** at the Santa Monica Art Studios Hangar Gallery, 3026 Airport Ave., Santa Monica 90405. The exhibit is open Wednesday through Saturday from noon to 6:00 p.m. through June 16th. Website:

<http://quiltsonthewall.com>

**Sally Wright's** quilt "Stairway to Heaven" was honored as Quilt of the Month in the July/August issue of "Machine Quilts Unlimited eNews." Website: [www.mqumqg.com](http://www.mqumqg.com)

## PHILANTHROPY/EDUCATION

# Remember to Renew Your Membership Now!

Westside Quilters' members have produced, or participated in, an incredible 155 items and other philanthropic activities over the past year!

These projects and activities include:

Seventy regular sized quilts, 26 pillowcases, 22 baby quilts 3 purses, 8 lap quilts, 18 bibs, 2 quilts long-arm quilted, and 5 quilting sessions for kids.

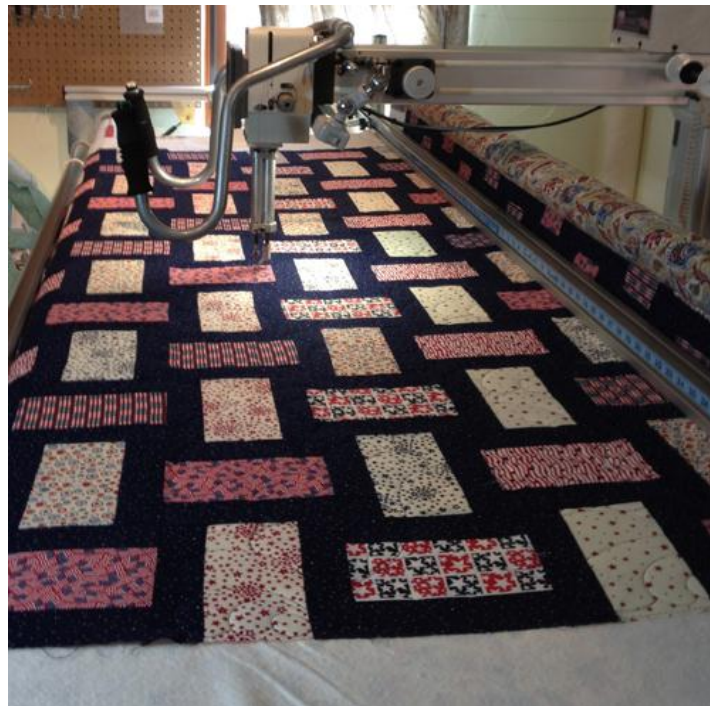
**A BIG THANK YOU to all participating WQ Members. I**

We were able to make donations to the following charities:

- Quilts for Wounded Warriors
- One Million Pillowcase Challenge
- Foster Care Children
- YWCA Housing and Education Program
- Quilts from the Heart
- Project Linus
- Advocators for Language Learning
- Ventura County Shelters
- Rio Adult Day Care
- USMC Baby Shower Project
- Quilts for Japan
- Pat of Love Project
- Valley Q40 Project
- Kids Connected
- Stitches For the Heart
- PATH
- Jenesse Cancer Center
- Cancer Support Center
- Mychal's Learning Center
- Ronald McDonald House
- Gilchrist House
- Hamilton High School
- South Bay Quilt Guild
- House Quilt Project.

WQ Program and the Philanthropy Chairs are planning several philanthropy workshops for Spring 2013 to increase our quilting and charitable donations.

**Let's keep up the good work!**



*Wounded Warrior quilt pieced by Nancy King being quilted by Tanya Heldman*

On her Facebook page, **Tanya Heldman**, a busy WQ member who not only machine quilts for members and other customers, but also takes photographs of Guild events, members and their quilts for the Guild's web page, states:

*"I enjoy doing the charity quilts in between my paying customers. Not only is it an opportunity to give back, but it also allows me the chance to try out and practice new quilting designs and patterns. A win win for all - another quilt for charity and my skills improve to benefit my customers."*

### Workshop Scholarship

WQ offers a scholarship to each workshop for a local person.

Our Scholarship Recipient for June will be **Linda Miller**, Quilt Artist.

Please contact us to make recommendations for a scholarship candidate for any of our upcoming workshops listed on the WQ website.

You can reach me by email at [Philanthropy@WestsideQuiltersLosAngeles.org](mailto:Philanthropy@WestsideQuiltersLosAngeles.org)

## TREASURER'S REPORT

Tina Nord (Past) Treasurer

**Westside Quilters'** second fiscal year ended May 31, 2012. We are expecting a few minor adjustments before closing our books on the year so this report (see below) goes to May 30 only to allow for a final review before closing exactly at May 31.

In the July newsletter, the itemized income and expenses for the year will be provided.

I am vacating this chair after two years and the wonderful **Aileen Cooke** will be your new Treasurer.

Many thanks to all our members and the Executive Board members who were accommodating in all things financial (and other things, too).

Here's to another fabulous year!

## SOME THOUGHTS FROM OUR PAST VICE PRESIDENT

Aileen Cooke

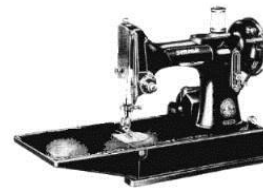
Dear Quilters,

My year as your Vice President is ending and now I will be your new Treasurer. I'm sure next year will be as exciting as this past one has been. I really enjoyed attending the quarterly **Southern California Council of Quilt Guilds'** meetings--I always learned something new, enjoyed the trip to some distant place in the district, and somehow managed to find a quilt shop on the way home!

That's what's so fun about quilting—it has many facets. We can work at home making quilts, take workshops or cruises, meet with our quilting buddies, go to a quilt show, and shop at quilt shops along the way.

There's always room for learning, which brings me to another reflection: the several classes I have taken this past year have proved to be great friend-makers. The Westside Pavilion is a convenient location, parking is included with the class cost, and there are great teachers in our Program List. I'm **taking Linda Schmidt's** workshop this month too, perhaps I'll see you there!

I'm looking forward to learning Tina's job as Treasurer, but rest assured-- she will be my tutor and consultant so nothing goes amiss!



### THE TREASURER'S REPORT

<b>Opening Balance</b> <b>May 1, 2012</b>		\$10,262.52
<b>INCOME</b>		
Amazon (May 30)	\$ 39.78	
Workshop Fees	605.00	
5/12 Guest Fees	20.00	
<b>TOTAL INCOME</b>		<b>664.78</b>
<b>EXPENSE</b>		
Charity Donations	(500.00)	
Meeting Eq. (handtruck)	(107.28)	
General Meeting 5/12:		
Sally Collins	(814.64)	
Room Rent	(75.00)	
Workshop 5/11:		
Sally Collins	(1,203.19)	
Room Rent	(110.00)	
Parking (April & June)	(120.00)	
<b>TOTAL EXPENSE</b>		<b>(2,930.11)</b>
Closing Balance May 30, 2012		\$7,997.19

## A NEIGHBORLY QUILT CALENDAR

You may be interested in attending meetings of our neighbor guilds, as we welcome quilters from other guilds. Here are the meetings, workshops and events of note through September 2012.

See also the Event Calendar at the Southern California Council of Quilt Guilds website: [www.sccqg.org](http://www.sccqg.org).

Glendale Quilt Guild	<a href="http://www.GlendaleQuiltGuild.org">www.GlendaleQuiltGuild.org</a> . Contact: <a href="mailto:Info@GlendaleQuiltGuild.org">Info@GlendaleQuiltGuild.org</a>
San Fernando Valley Quilt Association	<a href="http://www.SFVQA.org">www.SFVQA.org</a> . Contact, go to website, then Committees and link to Program
Santa Monica Quilt Guild	<a href="http://www.SantaMonicaQuiltGuild.org">www.SantaMonicaQuiltGuild.org</a> . Contact: <a href="mailto:Info@SantaMonicaQuiltGuild.org">Info@SantaMonicaQuiltGuild.org</a>
South Bay Quilters Guild	<a href="http://www.SouthBayQuiltersGuild.org">www.SouthBayQuiltersGuild.org</a> . Contact, go to website, Contact Us and link to Program VP
Valley Quiltmakers Guild	<a href="http://www.ValleyQuiltmakers.org">http://www.ValleyQuiltmakers.org</a> . Contact: <a href="mailto:VQG@ValleyQuiltmakers.org">VQG@ValleyQuiltmakers.org</a>

DATE	SPEAKER/TEACHER	GUILD
June 16	Mary Ellen Sakai Workshop <i>Quilting Charity Quilts</i>	Glendale
<b>June 23</b>	<b>Linda Schmidt Workshop</b> <b><i>Elements in Fabric – Earth, Wind, Fire &amp; Water</i></b>	<b>Westside Quilters</b>
June 30	"Celebration of the Needle" Fashion Show (Kimonos) Miyako Hybrid Hotel in Torrance Luncheon tickets for sale – see South Bay website	South Bay
July 7	Billie Lauder Workshop <i>Four Patch &amp; More</i>	Glendale
July 8	Billie Lauder Workshop <i>Diamonds Can Be a Quilter's Best Friend</i>	San Fernando
July 9	Billie Lauder <i>Quilts – You Asked For It</i>	San Fernando
July 12	Stacie Olsen TBA	Valley Quilters
July 13	Stacie Olsen Workshop <i>Tote Bag</i>	Valley Quilters
July 14	Billie Lauder <i>Quilts – You Asked For It</i>	Glendale
<b>July 27-29</b> <b>[classes before]</b>	<b>INTERNATIONAL QUILT FESTIVAL – LONG BEACH</b> <b>Long Beach Convention Center – see <a href="http://www.quilt.com">www.quilt.com</a></b>	
August 1	Lois Hallock <i>Creating Your Perfect Quilt Space</i>	Santa Monica
August 8	Jill Schumacher <i>Creating Your Heirlooms of Tomorrow</i>	Glendale
<b>August 10</b>	<b>Judy Sisneros Workshop</b> <b><i>Circle Pizazz</i></b>	<b>Westside Quilters</b>
<b>August 11</b>	<b>Judy Sisneros</b> <b><i>Stitches of Hope – Cambodia</i></b>	<b>Westside Quilters</b>
August 11	Jill Schumacher Workshop <i>Mini Whole Cloth Quilt</i>	Glendale
August 21	Mary Jo Hiney <i>Trunk Show</i>	South Bay
August 22	Mary Jo Hiney Workshop <i>Silk in a Snap</i>	South Bay
September 5	Lynn Mann: Lecture <i>Head For the Border</i>	Santa Monica
September 8	Lynn Mann: Workshop <i>Head For the Border</i>	Santa Monica
September 9	Annelie Belden: Workshop <i>Thoroughly Modern Dresden</i>	San Fernando
September 17	Annelie Belden: Lecture <i>Dresden Dance</i>	San Fernando
September 12	Mary Ellen Sakai: Trunk Show	Glendale



DATE	SPEAKER/TEACHER	GUILD
September 15	Mary Ellen Sakai <i>Quilting Charity Quilts</i>	Glendale
September 13	Peggy Martin: Lecture	Valley Quilters
September 14	Peggy Martin: Workshop <i>Palm Leaf</i>	Valley Quilters
September 18	Linda Schmidt: Trunk Show	South Bay
September 19	Linda Schmidt: Workshop <i>Creating With Cool Stuff</i>	South Bay
<b>September 22</b>	<b>Pat Rollie: Workshop</b> <b><i>Free Motion Thread Design</i></b>	<b>Westside Quilters</b>

## OUT AND ABOUT

With Sally Madigan

### LONG BEACH INTERNATIONAL QUILT FESTIVAL July 25-July 30

Not just a quilt show, but a Festival!

#### Tours

Wed, July 25<sup>th</sup>: includes the Alexander Henry facility  
Mon, July 30<sup>th</sup>, includes Hoffmann Fabrics

#### Classes

July 26 **Preview Night** for class enrollees  
*According to those who know, quilters who take a Thursday class and stay to view the exhibit(s) are the ones who get the best view of the show, and the best opportunity to shop*

Full day or ½ day classes cover all aspects of quilting as well making journals, jewelry, and doll making!

#### Vendors

More than you could ever imagine!

#### Information

Website: [www.quilts.com](http://www.quilts.com), click on Quilt Festival/Long Beach.

*Pre-enrollment is recommended; details are on page 22 of the Class Catalogue. Note that the \$35 enrollment fee includes daily admission and other cool stuff, but does not include the fee for any class you wish to take.*

*Seems like a good idea to go to the Long Beach International Quilt Festival: Will you be there?*

### ASILOMAR 2013 REGISTRATION IS OPEN

The five sessions for 2013 now are now open for registration. This is arguably the premier 5-day quilt experience.

Go to [www.emptypoolsseminars.com](http://www.emptypoolsseminars.com) for information

### KAFFE FASSETT

Remember last September? Well, Kaffe will be giving classes in the "neighborhood" this coming October.

**Carpinteria** at Roxanne's - A Wish and A Dream website  
[Roxannequilts.com](http://Roxannequilts.com)

**Encinitas** at Starry Night Hollow, website  
[www.starrynighthollow.com](http://www.starrynighthollow.com).

These are all first come, first served classes.

### SEWING CLASSES FOR KIDS AND TEENS

Check out **Sewing Arts, Tanners, New Moon, F&S, Momen +** and **Jo-Ann's** for sewing and quilting classes for children and teens.

What a great opportunity for them to have fun doing something we think is fun, too!

### SOUTHERN CALIFORNIA QUILTERS' RUN:

"IT'S A MYSTERY!"

June 14-17 and June 21-24

(In last month's Newsletter, July dates were incorrect!)

See website for map and particulars [www.quiltersrun.com](http://www.quiltersrun.com)

For enthusiastic quilters who have a hybrid or a source of inexpensive gas!



WESTSIDE QUILTERS

### **Next Executive Board Meeting**

The next meeting of the Executive Board will be held on Saturday, July 21, at 10:00 am in Westwood.

As always, the meeting is open to all members with advance notice to our president, Tina Nord. For exact meeting details, please contact Tina at [WestsideQuilters@yahoo.com](mailto:WestsideQuilters@yahoo.com).

#### **Our Mission**

A new kind of guild organized for educational and charitable purposes; to promote cooperation and the exchange of ideas among quilters; to instruct members in methods and techniques of traditional and contemporary creative quilting; to serve minigroups and their philanthropic endeavors within the community; to inspire personal achievement.

#### **Officers**

President	Tina Nord
Vice President	Sally Wright
Secretary	Brenda Gottfried
Treasurer	Aileen Cooke
Membership	Luann Jaffe
Newsletter Co-Editors	Sally Madigan Janet Thornber
Philanthropy/Education Program	Peggy Belcher-Dixon Roberta Walley Sharon Whelan
Website Manager	Sally Wright
Hospitality	Nancy Sharpe

**Mailing Address** Post Office Box 641925  
Los Angeles, CA 90064

**F.E.I.N.** 27-3145733  
(Federal Employer Identification Number)

**Website**  
[www.WestsideQuiltersLosAngeles.org](http://www.WestsideQuiltersLosAngeles.org)

**Facebook** We're on Facebook. Check out the banner on the WQ website home page (lower center).

**Amazon** There is a boxed message in the lower center of our website home page giving a direct link to Amazon. By using this link, anything you purchase earns a 4% "dividend" paid directly to WQ. *This only works if you enter the Amazon website from the WQ website link.*

**IGive.com** This is another way to benefit WQ when shopping on the Internet. Here you need to register (the IGive.com logo appears in the lower center on the WQ website home page and links you directly to IGive.com). Over 800 Internet retailers participate (Barnes & Noble, Bed Bath & beyond, Enterprise Rent-A-Car, Lancome to name a few). Follow the instructions at IGive.com.

**Non-Profit Status** Westside Quilters is tax-exempt from Federal income tax under section 501(c)(3) of the Internal Revenue Code, and classified as a public charity under section 170 of the Code, according to the determination letter dated May 26, 2011 received from the Internal Revenue Service. The effective date of exemption is June 17, 2010. Donations to **Westside Quilters** are fully tax-deductible for individuals and other entities such as corporations, partnerships, trusts; **Westside Quilters** is qualified to accept tax deductible bequests and gifts or transfers of gifts.