



## **PRESIDENT'S MESSAGE**

### **Patience is a Journey**

I recently experienced the true meaning of the word patience. I traveled by train to New Mexico to meet up with a retired quilting buddy. We then drove another six hours to Colorado to meet up with a third retired quilting buddy. Not having taken a train trip in 25 years, I found the experience to be quite a lesson on patience, both mentally and physically. Yet I enjoyed the trip despite the Amtrak problems encountered.

The Colorado buddy was my quilting teacher and mentor when I learned to quilt. (She created the quilting group I discussed last month.) After she received permission from Human Resources to hold lunchtime quilting classes, I marveled at the patience she showed when someone needed extra help understanding a technique. If she knew you sewed, then by golly she recruited you to be a quilter. If you didn't own a sewing machine or were afraid to use one, it didn't matter. She would show you how to hand sew your log cabin together (her favorite beginner's pattern). She coddled anyone who needed coddling, who in turn was surprised when they found themselves with a completed quilt top!

We all know it takes patience to quilt. A project can easily go well or it can just blow up in your face. We may find ourselves doing a lot of "unsewing" on a quilt only to have it become a UFO to be "discovered" years later. I'm sure we've all experienced at one time or another a frustrating project, workshop or shopping experience.

I put aside my fear of traveling alone and ensured I brought enough reading material/projects to be entertained. Though the train was delayed over eight hours on the way and 12 hours on the way back, I realized I had no control over delays so I allowed patience to take over. It was a fascinating experience, and I met people from all parts of the U.S.

Use patience to open your mind to new quilting techniques that might come your way. Take advantage of WQ's interesting educational speakers, workshops and excursions coming your way. Be patient and enjoy the journey.

**Perla Rothenberg**



## **Our Quilting Heritage**

Westside Quilters has a special opportunity to showcase our quilts. The LDS Visitors' Center in West LA invited area guilds to participate in an exhibition entitled "Our Quilting Heritage," with Santa Monica Quilt Guild, African American Quilt Guild and Westside Quilters accepting.

The event is scheduled from August 23 to October 2. Each guild will be showcased for a two-week period. The Westside Quilters schedule is Sept. 6-18.

All costs are being handled by the Visitors' Center. We only provide quilts and descriptions. The Visitors' Center has already created flyers (see page 12), and will also create the description cards, do the set-up and take down of the quilts (with guild supervision), provide white gloves and be responsible for security.

Quilts will be collected at our August 16 meeting and returned at our October meeting. Arrangements can be made for earlier pick up. Submission details can be found on the entry form (see page 13). Our limit is 30-35 quilts. Small quilts less than 24"x24" can be accommodated ladder style. You may submit an entry form for the two sizes but there is no guarantee that both quilts will be accepted.

We have guild members who are also members of the other two guilds. In order to display a large number of quilts, please submit a different quilt for our two-week period.

This is a great opportunity and we look forward to showcasing our various styles of quilt making.

## PROGRAMS & WORKSHOPS

Last month, members of Westside Quilters had the opportunity to participate in an enjoyable workshop with Patt Blair. Following Patt's clear and easy instructions, both in writing and in person, students were able to stretch their creative legs and learn how to recreate pictures on fabric using Tsukineko inks and paint sticks, and Fabrico markers. In class there was a variety of pictures to choose from, and some brought their own, all showing that Patt's techniques can be used on any picture imaginable. New painters were born that day!



*Class attendees gather around Patt Blair at the June workshop. →*

This month, members of the guild will venture to Mission Viejo on July 18 to visit and tour Hoffman Fabrics. During the tour they will learn about how designs screens are made, how the Hoffman Challenge is designated, the history of Hoffman fabrics and about their manufacturing process. The tour is currently full and there is a wait list.



In August we are very excited to have Bay Area textile artist Laurel Anderson leading a workshop called "How to Cheat at Applique." In class, Laurel will help you expand your applique skills, whether it be by machine or hand, and share new techniques you can use for achieving the clean, crisp look for your quilt. Each student will leave class with a reference book they will create from handouts Laurel will provide, and the techniques can be used on both modern and traditional pieces. There is a \$28 kit fee and the kit will include the patterns and notions for completing samples in class. Registration is open now. Please e-mail [Programs@WestsideQuiltersLosAngeles.org](mailto:Programs@WestsideQuiltersLosAngeles.org) to sign-up!

And don't forget to save the date for Saturday, September 20 when Ann Turley will be joining us for "Making Faces, Too!" She will teach three different methods you can use for creating your own quilted self-portrait. Registration for this workshop will open in mid-July.

Wishing you all a wonderful summer and Happy Quilting!

**Stephanie Horsley**

---

**Friday, July 18, 2014 — 10:00am**

**Field Trip: [Hoffman Fabrics](#), Mission Viejo**



Friday field trip and tour of Hoffman Fabrics - the home of those marvelous batiks - in Mission Viejo. **FREE** to WQ members. We're asking you to organize your own car pools for the approximate 75-minute drive from West Los Angeles down the 405 to Mission Viejo. Hoffman's tour begins at 10:00 AM and will last about 90 minutes. We'll provide some restaurant suggestions and a few fabric shopping sources for the afternoon. The tour is currently filled, but we are adding from a waiting list as cancellations come occur. Please email [Programs@WestsideQuiltersLosAngeles.org](mailto:Programs@WestsideQuiltersLosAngeles.org) to put your name on the list. For the moment, this tour is limited to WQ members only. If space becomes available, we may be able to open this tour to non-members. (This event is on a Friday because Hoffman Fabrics only gives their tour on weekdays.)

## **PROGRAMS & WORKSHOPS (cont.)**

**Friday, August 15, 2014 — 9:30am to 3:30pm**

### **Laurel Anderson: “How to Cheat at Appliqué”**

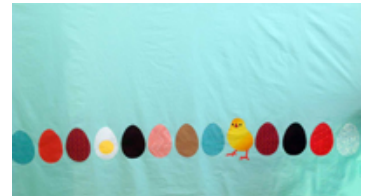


Explore the world of machine and hand appliqué techniques and find perfect methods for your creative life. Use either Laurel's modern or traditional pattern or bring your own. Come and try the world's newest products, tools and methods for appliqué and take away enough squares to start your own quilt. We fit as many different shortcuts and time saving methods into the time allotted. The class will cover template management, machine appliqué, managing fusible web, curves, points, stems and some hand appliqué techniques. Everyone loves the scallop shortcut. Decide for yourself which methods you like and stock up for your next appliqué quilt. Class includes lots of handouts -- enough for your own appliqué notebook! Questions? Contact Laurel at [Laurel@whispercolor.com](mailto:Laurel@whispercolor.com).

**Fees for members: \$55.00 (\$50 for early registration by July 15)**

**Fee for Non-Members: \$70.00**

**Kit cost: \$28.00 (pattern and notions)** not included in workshop fee payable to the instructor on day of workshop.

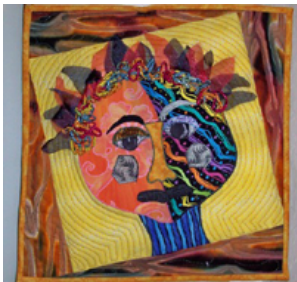


**Location: St. Andrew's Lutheran Church  
11555 National Blvd., Los Angeles, 90064**

---

**Saturday, September 20, 2014 — 9:30am to 3:30pm**

### **Ann Turley: “Making Faces, Too”**





In this class students will learn three methods that lead to a self-portrait. Use Ann's patterns as a jumping-off point, or try a woodcut-style face. Either way, you will end the day with a small quilt, unique to you. Registration opens in mid-July.

**Location: Westwood Presbyterian Church  
10822 Wilshire Boulevard Los Angeles, CA 90024**



# PROGRAM CALENDAR

<b>July 18</b> <b>Friday</b>	Field Trip and Tour of Hoffman Fabrics in Mission Viejo—90 minute tour	<b>Hoffman Fabrics</b>	WQ hosts a field trip to Hoffman Fabrics in Mission Viejo. FREE to WQ members. 90-minute tour begins at 10:00 am. TOUR IS FULL. Please e-mail <a href="mailto:Programs@WestsideQuiltersLosAngeles.org">Programs@WestsideQuiltersLosAngeles.org</a> to get on the waitlist. Tour is limited to WQ members.
<b>August 15</b> <b>Friday</b>	Workshop	<b>Laurel Anderson</b>	"How to Cheat at Appliqué" In this workshop, participants will test multiple fusible products and try a variety of methods for fusing as well as explore edge-stitching techniques and decide on their favorite fusible product. Location is St. Andrew's Lutheran Church, 11555 National Blvd., Los Angeles 90064
<b>August 16</b> <b>Saturday</b>	<b>GENERAL MEETING</b> 	<b>LAUREL ANDERSON</b>	"Laurel's Search for the Perfect Appliqué." An award winning quilter from Carmichael, CA, Laurel will spin a tale of her journey into the world of appliqué.
<b>September 20</b> <b>Saturday</b> Registration opens mid-July	Workshop	<b>Ann Turley</b>	In this workshop, attendees will learn three methods that lead to a self-portrait. Use Ann's patterns as a jumping-off point, or try a woodcut style face. You will end the day with a small quilt, unique to you.
<b>October 24</b> <b>Friday</b>	Workshop	<b>Lisa Coulombe</b>	Lisa Coulombe of San Diego will teach a workshop on pieced and quilted jackets and totes.
<b>October 25</b> <b>Saturday</b>	<b>GENERAL MEETING</b> 	<b>LISA COULOMBE</b>	"Lisa Coulombe will present a fashion show of her wearable art creations.
<b>November 8</b> <b>Saturday</b>	Workshop	<b>Giving for Thanksgiving Philanthropy Workshop</b>	Stay tuned for information about our annual Philanthropy event. We'll be making quilts for local charities. Kits to complete in advance will also be available at the August WQ General Meeting.
<b>December TBD</b>		<b>WQ Holiday Tea</b>	Information coming soon for our Members-only event.

## To Register for a Workshop:

At the **WQ website**, choose *Calendar* and scroll down to individual workshops. See the link to the Workshop Registration Form (which you can fill in on-line and then print) and the supply list. **First**, please email [Programs@WestsideQuiltersLosAngeles.org](mailto:Programs@WestsideQuiltersLosAngeles.org) of your intent to attend a workshop. **See the workshop no-refund policy (substitutions allowed) shown on the Workshop Registration Form.** WQ will hold your space at the workshop for 14 days to allow time to mail Workshop Registration Form and payment to the WQ post office box. For last-minute registrations, contact Program Chair ASAP. **Credit cards/debit cards now accepted. Note Early Registration discounts available 30 days or more before workshops.**

## Quarterly Meetings:

WQ members attend at no charge. Non-members are welcome for a \$10.00 guest fee.

**Meetings at St. John's Presbyterian Church, 11000 National Boulevard at Military (3 blocks East of Sepulveda), Los Angeles, 90064.**

## Workshops:

Fees vary. Note early registration discounts may apply. Non-members pay a \$15.00 surcharge.

**Workshop locations vary. 9:30 am to 3:30 pm unless stated otherwise.**



## MEMBERSHIP

Procrastinators Unite!

Yes, I number myself among you at times, but now it's time to put that "putting off" aside and renew your membership to Westside Quilters!

Our new membership year began on June 1 and although the renewals have been coming in, there are still some that are outstanding. (You know who you are - if not and you can't remember if you renewed or not, just email me.) Now is the time to get it together, download a Membership Renewal form from the website home page at [www.WestsideQuiltersLosAngeles.org](http://www.WestsideQuiltersLosAngeles.org), fill it out, write your check or your credit card info and send it in. You don't even need to use a stamp if you're a techie! Just fill out the form, scan it and email it to [Membership@WestsideQuiltersLosAngeles.org](mailto:Membership@WestsideQuiltersLosAngeles.org).

In a few days we will be changing the passwords for the Members only area of the website and sending the new one to renewed members only. Remember, too, that if you plan on attending the upcoming Hoffman Tour on July 18, getting the discounted Member Fee for the Laurel Anderson workshop on August 15<sup>th</sup> or entering a quilt in the Our Quilting Heritage display, you must be a member in good standing.

So please take a moment to take care of your renewal. Then sit back, relax and enjoy the fantastic programming we have in store for 2014-2015.

We have grown as well! We are happy to welcome three new members this month: **Dale Barnes** (Tarzana), **Stephanie Bommarito** (Torrance) and **Lee Gelfond** (Beverly Hills).

**Sally Wright**



## JULY BIRTHDAYS

Barbara Weigold	7/11
Clarice Evans	7/21
Judith McCormack	7/27
Sandra Abramovitz	7/28
Marianne Simpson	7/29

## LEADERSHIP

It is great to have our guild remain so strong with our newest officers at Westside Quilters. They hit the ground running in their first month! Our new leadership has been outstanding. Thanks to **Perla Rothenberg** for guiding us all. **Stephanie Horsley**, our program chair, led a very successful, well-planned and attended workshop. Thanks for the beautiful informative newsletter **Lisa Redmond** — well done.

Our continuing thanks to **Sally Wright** for the many jobs and dedicated service to Westside Quilters. **Tanya Heldman** and **Debbie Nussbaum** continue as philanthropy chairs. We are so proud of all your work making sure we continue to contribute quilts to those in need in our community. You are responsible for a lot of smiles! **Tina Nord** remains as a strong force and active President Emeritus. She is currently serving as temporary treasurer of Westside Quilters.

We need your help in finding a new permanent treasurer. We welcome any volunteers to step up!

**Roberta Walley**

Let me give you some advice: Never ask your wife, "Do you really need all that fabric?" or you'll be living out here on a rock like me.



someecards  
user card

## SURVEY QUESTION OF THE MONTH

# The Results are in — RULERS RULE!

Our first Westside Quilters Survey Question of the Month of “What is your favorite quilting notion?” was a landslide win for rulers.

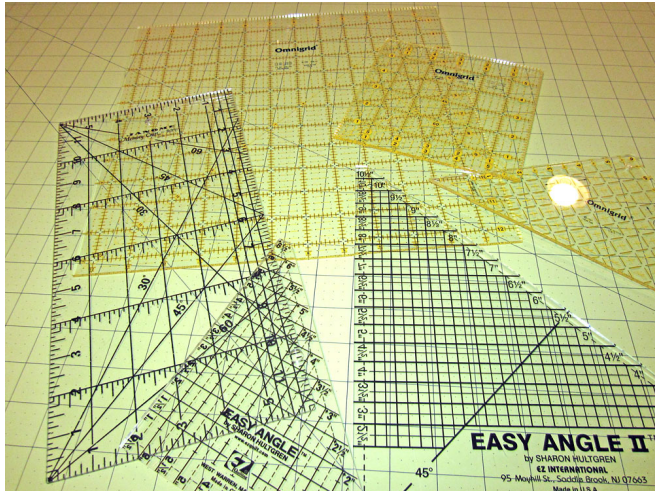


Photo courtesy of [www.sew4home.com](http://www.sew4home.com)

But before we praise the mighty ruler, let us give credit to the powerful rotary cutter. **Stephanie Wexler** was the lone dissenting opinion, instead choosing to glorify the rotary cutter. Her response: “For the precision it gives me.” As much as we overwhelmingly love rulers, I think we all have credit and agree with Stephanie.

**Sylvia Davis** was the first to respond to the survey with her confident, and brand specific, June Taylor 18” slotted ruler. I’ve never used one, but have always been fascinated watching Eleanor Burns use hers regularly on her television program “Quilt in a Day.” It makes for quick cutting work!

For me, it is my 20.5” square ruler. This behemoth ruler isn’t used daily, yet has proven a godsend. I’m forever thankful to have it. It’s especially useful in cutting and squaring large modern blocks. I hesitated a while before purchasing it, but finally splurged and now can’t live without it.

**Roberta Walley** also jumped on the ruler bandwagon. But instead of stating why she loves her ruler, she chimed in with a tip. “Sally Collins, one of our former WQ workshop teachers, and a precision sewer, suggested we sew a seam, press it and then while it is still warm from the iron and on the ironing board put your favorite ruler on top and let it cool under the weight of the ruler. Your seam will then be crisp.” I’ve since tried this tip on an obstinate seam, and it works!

**Lisa Redmond**

## PHILANTHROPY

### First and Foremost

Quilting for charitable purposes is part of the Westside Quilters mission and we wish to acknowledge and thank the WQ members who signed the Philanthropy Donation Log at our May meeting, letting us know about the quilts they made for charities or quilting tasks performed for charity. They are: **Virginia Marshall, Sandra Ray, Luann Jaffe, Maureen Gardner, Pat Karasick, Nancy Sharpe, Sherry Kleinman, Perla Rothenberg, Lisa Redmond, Pepper Libow, Debbie Nussbaum, Sally Wright, and Miriam Ulman.**

### Planning ahead - Giving for Thanksgiving Workshop

Saturday, November 8 is the date for our 3<sup>rd</sup> Annual Giving for Thanksgiving Philanthropy Workshop. We will make quilts for local charities. We hope to maximize our productivity at the workshop by starting the day off with quilts at all stages of assembly. Prior to the workshop, we hope to get quilts assembled and quilted, so binders at the workshop can get right to work. In order to have quilts ready for binding, we’ll need your help providing tops to the WQ gals that use the long arm machine monthly at Sewing Arts Center. Also, **Tanya Heldman** will be available to quilt charity quilts prior to the November workshop. If WQ members are able to give us charity tops, we’re requesting that you also provide backs and batting for those quilts. The quilt backs and batting should be 5 inches longer and wider tall around the top for long arm quilting. However, if you’re only able to provide a top, we’ll work with that as well.

As part of the prep work, we’ll bring pre-cut kits to our August meeting for members to take home and assemble. The kits will be very simple, but will contain attractive and coordinating fabrics. Additionally, we are looking for donations of fabrics appropriate for charity quilts, especially kid friendly fabrics.

At the November Workshop, we will also cut and piece tops, have all important ironing/pressing stations, simple machine quilting stations, and binding assembly and sewing stations, all working together to make our time at the Workshop as productive and fun as possible.

### Lastly

✂ Check out the WQ website under Philanthropy for organizations that would love handmade quilts.

✂ Anyone working on “The House Quilt Project” quilt?

✂ If you have a charity quilt top that is ready for quilting, please email [Philanthropy@WestsideQuiltersLosAngeles.org](mailto:Philanthropy@WestsideQuiltersLosAngeles.org)

Happy stitching...

**Debbie Nussbaum and Tanya Heldman**





Photo credit: [www.gregorycase.com](http://www.gregorycase.com) via [www.road2cablog.com](http://www.road2cablog.com)

## Road to California Atrium Display

I hope all of you are checking out your stash of completed quilts for Westside Quilters' display in the atrium of the Ontario Convention Center during [Road to California](#) in January 2015.

Or maybe you are making a new one! There is plenty of time!

Remember that the only requirement is that they be at least 72" long. Width doesn't matter. We'll be sending out entry forms in the fall. Keep sewing!

**Sally Wright**

## AUGUST FABRIC GIVEAWAY

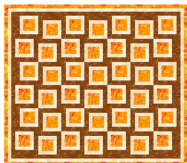
Are you clearing out your sewing room yet?

Don't forget that at our August 16 meeting we will have a fabric "share-in." If you have clean cotton fabric that you no longer love, bring it to the meeting. There will also be donations from a manufacturer and a large collector. The share-in will be open to all guild members and paid guests wearing a nametag. You can help by bringing fabric and/or taking fabric. We'll have suggested donation amounts but no prices. If you want to drop off fabric early, you may contact WQ member **Aileen Cooke** who is coordinating this summer fundraiser for the guild.



## LINKS FOR LEARNING

Westside Quilters is at its heart a philanthropic organization. Quilters are generous people by nature but our busy lives often get in the way of charity quilt making. Here's some links featuring beautiful, yet quick and easy, tutorials to help you get a quilt made fast.



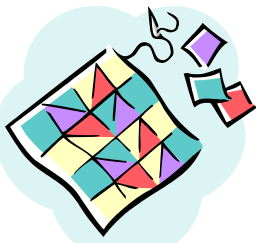
<http://cadouri-din-inima.blogspot.com/2009/04/quick-and-easy-quilt-tutorial.html>



<http://kelbysews.blogspot.com.au/2013/11/the-crossing-easy-quilt-tutorial.html>



<http://quackadoodlequilt.blogspot.com.au/2012/03/ziggy-quilt-tutorial.html>



# A NEIGHBORLY GUILD CALENDAR

<b>JULY</b>	
July 13-14 <b>San Fernando Valley Quilt Association</b> <a href="http://www.sfvqa.net">www.sfvqa.net</a>	<b>Sharon Schamber</b> July 13 Workshop: "Machine Quilting, Basic Feathers, Corners, Borders & Blocks" July 14 Presentation: "My Quilting Journey"
July 20-21 <b>Conejo Valley Quilters</b> <a href="http://www.conejovalleyquilters.com">www.conejovalleyquilters.com</a>	<b>Bobbi Finley</b> July 20 Workshop: "Making a Tile Block" July 21 Presentation: "Tile Quilts: Revisiting a Forgotten Form"
<b>AUGUST</b>	
August 6 <b>Santa Monica Quilt Guild</b> <a href="http://www.santamonicaquiltguild.org">www.santamonicaquiltguild.org</a>	<b>Sylvia Davis</b> Presentation: "Ethnic Fabric Quandary"
August 10 <b>San Fernando Valley Quilt Association</b> <a href="http://www.sfvqa.net">www.sfvqa.net</a>	<b>Sheila Williams</b> Workshop: "Computers using EQ software"
August 12-13 <b>Orange County Quilters Guild</b> <a href="http://www.orangecountyquiltersguild.com">www.orangecountyquiltersguild.com</a>	<b>Mike (Mac) McNamara</b> August 12 Presentation: "Humor, Meaning & Metaphor" August 13 Workshop: "Gentle Curved Piecing and Other Techniques"
August 19-20 <b>South Bay Quilters Guild</b> <a href="http://www.southbayquiltersguild.org">www.southbayquiltersguild.org</a>	<b>Rita Verroca</b> August 19 Presentation: "Appliqué" August 20 Workshop: "'Roses of Delight' Needle Turn Appliqué"
<b>SEPTEMBER</b>	
September 3 <b>Santa Monica Quilt Guild</b> <a href="http://www.santamonicaquiltguild.org">www.santamonicaquiltguild.org</a>	<b>Tracy Giovannoni</b> Presentation: "Art Fabrics for Modern Masterpieces"
September 6 <b>Santa Monica Quilt Guild</b> <a href="http://www.santamonicaquiltguild.org">www.santamonicaquiltguild.org</a>	<b>Sylvia Davis</b> Workshop: "Wibbons"
September 7-8 <b>San Fernando Valley Quilt Association</b> <a href="http://www.sfvqa.net">www.sfvqa.net</a>	<b>Rob Appell</b> September 7 Workshop: "Endangered Species" September 8 Presentation: "Quilts From the Sea and Beyond"
September 10 & 13 <b>Glendale Quilt Guild</b> <a href="http://www.glendalequiltguild.org">www.glendalequiltguild.org</a>	<b>Marcia Stein</b> September 10 Presentation: TBD September 13 Workshop: "Picture This – From Photo to Fabric"
September 10 & 13 <b>Simi Valley Quilt Guild</b> <a href="http://www.simivalleyquiltguild.org">www.simivalleyquiltguild.org</a>	<b>Nancy Ota</b> September 10 Presentation: "Sashiko" September 13 Workshop
September 11-12 <b>Valley Quiltmakers Guild</b> <a href="http://www.valleyquiltmakersguild.org">www.valleyquiltmakersguild.org</a>	<b>Cathy Van Bruggen</b> September 11 Presentation: "No Time to Sew" September 12 Workshop: "Appliqué the Easy Way"
September 16-17 <b>South Bay Quilters Guild</b> <a href="http://www.southbayquiltersguild.org">www.southbayquiltersguild.org</a>	<b>Cathie Hoover</b> September 16 Presentation: "Retrospective Trunk Show—Quilts and Garments" September 17 Workshop: "Best of Machine Techniques Sampler"
September 17 <b>LA County Quilters Guild</b> <a href="http://www.quiltguildla.org">www.quiltguildla.org</a>	<b>Joe Cunningham</b> Presentation: "Men and the Art of Quiltmaking" Workshop: "Rock the Block: Album Style"

Visit the Event Calendar of the Southern California Council of Quilt Guilds for additional events [www.sccqg.org](http://www.sccqg.org)



## OUT AND ABOUT

- The Summer Sale of 20% off everything in the store continues to **July 16** at **M&L Fabrics** in Anaheim and **Jenny's Fabrics** in Fountain Valley. Don't miss this, they only have two sales a year!
- And speaking of sales, if you like the fabrics at **Sew Modern**, get on their mailing list. Their sale events are frequent, yet short notice, like 20% off all fabrics and another 10% off to 40% off sale fabrics. The only way to find out is by the mailing list. [www.sewmodern.com](http://www.sewmodern.com)
- There's a new yarn store in town, **The Knitting Tree L.A.** in Culver City. They serve the creative and giving spirit of Los Angeles' new and experienced fiber artists. They believe in great yarns, inspiring and accessible classes at all levels, and a community spirit. [www.facebook.com/theknittingtreela](http://www.facebook.com/theknittingtreela)
- **August 1-3 Los Angeles Quilt Show and Fiber Art Fest** at Crafted at the Port of Los Angeles. There's even still time to enter your piece at this inaugural show. [www.laquiltshow.com](http://www.laquiltshow.com)
- **August 14 Tanners Sewing & Vacuum** in Westchester is hosting a representative from Husqvarna/Viking who will be giving two lecture/demos on embroidery software. Call (310) 670-2529 for details.
- **August 23 through October 2 Our Quilting Heritage** at the LDS Visitors' Center. A quilting exhibition featuring the Santa Monica Quilt Guild (Aug. 23-Sept. 4), Westside Quilters (Sept. 6-18) and African American Quilters of Los Angeles (Sept. 2-Oct. 2). [www.facebook.com/LATVC](http://www.facebook.com/LATVC)
- **August 30-31 Mountain Treasures Quilt Show** at Big Bear Lake, CA. Saturday 10-5, Sunday 10-4, admission \$5, children under 12 free. [www.busybearquiltguild.com](http://www.busybearquiltguild.com)
- **September 4-7 San Diego Quilt Show** at San Diego Convention Center honoring the San Diego Zoo, will feature classes, quilts and shopping. \$10 unlimited admission. [www.sandiegoquiltshow.com](http://www.sandiegoquiltshow.com)
- **September 6-7 Mountain Quilters of Idyllwild 11<sup>th</sup> Annual Quilt Show**. Saturday and Sunday 10-4, one day admission \$7, husbands free! Buckhorn Camp, 24641 Highway 243, Idyllwild, CA 92549.
- **September 20-21 Harvest of Colors Quilt Show** at Earl Warren Showgrounds in Santa Barbara. Over 200 traditional and art quilts, demonstrations and merchant mall. Saturday and Sunday, 10-5, Weekend Pass pre-sale \$8, at door \$10. [www.coastalquilters.org](http://www.coastalquilters.org)
- **October 2-4 Quiltfest Oasis** in Palm Springs at the Palm Springs Convention Center. This new show by Mancuso Show Management will have over 500 Quilts and Works of Fiber Art on display, feature a Merchants Mall, workshops and lectures, and much more! [www.quiltfest.com](http://www.quiltfest.com)
- **October 4-5 Trip Around the World Quilt Show** in Simi Valley. Quilts galore, boutique, vendors, professional appraisals, free parking. Saturday 10-5, Sunday 10-4, admission \$8. [www.simivalleyquiltguild.org](http://www.simivalleyquiltguild.org)
- **January 22-25, 2015 Road to California** at Ontario Convention Center, Classes now open for registration! [www.road2ca.com](http://www.road2ca.com)
- Inspired by these shows and want to road trip through California to visit quilt shows, here's a good resource: <http://quilterstravelcompanion.com/quilt-shows/california-quilt-shows.php>

If you know of events, sales, new stores or anything else that should be included on this page, please send to [Newsletter@WestsideQuiltersLosAngeles.org](mailto:Newsletter@WestsideQuiltersLosAngeles.org)

---

## NEWSLETTER

The first Survey Question of the Month was great. This month's question:

### What is your go to reference?

Whether it's a book or magazine that provides endless inspiration, a website with numerous tips and tutorials, an individual that you feel knows everything, or a mix of any of those, we want to hear about it! Email [Newsletter@WestsideQuiltersLosAngeles.org](mailto:Newsletter@WestsideQuiltersLosAngeles.org).

And we're still looking for submissions of travelogues, book reviews or anything else quilting related. Also, send in your news items of awards, births, kitchen remodels, published articles, lottery wins, or whatever. We want to know about you!

**Lisa Redmond**

# TREASURER'S REPORT

## MAY

<b>Opening Balance April 23, 2014</b> <i>Calculation error appeared corrected from prior month.</i>		\$4,705.64
INCOME		
Dues	\$ 30.00	
Workshop Fees	410.00	
5/3 Meeting Guest Fee	10.00	
Amazon	34.52	
Refund of Workshop Rent	220.00	
INCOME – FY 2015		
Dues	400.00	
Donations	135.00	
TOTAL INCOME		1,239.52
EXPENSE		
Gen. Meeting Expense	(146.40)	
Workshop Expense	(164.78)	
Charitable Contributions	(400.00)	
Square Up Fees (cr. cards)	(16.85)	
TOTAL EXPENSE		(728.03)
<b>Closing Balance May 31, 2014</b>		\$5,217.13

## JUNE

<b>Opening Balance June 1, 2014</b>		\$5,217.13
INCOME		
Dues	\$2,750.00	
Workshop Fees	370.00	
Donations	735.00	
Amazon	16.06	
TOTAL INCOME		3,871.06
EXPENSE		
Workshop Expense	(896.23)	
Website Annual Fee	(220.25)	
Government Fees	(20.00)	
Square Up Fees (cr. cards)	(3.96)	
TOTAL EXPENSE		(1,140.44)
<b>Closing Balance June 30, 2014</b>		\$7,947.75

## TREASURER'S REPORT (cont.)

### BUDGET 7/2/2014 Final

	<i>Actual FYE 05/31/2013</i>	<i>Budget FYE 05/31/2014</i>	<i>ACTUAL FYE 05/31/2014</i>	<i>BUDGET FYE 05/31/2015</i>
INCOME				
Membership Dues	(81) \$4,050	(95) \$4,750	(102) *\$5,000	(100) \$5,000
Workshop/Event Fees	(9) \$4770	(10) 8,800	(9) 8,704	(9) \$8,200
Guests (@ \$10 Qtrly. Mtgs.)	80	200	80	150
Donations (General)	141	700	**1,505	1,100
Donations (Holiday Tea)	375	400	250	300
Fundraiser Profit	456	0	0	0
Fabric Sale Aug 2014			0	200
Amazon/IGive Receipts	210	240	125	100
<b>TOTAL INCOME</b>	<b>\$10,151</b>	<b>\$15,090</b>	<b>\$15,664</b>	<b>\$15,050</b>
EXPENSES				
Administration	166	100	70	100
Charitable Contributions	1050	500	700	500
Holiday Tea Char. Contrbtn.	500	500	500	500
Legal & Government Fees	20	20	0	20
Meeting Equipment	135	150	292	150
Post Office Box Rental	120	120	124	124
Printing/Promotion	42	0	0	0
SCCQG Dues & Insurance	275	310	370	350
Tax Returns/Consulting	300	300	300	300
Website	220	220	220	220
Square Up Fees (cr. cards)	19	50	126	50
Mileage Reimb.	206	150	0	50
Philanthropy	142	50	300	50
Program Expense:				
Quarterly Meetings	(4) 3,025	(4) 3,550	(4) 3,355	(4) 3,200
Workshops/Events	(9) 7,076	(10) 10,050	(9) 9,291	(9) 9,500
<b>TOTAL EXPENSES</b>	<b>\$13,297</b>	<b>\$16,070</b>	<b>\$15,638</b>	<b>\$15,114</b>
<b>PROFIT/LOSS</b>	<b>(\$3,146)</b>	<b>(\$980)</b>	<b># 26</b>	<b>(\$64)</b>

\* Includes \$400 in FY 2015 dues (8 members).

\*\* Includes \$135 in FY 2015 donations.

# Includes \$535 (\$400 and \$135 as above) for FY 2015 deposited May 2013.

Actual FY 2014 profit/loss is a loss of (\$509).

**Tina Nord**



# *Our* **QUILTING** *heritage*

Please join us  
for a quilting exhibition  
featuring:

*Santa Monica Quilt Guild*

August 23 - September 4

*Westside Quilters*

September 6 - September 18

*African American  
Quilters of Los Angeles*

September 20 - October 2

Los Angeles Temple  
Visitors' Center  
10777 Santa Monica Blvd,  
Los Angeles, CA 90025  
(310) 474-1549  
[facebook.com/LATVC](https://facebook.com/LATVC)





# WESTSIDE QUILTERS

LDS Quilt Exhibition  
Los Angeles Temple Visitors Center  
10777 Santa Monica Blvd.  
Los Angeles, CA 90025

**Westside Quilters will display their quilts Sept. 6 to Sept. 18, 2014**  
**QUILTS MUST BE TURNED IN AT THE AUGUST 16 WESTSIDE MEETING**

Please read and follow these rules:

- To enter an item in this Quilt Show, you must be a member of Westside Quilters
- The item you enter must be made by you to be eligible for display.
- A completed form must have a photograph of the item.
- A 4" sleeve must be sewn onto the back of each quilt.
- A label with your name, address and phone number must be sewn on the item.

**Email or mail this entry form with a photo ASAP to**  
Perla Rothenberg, 3159 Queensbury Dr., Los Angeles, CA 90064  
[ployaroth@sbcglobal.net](mailto:ployaroth@sbcglobal.net)

Exhibitors name:			
Address:			
E-mail address			
Phones	HM:	WK:	CELL:
Entry Title			
Designed By			
Quilted By			
Description (50 words or less)			
Techniques used (check all that apply):	Hand Pieced ____ Machine Appliqued ____ Embellished ____	Machine Pieced ____ Hand Quilted ____ Other Techniques ____	Hand Appliqued ____ Machine Quilted ____
Measurements	Width (horizontal) _____ Length (vertical) _____		

Every effort will be made to ensure the safety of all items entered. However, we are unable to insure individual items. Theft, loss or damage insurance is the responsibility of the member entering an item in the show. You will be asked to sign a waiver to this effect when you deliver your items for display.

## Next Executive Board Meeting

The next meeting of the Executive Board will be held July 26.  
All members of Westside Quilters are welcome to attend with prior notice to  
[Pres@WestsideQuiltersLosAngeles.org](mailto:Pres@WestsideQuiltersLosAngeles.org).

### Our Mission

A new kind of guild organized for educational and charitable purposes; to promote cooperation and the exchange of ideas among quilters; to instruct members in methods and techniques of traditional and contemporary creative quilting; to serve mini-groups and their philanthropic endeavors within the community; to inspire personal achievement.

### Officer

President	Perla Rothenberg
Vice President	Roberta Walley
Secretary	Lisa Drew
Acting Treasurer	Tina Nord
Program	Stephanie Horsley
Membership	Sally Wright
Newsletter	Lisa Redmond
Philanthropy Co-Chairs	Debbie Nussbaum and Tanya Heldman
Website Manager	Sally Wright

### Appointed Positions

Hospitality	Sally Madigan and Bobbi Leung
Meeting Set-Up/Take-Down	Stephanie Wexler and Ann Chach
Photographer	Tanya Heldman

### Mailing Address

Post Office Box 641925  
Los Angeles, CA 90064

**F.E.I.N.** 27-3145733

(Federal Employer Identification Number)

### Website

[www.WestsideQuiltersLosAngeles.org](http://www.WestsideQuiltersLosAngeles.org)

**Facebook** We're on Facebook. Check out the banner on the WQ website home page (lower center).

**Amazon** There is a boxed message in the lower center of our website home page giving a direct link to Amazon. By using this link, anything you purchase earns a 4% "dividend" paid directly to WQ. *This only works if you enter the Amazon website from the WQ website link.*

**iGive.com** This is another way to benefit WQ when shopping on the Internet. Here you need to register (the iGive.com logo appears in the lower center on the WQ website home page and links you directly to iGive.com). More than 800 Internet retailers participate (Barnes & Noble, Bed Bath & Beyond, Enterprise Rent-A-Car, Lancome -- to name a few). Follow the instructions at iGive.com.

**Non-Profit Status** Westside Quilters is tax-exempt from Federal income tax under section 501(c)(3) of the Internal Revenue Code, and classified as a public charity under section 170 of the Code, according to the determination letter dated May 26, 2011 received from the Internal Revenue Service. The effective date of exemption is June 17, 2010. Donations to **Westside Quilters** are fully tax-deductible for individuals and other entities such as corporations, partnerships, trusts; **Westside Quilters** is qualified to accept tax deductible bequests and gifts or transfers of gifts.