



MESSAGE FROM OUR PRESIDENT

TINA NORD

An Afternoon with Alex Anderson

We have a major announcement: Sunday, April 14, 2013, from 2:00 to 4:00 PM, at University Synagogue on Sunset Boulevard in Brentwood, the most famous television quilter in America, the one individual who first brought quilting to the wide American television audience, will give us a presentation, answer questions, sign books, and have patterns and her designs for sale. Alex Anderson in person! Alex is a founding partner of The Quilt Show.com and The Quilt Life magazine with Ricky Tims. Her books, fabrics, patterns and personality are well known to all of us.

The plan is to duplicate our successful fundraiser with Kaffe Fassett in September 2011. Tax-deductible tickets of \$25 each will go on sale February 1. We'll produce a colorful bookmark as a promotion piece for quilt shops and guilds, and cover the electronic media. ***Our member Marianne Simpson has agreed to head up our marketing efforts again. Your help is needed to keep a continuous supply of our bookmarks at select Southern California quilt shops – we want you to adopt a favorite quilt shop or one you frequent. It's a great excuse to go shopping. Please contact Marianne through my email, Pres@WestsideQuiltersLosAngeles.org.***

Do you have an Alex Anderson quilt? One inspired by her fabric or her books? We'd like about 10 of these quilts to display at the fundraiser. Next month we will set out some guidelines. Red, anyone?

Quilts for Sandy Flood Victims. Great thanks to the wonderful quilts donated to send to our fellow guild in New Jersey hard-hit by Sandy hurricanes and floods. We're shipping them out this week. In addition, the WQ Executive Board authorized the donations of \$500 to the American Red Cross and \$250 to the Salvation Army to support flood relief.

Donations from the December 8 Holiday Member Tea will be given to the Ocean Park Community Center (\$250) and the Westside Food Bank (\$250).

As we enter this special season of the year, please reflect on the good your guild has achieved, and the good we have yet to give.

Best wishes for happy holidays!

PROGRAMS

ROBERTA WALLEY AND SHARON WHELAN

We wish all our Westside Quilter friends a Happy and Healthy Holiday Season!

It has been a pleasure getting to know so many of you as loyal supporters of our programs. Our workshops, general meetings and philanthropy projects have all been well attended and successful because of your participation.

Because of your continued enthusiasm we are able to hire nationally and internationally known speakers and teachers.

It is our time to say a big **THANK YOU!**

Upcoming Workshops

We currently have two workshops open for registration.

January 11, 2013

Sylvia Davis will be teaching "1001 Scraps."

February 8, 2013

Lenore Crawford will be teaching "Fusing and Fabric Painting."

Don't miss out! Sign up soon and give yourself a gift.....you deserve it!

Giving for Thanksgiving Workshop

Thanks to all you "sewers" who came to our November 10 Philanthropy Workshop "*Giving for Thanksgiving.*" We were very productive: pattern cutters, fusers, sewers, and stuffers all did their jobs beautifully.

We made 50 fabulous pillows for the Cancer Support Community Benjamin Center. This could not have happened without your great support. Our heartfelt thanks to **Peggy Belcher-Dixon** for her hard work and dedication that made this workshop happen.



OUR GUEST PRESENTERS *and* TEACHERS

SYLVIA DAVIS

Workshop

Friday, January 11

1001 Scraps

This workshop will be open for registration in mid-November

We will e-mail members with the fee and registration details

You will recognize **Sylvia** as one of our active Westside Quilters members. She has presented some very popular workshops to us over the past two years, and "1001 Scraps" promises to be another winner! Be ready to sign up when registration opens in November!

Sylvia--quilter, designer, teacher, and lecturer--lives in Inglewood, Los Angeles. She is a very proud and busy member of the African-American Quilters of Los Angeles (<http://www2.easysite.com/AAQLA>.) where she has served as Vice President, Membership Chair, Newsletter editor, and Program chair. As well as teaching and quilting, Sylvia enjoys organizing mystery quilts, exchanges and challenges, swaps, round robins and Block of the Month—a busy lady!

She developed her creative skills by crocheting, knitting, and doing other crafts with her mother, but quilting eventually became her first love. She has had quilts displayed at the Pacific International Quilt Festival, Road to California, the African-American History Museum, the Riverside Museum and Simply Quilts.

Quote from Sylvia: "Did you know that having a "stash" is overrated? Learn the 3 things a scrap quilt will do for you while viewing how I attempt to use up my sizeable stash."



LENORE CRAWFORD

Workshop

Friday February 8

Fusing and Fabric Painting

Registration to open in mid- November

GENERAL MEETING

Saturday, February 9

Award Winning Techniques for Fusing Fabrics

In her biography, **Lenore** writes: "After working in a medical laboratory and chemical research lab for many years, I decided to pursue art as a full-time endeavor. Creating art is my dream job. I now walk up to my studio in my attic and play with fabric and fabric paint for a "job"! Currently I am teaching my fusing/fabric painting using my patterns plus other techniques I use. Some of my artwork can be seen at my [Available Work](#) link."

At our meeting, **Lenore** will talk about her own interpretation of fusing and fabric painting techniques she now uses to create art quilts with depth and color from photographs she has taken in her travels. She will tell how she creates a piece from beginning to end and gives secrets she has learned on how to make your design a winner. She has won prizes with this new style of art quilting such as the Best Wall Quilt at the 2007 AQS Nashville Show and the 2011 Moda Best Wall Quilt at the AQS Show in Paducah for her "Port of Cassis" shown here.





Our Second Annual Member Holiday Tea

Saturday, December 8th
2:00 to 4:00 PM



Our Treasurer, **Aileen Cooke**, has graciously volunteered to be our hostess for this year's Holiday Tea. **Aileen** lives in Santa Monica. Members can find her address on the roster on the website. We will email the address and parking information to all members who RSVP for the Tea.

The **Holiday Tea** is an opportunity for members to spend time with one another. Think of this afternoon as a reward for the charitable and educational work the guild has accomplished during the past year. There is no program. Good cheer will reign!

Each member is asked to make a \$10.00 cash donation, paid at the door, which will be 100% contributed to the Ocean Park Community Center and the Westside Food Bank.

We also ask that members bring a savory or sweet treat (about 12 small servings) on a serving plate with your name written on masking tape which you tape to the bottom of the plate. When you RSVP, please give a general idea of what you're bringing. Since we're celebrating all the various cultural expressions of the year-end holidays, it might be nice for members to think about bringing something ethnic or something remembered from childhood.

Lastly, we ask that members RSVP to Pres@WestsideQuiltersLosAngeles.org. Please mention the savory or sweet treat you intend to bring. If we are heavy on pepperkakor or pferneuse, we may ask you to bring an alternate.

See you on the 8th!



Seasonal Note

Please remember to shop for your Holiday gifts via Amazon and IGive.com and make some money for Westside Quilters!

Simply go to our website, www.WestsideQuiltersLosAngeles.org, and scroll down the first page until you see the icons. For instance, just click on Amazon and you'll be on the site immediately. Shop as usual.

Because you entered the Amazon website via our website, Westside Quilters earns a 4% donation from Amazon on most purchases.

IGive.com requires a one-time registration and then a percentage donation applies on your purchases.

These donations don't cost *you* anything!



UPCOMING PROGRAMS

Workshops open for registration:

January and February workshops are now open for registration.

To Register:

Go to the **WQ website**; choose *Calendar* and scroll down to individual workshops. See the link to the Workshop Registration Form (which you can fill in on-line) and the supply list. **First, please notify programs of your intent to attend a workshop by e-mailing [Programs@WestsideQuiltersLos Angeles.org](mailto:Programs@WestsideQuiltersLosAngeles.org). See the workshop no-refund policy (substitutions allowed) shown on the Workshop Registration Form. For last-minute registrations, contact the Program Co-Chairs. WQ will hold your space at the workshop for 14 days to give you time to mail in your check and Workshop Registration Form to the WQ post office box. For last-minute registrations, contact the Program Co-Chairs. Credit card/debit cards now accepted. Note Early Registration discounts.**

WQ Meeting and Workshop locations and costs:

Quarterly meetings: WQ members attend at no charge. Non-members are welcome for a \$10.00 guest fee.

Workshops: fees vary. Non-members pay a \$15.00 surcharge. Workshops are held at the Westside Pavilion Community Room B (Pico & Westwood Boulevards); parking fees are included in the workshop registration fee. Supply lists are on WQ website.

DECEMBER 8 Holiday Event
SATURDAY

Second Annual Member Holiday Tea

Please see details on page 3 of this newsletter.

2013

JANUARY 11
FRIDAY

Workshop

Registration is now open.
\$35 fee for members;
\$50 fee for non-members.

Take \$5 discount if fee/form is received by December 11.

Sylvia Davis

"1001 Scraps" Another dynamic design by WQ member Sylvia Davis

The class project is a table runner version of the quilt with 1,000 different fabrics plus black background. There are no repeats!

see website: easysite.com/SylviaQuilts.



FEBRUARY 8
FRIDAY

Workshop

Registration is now open.
\$60 fee for members
\$75 for non-members
\$15 material fee is included in the registration fee

Take \$5 discount if fee/form is received by January 8

Lenore Crawford

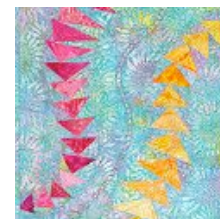
Fusing and Fabric Painting

Famed Michigan quilter on design and fuse technique (no sewing machine needed in class). Make patterns from photos, or choose from 6 different designs offered by the teacher. Add fabric painting for detail and depth..

See website lenorecrawford.com.



February 9 Saturday	GENERAL MEETING	LENORE CRAWFORD	<i>Award-winning Techniques for Fusing Fabrics</i>
March 9 Saturday	Workshop	Don Beld	<i>Civil War Potholder Blocks for Charity Quilts</i> Each block is quilted and bound, then assembled into a large quilt. Special philanthropic event <i>Free registration for WQ members.</i>
April 5 and 6 Friday, Sat.	Workshops	Ursula Kern	<i>Announcement coming in the January newsletter.</i> <i>These individual workshops will be available to members only.</i>
April 14 Sunday	Fundraiser	ALEX ANDERSON	<i>An Afternoon with Alex Anderson</i> <i>At the University Synagogue, Brentwood</i>
May 17 Friday	Workshop	Pam Holland	<i>Drapplique</i>
May 18 Saturday	GENERAL MEETING	PAM HOLLAND	<i>My Life as a Traveling Quilter</i>
June 7 Friday	Workshop	Nancy Ota	<i>Sashiko</i>
August 16 Friday	Workshop	Sharon Schamber	<i>Basic Corners, Borders, and Blocks</i>
August 17 Saturday	GENERAL MEETING	SHARON SCHAMBER	<i>My Life as a Quilter</i>
September	Workshop		<i>TBA</i>
October 11 Friday	Workshop	Sue Rasmussen	<i>Curved Paper-Pieced Flying Geese</i>
October 12 Saturday	GENERAL MEETING	SUE RASMUSSEN	<i>A Desperate Housewife's Quilt Journey</i>
November 9 Saturday			<i>Giving for Thanksgiving</i> <i>A Special Children's Philanthropy Project</i>
December Saturday			<i>Third Annual Members Holiday Tea</i>



MEMBERSHIP

Luann Jaffe

WQ membership is still growing and members are enjoying a wonderful array of workshops and speakers at our General Meetings.

Other membership benefits include the monthly newsletter and frequent news bulletins, attendance at quarterly meetings at no charge (visitors pay \$10.00), workshop registration at member rates (non-members pay a \$15.00 surcharge), and Guild discounts at several neighborhood retailers including Sew Modern. We believe we offer an unparalleled line-up of speaker and workshop programming.

You can access the membership form on our website, WestsideQuiltersLosAngeles.org.

Questions? E-mail me at Membership@WestsideQuiltersLosAngeles.org



December 6	Madeline Erlich Veronica Gray
December 18	Cathy Seidman
December 20	Peggy Belcher-Dixon
December 31	Patti Oblath

Sandra Lauterbach's "Gift of Dreams"
has been accepted into the
Los Angeles Art Association 2012 Open Show
which opens on
December 1 at
LAAA Gallery 825 on La Cienega Blvd.
The show was curated by
Rebecca Morse, Associate Curator at MOCA



Sandra, along with Sherry Kleinman and Sally Wright, will also have works in the SAQA (Studio Art Quilt Associates) show "Creative Expressions" at the Poway Center for the Performing Arts in northern San Diego County.
The show will be up from January 5 through 30th with an opening reception on January 5th.

TREASURER'S REPORT
for the month of November 2012
Aileen Cooke

Opening Balance November 1, 2012		\$8,140.11
INCOME		
Amazon (10/31)	18.44	
Workshops	30.00	
Donations		
TOTAL INCOME		\$48.44
EXPENSE		
Philanthropy/Fusible bat	(\$45.28)	
Workshop room rents (Jan, Feb 2013)	(\$220.00)	
Charitable contributions	(\$1250.00)	
TOTAL EXPENSE		(\$1515.28)
Closing Balance November 23, 2012		\$ 6,673.27

Please Note

Due to my travel plans at the end of this month, checks and credit card payments for workshop registrations received through November 30 will not be deposited until early December. This income will be shown in the December Treasurer's Report. Remember that the early-bird discount of \$5.00 applies to workshop registrations received on or before December 11 in the case of the Sylvia Davis January 11, 2013 workshop."



Cancer Support Community-Benjamin Center

" Thanks so much for thinking of us! The mission of Cancer Support Community is to ensure that all people impacted by cancer are empowered by knowledge, strengthened by action and sustained by community at no cost to participants."

**Dolly Philips, Program Director,
Benjamin Center.**

YWCA Santa Monica Westside Housing and Education Program

"Thank you so much for the four fabulous quilts, we can match individual personalities to the quilts. Your quilts mean a great deal to the young women. That you have chosen to share something so lovingly made means that someone cares. "

Sharrie Wunder, Housing Director

PS ARTS, Children's Art Program

" Please accept our most sincere thanks for your generous gift in support of our mission to improve the lives of children by bringing arts education to underserved public schools and their communities. Children attend music, theater and visual arts classes at least once a week. A third grader wrote, I wish school never ended; I can't wait to be in your class next year."

Kristen Paglia, Executive Director, Education & Programs.

PHILANTHROPY/EDUCATION

Peggy Belcher-Dixon

PHILANTHROPY LABELS

The new cloth identification labels for you to sew to the back of each quilt you donate will be available at the Holiday Tea, just in time for those who are making donations during the Holidays.

WORKSHOP SCHOLARSHIPS ARE AVAILABLE FOR JANUARY AND FEBRUARY

We continue to look for Workshop Scholarship recipients our workshops; workshop enrollment, fees and parking are paid for by WQ. Referrals for scholarships are currently being accepted at Philanthropy@WestsideQuiltersLosAngeles.org.

LOOKING FOR A PHILANTHROPY PROJECT?

Westside Quilters is collecting, and will ship, quilts to a New Jersey quilt guild hard-hit by the flood.

Pieceful Shores Quilt Guild in Manahawkin, New Jersey, will receive our quilts directly and hand each quilt to their guild members and local citizens in special need.

The deadline is **Saturday, December 4**, to deliver your quilts to

- (1) Tanner's Sew & Vac at 6230 West 87th Street in Westchester (310-670-2429), or
- (2) the home of Sally Wright in Westwood (email Sally at sally@sallywrightquilts.com to coordinate).

They are looking for bed-size quilts: twin, double, queen or king. Machine quilting is preferred (not tied).

Westside Quilters at the Giving for Thanksgiving workshop



"Giving for Thanksgiving" Workshop a Great Success!!!

The "Giving for Thanksgiving" workshop held on November 10th far exceeded our expectations. Both the morning and afternoon sessions were very well attended.

Many thanks to **Roberta Walley** for hosting this workshop. Roberta, after providing an overview of the project's construction, organized various work stations that made the construction of the Heart Pillows flow very easily.

Our president, Tina Nord, provided delicious food and drinks. We all thoroughly enjoyed a fun and congenial day of working together for charity.

For those who are unable to attend this workshop, we will be accepting your pillows at the Second Annual Member Holiday Tea.

OUT AND ABOUT With Sally Madigan

ROAD TO CALIFORNIA - January 24-27, 2013:

Yes, you could wait until all the December celebrations are over, but why not give yourself a gift? If you're interested in taking a class, check the website - www.road2ca.com, to see which classes are available.

Some begin on January 21st.

Admission to the show and Quilt Preview night are included with your class registration fee.

But if you're not going to take a class, request your Admission Wristband so you can arrive at Road and just walk in.

The **\$15.00** admission fee covers all three days and admission to the Quilt Preview on Wed. evening.



Quilts are beautiful in any format!!!

These Snow Quilts are by Artist
Simon Beck
in Savoie, France.

He puts on snowshoes then spends hours and days stomping through the snow, leaving behind these "snow quilts."

A NEIGHBORLY QUILT CALENDAR

You may be interested in attending meetings of our neighbor guilds, as we welcome quilters from other guilds. Here are the meetings, workshops and events of note through February 2013. This information is current when we went to press, but please check with the appropriate guild before you attend a meeting to check meeting details.

See also the Event Calendar at the Southern California Council of Quilt Guilds website: www.sccqg.org.

Glendale Quilt Guild	www.GlendaleQuiltGuild.org . Contact: Info@GlendaleQuiltGuild.org
San Fernando Valley Quilt Association	www.SFVQA.org . Contact, go to website, then Committees and link to Program
Santa Monica Quilt Guild	www.SantaMonicaQuiltGuild.org . Contact: Info@SantaMonicaQuiltGuild.org
South Bay Quilters Guild	www.SouthBayQuiltersGuild.org . Contact, go to website, Contact Us and link to Program VP
Valley Quiltmakers Guild	http://www.ValleyQuiltmakers.org . Contact: VQG@ValleyQuiltmakers.org

DATE	SPEAKER/TEACHER	GUILD
December 8	Second Annual Holiday Member Tea	Westside Quilters
2013		
January 2	Sherry Werum, Presentation <i>"Mosaics and the Quilts They inspire."</i>	Santa Monica
January 9	Sandy Turner, Presentation <i>"Sensational Borders."</i>	Glendale
January 11	Sylvia Davis, Workshop "1001 Scraps"	Westside Quilters
January 12	Sandy Turner, workshop <i>"Landscape Attic Windows."</i>	Glendale
January 13	Judy Cisneros, workshop <i>"Circle Pizzazz"</i>	San Fernando
January 14	Judy Cisneros, Presentation <i>"Imagination and Inspiration"</i>	San Fernando
Jan 24-27	Road to California <u>Ontario convention center</u>	
January	Gwen Marston is scheduled but no details have been published	Valley Quiltmakers
February 6	Pat Munn <i>Trunk Show</i>	Santa Monica
February 8	Lenore Crawford, workshop "Fusing and Fabric Painting"	Westside Quilters
February 9	Lenore Crawford, Presentation "Award-winning Techniques For Fusing Fabric"	Westside Quilters
February 10	Robin Gallagher; Workshop <i>"Magical 3D Stars"</i>	San Fernando
February 11	Robin Gallagher; Presentation <i>"Keep it Sew Simple."</i>	San Fernando
February 13	Queenie Quilts/Catherine Wilson <i>"Quiltwork Paper Piecing"</i>	Glendale
February 16	Workshop <i>Bali Wedding Star</i>	Glendale
February 16 and 17	QUILT SHOW See we-site for details	South Bay
February (Details not available)	Scarlett Rose <i>Crystallized Celtic Quilt</i>	Valley Quiltmakers

Minutes of the Executive Board Meeting, November 10, 2012

Welcome and Call to Order at 3:35PM at the home of Roberta Walley.

Motion to approve minutes of July 21, 2012 Board Meeting by Sally Wright and seconded by Luann. Minutes approved.

President's Report by Tina Nord

Tina will follow up in January on Julie Silber's suggestion that WQ make Nursing Home Quilt Presentations
Thank you letters from YWCA and P.S. were circulated
Warm & Natural delivered a large quantity of samples that will be distributed at the February General Meeting
Tina suggested that WQ continue to support SMQG
Seven Sisters Quilt Show - Bus discount offered by San Luis Obispo Guild

Vice President's Report by Sally Wright

SCCQG election results reported in the newsletter
Next meeting is January 13, 2013.
Carolyn Reese presented new ticket structure for Road to California
New chair for Meet the Teachers - New website soon

Treasurer's Report by Aileen Cooke

Current opening balance is \$7,938.55.

Membership Report by Luann Jaffe

Membership forms will be available at the Holiday Tea.

Newsletter by Sally Madigan & Janet Thornber

Deadline for December newsletter is November 27, 2012.

Philanthropy Report by Peggy Belcher-Dixon

Designated charities will receive the 50+ Heart Comfort Pillows made at the November 10th Thanksgiving Workshop.
Motion by Sally Wright and seconded by Sally Madigan for Ocean Park
Community Center and Westside Food Bank to receive \$250.00 each from donations from the Holiday Member Tea. Motion passed.
WQ Cloth labels are available for distribution.

Programs Report by Roberta Walley & Sharon Whelan

Westside Pavilion workshop dates have been changed to Friday's.
Registration will be open next week for January-Sylvia Davis and February-Lenore Crawford. Discussion followed on ways to reduce registration fees.
Board consensus to subsidize the expenses of each workshop up to \$150.00, to offer an "Early Registration Discount" of \$5.00 per person for registrations received 30 days or more in advance of the workshop, and to consider capping expenses charged by teachers/speakers.

Member Holiday Tea by Tina Nord

Date for the Tea confirmed to be December 8, 2012 at the home of Aileen Cooke.
Executive board members were asked to bring additional refreshments.

WQ Aid to Sandy Flood Victims by Tina Nord

Email was circulated from Director Patrick Ela
Motion was passed to donate \$750.00 for Sandy flood relief. \$500.00 to American Red Cross and \$250.00 to Salvation Army. \$750.00 Budgeted 2012-2013.

Alex Anderson Fundraiser

Organization and Marketing will be similar to the Kaffe Fassett event
Bookmarks need to be printed in early January, 2013
Photo approval necessary from Alex Anderson
Parking is available/no tickets sold at the door
Budget to be adopted at the next board meeting.

Old Business - none

New Business - none

Next Board Meeting is Saturday, January 19, 2013 at the home of Sally Wright at 10:00AM.
The meeting was adjourned at 5:20PM.
Submitted by, **Brenda Gottfried**, Secretary

Next Executive Board Meeting

The next meeting of the Executive Board will be held on
January 19, 2013 at the home of Sally Wright at 10:00AM.

Please contact Tina Nord at Pres@WestsideQuiltersLosAngeles.org
for directions.

All members are welcome to attend Executive Board meetings.

Our Mission

A new kind of guild organized for educational and charitable purposes; to promote cooperation and the exchange of ideas among quilters; to instruct members in methods and techniques of traditional and contemporary creative quilting; to serve minigroups and their philanthropic endeavors within the community; to inspire personal achievement.

Officers

President	Tina Nord
Vice President	Sally Wright
Secretary	Brenda Gottfried
Treasurer	Aileen Cooke
Membership	Luann Jaffe
Newsletter Co-Editors	Sally Madigan Janet Thornber
Philanthropy/Education Program	Peggy Belcher-Dixon Roberta Walley Sharon Whelan
Website Manager	Sally Wright

Appointed Positions

Nancy Sharpe	Hospitality
Stephanie Wexler	Meeting Set-Up
Tanya Heldman	Photographer

Mailing Address Post Office Box 641925
Los Angeles, CA 90064

F.E.I.N. 27-3145733
(Federal Employer Identification Number)

Website

www.WestsideQuiltersLosAngeles.org

Facebook We're on Facebook. Check out the banner on the WQ website home page (lower center).

Amazon There is a boxed message in the lower center of our website home page giving a direct link to Amazon. By using this link, anything you purchase earns a 4% "dividend" paid directly to WQ. *This only works if you enter the Amazon website from the WQ website link.*

IGive.com This is another way to benefit WQ when shopping on the Internet. Here you need to register (the IGive.com logo appears in the lower center on the WQ website home page and links you directly to IGive.com). Over 800 Internet retailers participate (Barnes & Noble, Bed Bath & beyond, Enterprise Rent-A-Car, Lancome to name a few). Follow the instructions at IGive.com.

Non-Profit Status Westside Quilters is tax-exempt from Federal income tax under section 501(c)(3) of the Internal Revenue Code, and classified as a public charity under section 170 of the Code, according to the determination letter dated May 26, 2011 received from the Internal Revenue Service. The effective date of exemption is June 17, 2010. Donations to **Westside Quilters** are fully tax-deductible for individuals and other entities such as corporations, partnerships, trusts; **Westside Quilters** is qualified to accept tax deductible bequests and gifts or transfers of gifts.