



MESSAGE FROM OUR PRESIDENT

TINA NORD

One year I found myself waiting on a cement bench outside *Road to California*. Soon a group of strangers involved me in their conversation about their Singer Featherweight collections. I learned that the goal was to own a Featherweight manufactured in the year of your birth. They felt sorry for me because I wasn't a member of the club, let alone the owner of a 1942 machine ("my" year).

This March at Asilomar, my teacher, Australia's **Jenny Bowker**, took time away from Islamic tile designs to offer her favorite quilt pattern for a quick gift or charity quilt. This turned out to be the "Broken Star" pattern with a unique way of making a lot of half-square triangles in one fell swoop. Jenny said the ideal size was 42 inches square – a fine baby quilt size, a fine lap-quilt size, a fine size for a college student to use on top of a twin bed.

Two days later, **Roberta Walley**, our Program Co-Chair and a fellow Asilomar student, attended a charity dinner sponsored by the St. Joseph's Center in Venice. This community organization works with the homeless and working poor to provide resources to change their lives and allow them to become self-supporting citizens; Westside Quilters made their 2011 Christmas donation to this group. Roberta learned that this group needs quilts for babies and small children – 42" square quilts were suggested.

I've been working on a quilt started in an Ursula Kern class. You guessed it--it's 42" wide.



**Sunday, April 14
2:00 to 4:00pm
University Synagogue**

Our exciting fundraiser is fast approaching!

This will be a rare opportunity to see and hear **Alex Anderson** in person.

We have a beautiful venue at University Synagogue.

Their strict parking rules require us to provide parking authorities with a master list of all attendees, and to have all attendees show written confirmation that they are on the list.

Please buy your tickets as soon as possible!

Our website WestsideQuiltersLosAngeles.org has the order form.

Your ticket will be both your letter of confirmation as well as your receipt for this tax-deductible contribution.

See you there!

PROGRAMS

ROBERTA WALLEY AND SHARON WHELAN

We have some fabulous quilters to look forward to in our upcoming programs.

First, **Ursula Kern** will be presenting two separate workshops on April 5 and 6. Currently, these workshops are full, but if you find you are unexpectedly free on one of those days, please contact the WQ program chair to see if a spot has opened up.

On May 17, **Pam Holland**, an exciting quilter and traveler from "down under," will be teaching *Drapplique* on May 17 and presenting a look at her many exciting travels at our General Meeting on May 18 (remember the new location!).

Then, in a completely different vein, **Nancy Ota** will enthrall us with her expertise in the beautiful needlework form of Sashiko on June 7.

Registration for both **Pam Holland** and **Nancy Ota's** workshops will be open on March 27--don't forget the early bird discount!

All the information that you will need for registering in these workshops is given in the Programs section of this newsletter.

March 9 was a special day. Twenty seven members of Westside quilters met for a unique and very interesting morning seminar on different facets of making philanthropy quilts—a topic dear to our hearts.



Luella Fournell and **Sylvia Davis** each spoke and shared their experiences on making quick, simple quilts for others in need. **Maureen Gardner** guided us through some of the "do's and don'ts" of making group quilts. **Keiko Tapp**, talked about the quick and easy patterns she has used for the many quilts she sends to Japan's tsunami victims. A big thank you to you all!

Look inside this newsletter for an in-depth description of this WQ unique meeting.

Alex Anderson's April Afternoon With Westside Quilters

We are nearing the end of March, the first day of Spring has come and gone, Daylight Savings is giving us sunshine until 6:00 pm, but do you have your ticket to see **Alex Anderson** on the afternoon of April 14th?

If not, wait no longer; log-on to the [Westside Quilters](#) website and follow the instructions under Alex's photograph to purchase your \$25.00 ticket. No tickets will be sold at the door. Your "ticket" will be the letter confirming the admission(s) you have purchased for yourself and any guests. The confirmation letter will be mailed to you, and must be brought with you to gain entry to the parking lot and **Alex's** program at [University Synagogue in Brentwood](#).

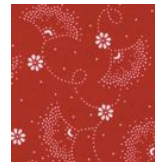
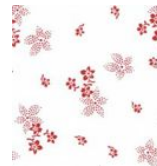
As you know, **Alex** is a very skilled quilter, and will be giving us insight she has acquired over the years about piecing, applique, redwork, shopping, making baby quilts or teaching your favorite youngster to quilt. Alex will have a number of books with her, so get ready to add to your library. Maybe you'd like

Fabric Shopping with Alex Anderson,
Simply Stars: Quilts That Sparkle,
Piecing Tips and Tricks,
Beautifully Quilted with Alex Anderson,
Neutral Essentials, Start Quilting –
Third Edition with Alex Anderson,
Finish It with Alex Anderson,
Kids Start Quilting with Alex Anderson,
Alex Anderson's Baby Quilts with Love,
Hand Quilting with Alex Anderson,
Shadow Redwork with Alex Anderson,
Alex Anderson's Hand and Machine Applique,
Machine Quilting with Alex Anderson,
Paper Piecing with Alex Anderson: 7 quilt Projects –
2nd Edition,
Rotary Cutting with Alex Anderson, one of the Super Simple Quilts series,

or, in keeping with modern trends

Super Simple Jelly Roll Quilts.

Wouldn't you say that Alex Anderson is a prolific author who can help answer any question a quilter may have? Don't you know someone who's library could be made more complete with a volume or two from Alex Anderson? Bring your friends and neighbors to spend an afternoon with Westside Quilters and Alex Anderson on Sunday, April 14th from 2:00 to 4:00 p.m. at University Synagogue in Brentwood.



We'll be needing volunteers to assist on Sunday, April 14.

What we fortunately don't have to do is set up the meeting room since we will be using the University Synagogue sanctuary with permanently installed seats. (You all have a surprise in store when you see the magnificent floor to ceiling red stained glass windows.)

We will need help **giving parking directions, registration, ushering in the sanctuary, manning the Philanthropy, Membership and other display tables**--we'll ask for specific help in March as we determine our exact requirements.

We'll be in touch with volunteers in early April as we determine our exact requirements



Small quilt made using Alex Anderson's Redwork Romance Collection

SEE YOU AT "AN AFTERNOON WITH ALEX ANDERSON" ON APRIL 14, 2013

OUR GUEST PRESENTERS *and* TEACHERS



"Photo courtesy of Ellen Katz of www.fileunderfiber.blogspot.com

URSULA KERN

Workshop 1

Friday , April 5

Curves and Movement

Registration is open

Workshop 2

Saturday, April 6

Color Designs for Quilts

Registration is open

Born in 1942 in Basel, Switzerland, **Ursula** studied at the Schule fur Gestaltung Basel (Basel School of Design), specializing in drawing and textile design. She has completed commissioned textile works across Europe, including major works for churches and corporations. Her honors and prizes are too numerous to mention!

For WQ, Ursula will teach two separate workshops, each limited to 12 students. "*Curves and Movement*" teaches how to create curves and movement by stripes and similar long shapes. Ursula will teach you to scribble-draw, sketch and use glue and translate these exercises into quilt designs.

The second workshop, "*Color Designs for Quilts*" teaches you how to invent color designs by yourself or inspired by drawings, pictures or photos. You'll learn to compare composition possibilities (amount and display of color, for instance). You'll learn to pop up and to calm your color selections and to adapt your designs to traditional or invented blocks/formats

PAM HOLLAND

Workshop

Friday, May 17 , *Drapplique and Illustrated Quilting*

Registration now open.

\$65 fee (members only)

\$5 discount if fee and form are received by April 17

General Meeting

Saturday, May 18, *My Life as a Traveling Quilter*

From Aldgate, South Australia, Pam Holland wears many hats--quilter, quilt designer, pattern designer, fabric designer, photographer, illustrator, film maker, judge, author. She believes in "taking quilting just one step further." In her own words, her myriad of*interests include designing and teaching.... in no particular order. I get to travel the world, teach and share my knowledge with others-- what a treat. I like writing, photography, quilting, illustrating and travel.*"

One workshop attendee describes her "*Pam Holland is an artist with a wonderful perspective. Her work is never entirely predictable, and doesn't fit into "Normal" or "Average" as far as quilts go ...*"

Pam believes that "*Artists are inventors, shaping the new from the already established. Some of my ideas about quilts come to me through the whisperings of ancestors and unknown/unseen muses.*" Other inspiration comes from "*nature, my photography, my experiences in travel and the light in my expression as I see the world as a very special place.*"

Pam leads many quilting travel adventures. Just Google her on the web and you will be surprised at the great variety of exciting tours and cruises she leads. It makes you want to buy a ticket and hop on a plane to join her for her next adventure!

Perhaps the next best thing will be to attend her workshop and presentation in May.



UPCOMING PROGRAMS

Workshops open for registration:

May and June workshops are open for registration on March 27.

To Register:

At the **WQ website**; choose *Calendar* and scroll down to individual workshops. See the link to the Workshop Registration Form (which you can fill in on-line and then print) and the supply list. **First, please email Programs@WestsideQuiltersLosAngeles.org of your intent to attend a workshop.** See the **workshop no-refund policy (substitutions allowed) shown on the Workshop Registration Form.** WQ will hold your space at the workshop for **14 days** to allow time to mail Workshop Registration Form and payment to the WQ post office box. For last-minute registrations, contact Program Co-Chairs. Credit cards/debit cards now accepted. Note Early Registration discounts available 30 days or more before workshops

WQ Meeting and Workshop locations and costs:

Quarterly meetings: WQ members attend at no charge. Non-members are welcome for a \$10.00 guest fee.

Beginning May 18, we will meet at St. John's Presbyterian Church, 11000 National Blvd., at Military (3 blocks East of Sepulveda), Los Angeles, CA 90064.

Workshops: Fees vary. Note Early registration discount above. Non-members pay a \$15.00 surcharge.

Workshops are held at various locations: the Westside Pavilion Community Room, St. Andrew's Lutheran Church, St. John's Presbyterian Church.

April 5 Friday	Workshop	Ursula Kern	<p><i>"Curves and Movement"</i></p> <p>This famed Swiss teacher shares design concepts and how to create the illusion of curves and movement</p>
April 6 Saturday	Workshop	Ursula Kern	<p><i>"Color Designs for Quilts"</i></p> <p>Create small fabric collages of your own color designs inspired by drawings or photo</p>

Please note that this quilt is not necessarily the subject of Ursula's workshop



**April 14
Sunday**

Fundraiser

ALEX ANDERSON



An Afternoon with Alex Anderson

- University Synagogue, Brentwood
 - **Tickets \$25.00 fully tax-deductible**
-

May 17
Friday

Workshop

Pam Holland

Drapplique and Illustrated Quilting

Registration now open.

\$65 fee

*\$5 discount if fee and form
are received by April 17*



You will learn to draw on fabric and to draw with the sewing machine. In this class you will trace the apple tree image onto fabric, color it and quilt it in this amazing way. With careful preparation you will achieve this effect. Pam will guide you through the correct techniques of Drapplique (Drawing/appliqué) You will learn a great deal about quilting and go home with a wonderful small quilt.

May 18
Saturday

GENERAL MEETING

PAM HOLLAND

My Life as a Traveling Quilter

June 7
Friday

Workshop

Nancy Ota

Sashiko

Registration now open.

\$50 (includes \$5.00 material
fee)

*\$5 discount if fee and form
are received by May 7*



Learn the basics of Sashiko from a master and learn how to decorate with this traditional stitch. This is Sashiko with elegance and style. The materials kit (included in the registration fee) includes everything you need.

August 16
Friday

Workshop

Sharon Schamber

Basic Corners, Borders, and Blocks

August 17
Saturday

GENERAL MEETING

SHARON SCHAMBER

My Life as a Quilter

September 18
Wednesday

Workshop

Jenny Carr Kinney

Quilting Designs From the Past

October 11
Friday

Workshop

Sue Rasmussen

Curved Paper-Pieced Flying Geese

October 12
Saturday

GENERAL MEETING

SUE RASMUSSEN

A Desperate Housewife's Quilt Journey

MEMBERSHIP Luann Jaffe

We will have a Membership table at the April 14 Alex Anderson fundraiser, and we will offer new members a few extra weeks' participation if they join then. These memberships will count for the 2013-2014 membership year.

Membership benefits include the monthly newsletter and frequent news bulletins, attendance at quarterly meetings at no charge (visitors pay \$10.00), workshop registration at member rates (non-members pay a \$15.00 surcharge), and Guild discounts at several neighborhood retailers including Sew Modern. We believe we offer an unparalleled line-up of speaker and workshop programming.

You can access the membership form on our website, WestsideQuiltersLosAngeles.org.

Questions? E-mail me at Membership@WestsideQuiltersLosAngeles.org.



April 1	Pepper Libow
April 6	Lita Greenberg
April 7	Glenda Crump
April 15	Jody Brkich
April 22	'Ron Tapp

Hello Everyone!

How did March arrive so quickly? As the old saying goes, "time flies by when you are making art"or at least that is what I say!!

I want to share my latest art news with you, as 2013 is going to be an amazing year for me. I am very happy to announce that I have a **new re-designed WEBSITE and (for the first time) a BLOG** for you to check out.

I have been working hard in recent weeks putting it together; with the able help of my personal (all in the family) web designer, my daughter Brit. She has been a great teacher and mentor. She was convinced I was too old to learn new tricks and I have to say I have learned a lot. So many "Thank You's" coming her way from me. We have been burning up the digital air between LA and NYC.



Coming April 2nd, I will be one of 21 featured artists in a new book called: [Art Quilt Portfolio: People and Portraits: Profiles of Major Artists, Galleries of Inspiring Work](#) by Martha Sielman (Lark Publishing). In it you will find an interview of me and 6 of my portraits. I am excited and honored to be part of it. I look forward to "seeing you" on my website and blog!

Website/Blog: www.sherrykleinman.com

PHILANTHROPY/EDUCATION

Peggy Belcher-Dixon



WQ PHILANTHROPY REPORTED IN MARCH

Sherry was so inspired by our Guild's **Comfort Heart Pillows Project** for the **Cancer Community--Benjamin Center in West LA** that she got together a group of her friends to make more pillows for recovering breast cancer patients—they made 27! They are part of *Las Fortunas*, a group of friends who get together to participate in charitable projects.

Sherry used fabric from her own stash and sewed the heart shaped pieces together ahead of time. Sitting on her living room floor surrounded by many bags of stuffing, a group of 8 friends happily stuffed and sewed them together.

When **Sherry** arrived at the Cancer Community Center with two large plastic bags she was welcomed with wonderful comments from those in the waiting room--to **Sherry's** surprise they knew exactly what she had in the bags! A cancer recovery group was meeting later that day and the pillows were made available for members of the group to choose one to take home.

Sherry encourages others to dig into their stash, gather friends for an old fashioned get-together and create more comfort heart pillows. They are very much appreciated and Sherry and her friends are planning to make even more as well as much-needed **fleece chemo blankets**.

A PHILANTHROPY MORNING

Dozens of Ideas Offered at March 9 Philanthropy Seminar

Westside Quilters presented a 3-hour informal meeting at our Program Co-Chair's home on Saturday morning, March 9. Free to WQ members, we had 27 enthusiastic participants. The idea was to learn about easy, yet creatively satisfying, projects suitable for charitable quilts. It was hard to keep track of all the ideas flying around, but this is an attempt to share some of them.

Luella Fournell, the owner of the now-closed Luella's Quilt Basket and well-respected teacher, talked about many charitable projects – especially quilts for the Lutheran World Relief challenge to collect 500,000 60" x 80" quilts in this calendar year. **Luella** spearheads this project at her local church.

Her suggestions included:

- Use old tops or blocks or half-finished projects and add sashing or borders;
- Tie quilts with crochet cottons using a small needle (larger needles for yarn make holes in cotton fabric); tie no more than 10" apart, although closer is preferred.
- Luella often does a machine-sewn binding, cutting the backing a few inches larger than the top, then folding over the backing to the front, tucking under the raw edge and top-stitching.
- Many of Luella's favorite quick patterns involve rectangles, for instance, "Fantastical Zoo" by Sara Gallegos as printed in the special magazine *Quilters Newsletter Magazine's Best Fat Quarter Quilts of 2012*. (Google "Sara Gallegos Fantastical Zoo" and get the QNM website, scroll down a few photos.)



Sylvia Davis, WQ member and well-known teacher and lecturer, distributed written instructions for *Jo's Flippy Strippy 12"* (A Quilt-As-You-Go), and the *20-Minute Bindless Baby Quilt*. **Pam Overton** figured out that Sylvia's Flippy Strippy 12" block could easily be converted to a 12" x 13" block suitable for a Wounded Warrior quilt, 48" x 78" (4 squares x 6 squares). **Sylvia** sometimes "tacks" instead of quilts or ties – zigzag in place using 0 stitch length for 5 or 6 stitches, then cut threads.

A quick large zigzag design quilt was shown by **Barbara Weigold**. Blocks are sewn quickly in a unique way to make half-

square triangles. (See the Missouri Star Quilt Co. You-Tube "How to Make a Chevron Quilt Using 10" Fabric Squares.") *Comfort Quilts from the Heart*, a 2008 book by Jake Finch, was shown by **Barbara** and donated to WQ. This book has 12 quick projects, including wheelchair quilts, bed shawl, a walker bag. It will be with the Philanthropy chair for WQ members to borrow.



WQ-member **Maureen Gardner** summarized her experiences making group charity quilts. She talked about common skill levels, choosing colors, providing block designs which can be adjusted to size with sashing, matching abilities to tasks; ie *"the best quilters in the group should quilt, the best binders should bind"*.

Prima Casetta brought photos of some of her charity quilts. She has made "Disappearing 9-Patch" quilts [see below]. **Stephanie Wexler** recommended the "Rail Fence" pattern which with the use of "Snowball" corners, gives a diamond accent; see the Missouri Star Quilt Co. You-tube "Make an Easy Fence Rail Diamond Quilt".

Tanya Heldman said that she had patriotic motifs in her new Robotic long-arm quilting system. **Tina Nord** distributed a version of the "Broken Star (Carpenter's Wheel)" pattern as customized by Australian quilt teacher Jenny Bowker. This was recommended as a quick-to-assemble design with an innovative method of creating half-square triangles.

Keiko Tapp, our WQ member, described her family's devastation as a result of the 2011 Japanese tsunami. She has dedicated herself to make a quilt for every family in her home area. She's completed about half of the hundreds of quilts needed. She often uses the "Disappearing 9-Patch" block. (One set of directions can be found at www.psqquilt.com. Also the Missouri Star Quilt Co. has a You-Tube on this block.) **Prima** and **Luella** offered hints on the best use of fabric in composing this block: Use the same color for all center blocks; remember that the center block gets quartered in the process; use large prints in the outside corners

Philanthropy Chair **Peggy Belcher-Dixon** circulated the photo albums of **Arlene Zobrist** of Wounded Warriors. She has photographed all donated quilts. Peggy offered some good news: Arlene has enlisted the help of DHL, the international air courier, to provide *free* delivery services for future shipments of Wounded Warrior quilts.

OUT AND ABOUT With Sally Madigan

IT'S SPRING, AND THERE ARE QUILT SHOWS AND COMPETITIONS POPPING UP!

Seven Sisters Quilt Show

April 27 -28, 2013

This show is held at the Madonna Inn in San Luis Obispo.

Maybe it's a little far away, but go to their website and you will find lodging information along with a long list of vendors.

Of course, there will be many quilts to see, too.

Check out their website:

www.aqgccs.org

Quilting In the Valley 2013

May 4-5

The San Fernando Valley Quilt Association and the Valley Quilt Makers Guild join to present this show at the AirTel Plaza Hotel in Van Nuys. Featured Quilter is Shirley Vangerov; there's a Quilt Auction on Sunday afternoon. More info on their website:

www.quiltinginthevalleyshow.com

Quilting in the Pines

May 18, 2013

A Lilac Festival and a quilt show, what a treat!

In the Frazier Park area, about 1 1/2 hours north of LA, both are yours at this show put on by the Pine Mountain Scrappers Quilt Guild.

Search www.pinemountainclub.net,

Quilting in the Pines, or call Kathy Weinstein at

310/542-5844 f

or more information.

Do You Have Quilt to Enter Into A Competition?

Entry information for quilting and other creative arts competitions at the California State Fair, July 12-28 in Sacramento, is available at creativearts@calexpo.com, or at www.bigfun.org. The entry form deadline is April 19th, but actual items are not due to the fairgrounds until May 18th. There's a 2013 Competition Handbook, and oodles of info to get you started on the websites.

AND EVEN MORE TO KNOW!

Mood Designer Fabrics has moved to 645 So. La Brea, just south of Wilshire Blvd. Shop for fabrics, take classes, and simply absorb the atmosphere that inspires Project Runway contestants. Mood's website is www.moodfabrics.com; phone: 323/653-6663.

www.Creativebug.com is a website which has video quilting workshops featuring some familiar names: Kaffe Fassett, Liza Lucy, Sue Nickels and Anna Maria Horner and others. This site also has options for paper, yarn, jewelry and printmaking.

Knitters, How's Your Yarn Supply? Now, there's a truck stocked with yarn and knitting supplies that will satisfy any and all of your knitting needs. Check out their website for more information and a calendar: yarnovertruck.com

Camp Watch-a-Patcher July 7-11, 2013.

Registration now open

Go to the website: <http://campwatchapatcher.org>

Teachers include Frieda Anderson, Karen Brow, Kathy Brown, Nancy Prince, Darlene Zimmerman and many others.

It's possible to register for the full session or for part of it.

It's not too late to plan for summer quilting!

Fowler Museum at UCLA

Resplendent Dress from Southeastern Europe:

A History in Layers

March 10 – July 14, 2013.

The clothing of young women in central Europe became, over time, a presentation of their background and their availability as a bride.

This exhibit includes fifty ensembles from nineteenth- through twentieth-century, most from the Fowler's collection—

plus one hundred individual items including aprons, vests, jackets, and robes.



Their website is: www.fowler.ucla.edu

A NEIGHBORLY QUILT CALENDAR

You may be interested in attending meetings of our neighbor guilds, as we welcome quilters from other guilds. Here are the meetings, workshops and events of note through June 2013. This information is current when we went to press, but please check with the appropriate guild before you attend a meeting to check meeting details.

See also the Event Calendar at the Southern California Council of Quilt Guilds website: www.sccqg.org.

Glendale Quilt Guild	www.GlendaleQuiltGuild.org . Contact: Info@GlendaleQuiltGuild.org
San Fernando Valley Quilt Association	www.SFVQA.org . Contact, go to website, then Committees and link to Program
Santa Monica Quilt Guild	www.SantaMonicaQuiltGuild.org . Contact: Info@SantaMonicaQuiltGuild.org
South Bay Quilters Guild	www.SouthBayQuiltersGuild.org . Contact, go to website, Contact Us and link to Program VP
Valley Quiltmakers Guild	http://www.ValleyQuiltmakers.org . Contact: VQG@ValleyQuiltmakers.org

DATE	SPEAKER/TEACHER	GUILD
April 3	Guild Sewing Evening	Santa Monica
April 5	Ursula Kern, Workshop: <i>Curves and Movement</i>	Westside Quilters
April 6	Ursula Kern, Workshop: <i>Color Designs for Quilts</i>	Westside Quilters
April 6	Sally Collins , Workshop " <i>Precision Piecing</i> "	Glendale
April 7	Sally Collins , Workshop " <i>Pieced Baskets</i> "	San Fernando
April 8	Sally Collins, Presentation " <i>Quality Workmanship and How to Achieve It</i> "	San Fernando
April 10	Sally Collins, Presentation " <i>Borders, Bindings, and Edges</i> "	Glendale
April 12	Pat Speth, Nickel Quilts " <i>Small Wonders</i> "	Valley Quilters
April 13	<i>Meet the Teachers and Vendor Mall</i> Carson. See below for more details.	Southern California Council of Quilt Guilds
April 14	An Afternoon With Alex Anderson	Westside Quilters
April 16	Bobbi Finley, Trunk Show " <i>Reinventing Historic Quilts</i> "	South Bay
April 17	Bobbi Finley, Workshop " <i>Making a Tile Quilt Block</i> "	South Bay
May 1	Bobbie Finley, Presentation " <i>Tile Quilts</i> "	Santa Monica
May 2	Bobbie Finley, Workshop " <i>Tile Quilts</i> "	Santa Monica
May 8	Anelie Belden, Presentation " <i>Dresden Dance</i> "	Glendale
May 11	Anelie Belden, Workshop " <i>Stitch-'n-Flip</i> "	Glendale

May 9	General Meeting	Valley Quilters
May 12	Rami Kim, Workshop "The Fifth Dimension"	San Fernando
May 13	Rami Kim, Presentation "Asian Design in a Modern World"	San Fernando
May 14	Anelie Belden, Presentation "Modern Dresden"	South Bay
May 18	Anelie Belden, Workshop "Jelly Roll/Split Blade Dresden"	South Bay
May 17	Pam Holland, Workshop "Drapplique"	Westside Quilters
May 18	Pam Holland, Presentation "My Life as a Traveling Quilter"	Westside Quilters
June 5	TBD	Santa Monica
June 7	Nancy Ota, Workshop "Sashiko"	Westside Quilters
June 14	Karen Brow, Workshop "Go Fetch"	Valley Quilters
June 15	Nan Maples, Workshop "Big Bag Workshop"	Glendale

Meet the Teachers and Vendor Mall

Saturday, April 13th
 Carson Community Center
 801 E. Carson St., Carson, 90745 from
 10am to 2pm.

This is the second annual **Meet The Teachers Quilt Show** sponsored by the *Southern California Council of Quilt Guilds*

Teachers from all over California will be talking about their **classes** in individual booths.

There will also be **vendors**.

Just like a quilt show, but entrance is free of charge.

Plan on attending - it's a great opportunity to scope out which teachers you might like to have WQ feature in the future.

Box lunches at the event are available for purchase for \$11.00 and include a choice of sandwich, side salad and dessert. Drinks are an extra \$2.00. Lunches must be ordered and prepaid by April 5th,

If you are interested, please contact our SCCQG Rep Sally Wright at Sally@sallywrightquilts.com.

New Officers for 2013-2014

Already April is almost here and we are just one month away from WQ elections for the 2013-14 year!

As Vice President, my job is to form a **Nominating Committee** and, as a group, put together a slate of officers for the coming year to be elected at our May General meeting.

Some of our wonderful Executive Board will be continuing, but some will be "termed out" and will need replacements. More on that soon, but in the meantime, please take a few moments this month to reflect on how much you enjoy Westside Quilters, our workshops and programs, and about those who give of themselves and their time to offer you these opportunities.

Wouldn't you like to be part of that? Please think how you can step up and offer your time and ideas as a member of our Board.

Sally Wright, Vice President and Nominating Committee Chair



Treasurer's Report--Aileen Cooke

Amended Report for February, 2013

Opening Balance January 29, 2013		\$6793.92
INCOME		
Amazon (1/31)	12.46	
Workshops	935.00	
Dues	50.00	
Fundraiser sales	1,325.00	
Guests	60.00	
TOTAL INCOME		\$2382.46
EXPENSE		
General Meeting	(814.80)	
Square Up fees	(\$2.25)	
Fundraiser expense	(218.23)	
Workshop expenses	(1,420.48)	
Parking chits	(30.00)	
CA state filing	(20.00)	
Workshop materials	(285.00)	
TOTAL EXPENSES		(\$2,790.76)
Closing Balance February 25, 2013		\$6,385.62



A Few Words of Advice!

Dear Quilters,

After I broke my arm, I was forced to eat with my non-dominant arm.

A recent Berkeley Wellness article recommends this as a means of weight loss. Aside from obvious limitations in most activities, including sewing, this did work for me.

I had to take more time chasing food on my plate and that meant I felt full with smaller helpings. Now that I have my right arm back (with limited range of motion), I might still eat with my left hand or I'd better chew slowly to keep the 5 pounds off.

Happy to be sewing again! Aileen

Report for March. 2013

Opening Balance February 26, 2013		\$6385.62
INCOME		
Amazon (2/28)	31.52	
Workshops	475.00	
Fundraiser sales	1,075.00	
TOTAL INCOME		\$1581.52
EXPENSE		
General Meeting	(210.00)	
Fundraiser expense	(547.63)	
Workshop expenses (3/9, 4/5, 4/6)	(660.00)	
St. Albans donation	(200.00)	
Misc	(152.40)	
TOTAL EXPENSES		(\$1770.03)
Closing Balance March 22, 2013		\$6,197.11

**This has nothing to do with anything
except that Aileen loves cats
(and especially cat fabric!)**



Minutes of the Westside Quilters Quarterly Meeting

February 9, 2013

The general meeting of the Westside Quilters "WQ" was held on February 9, 2013 at Saint Alban's Episcopal Church in Westwood.

Introductory Remarks: *Tina Nord*, President called the meeting to order at 10:00AM. She welcomed everyone and reminded members to sign up for Show & Tell, the Philanthropy Workshop on March 9th, and Bookmark Distribution for the Alex Anderson Fundraiser. Tickets are on sale for \$25.00. She thanked the Hospitality Volunteers and **Stephanie Wexler Crew**.

Minutes: The motion to approve the minutes of the October 13, 2013 general meeting was passed unanimously.

Guild Business:

Focus Demonstrations: Tina thanked **Madhu Mavia** and **Dawn Sliskovich** for presenting the hand appliqué demonstration before the meeting.

Major Announcements: Tina announced that this would be the last WQ Meeting at Saint Alban's Episcopal Church. The new meeting location is Saint John's Presbyterian Church at National and Military Avenue. The rental fee is \$200 vs. \$100. There are no steps and 150 parking spaces.

Workshop scheduling problems continue at the Westside Pavilion and alternative locations are being sought. Attendees are asked to confirm back to Programs.

Treasurer's Report by Aileen Cooke

Aileen reported that WQ's bank balance as of January 28, 2013 is \$6,793.92, and was \$5,561.00 on February 6, 2013.

Membership Report by Luann Jaffe

Luann reported that WQ currently has a total of 81 paid members.

Karen Rakita from South Bay Quilt Guild reminded members that SBQG Bookmarks announcing the Guild Show and a \$1.00 discount were placed on the chairs.

Two free tickets were won by **Carol Gentile** for the SBBQG Show.

Alex Anderson Fundraiser

Tina stated that ticket sales are online and that bookmarks are being distributed by adoption to avoid duplication. Contact **Marianne Simpson** for additional bookmarks.

Volunteers will be contacted in early March for specific help.

SCCQG Membership

Sally Wright attended the January Council Meeting of the Southern California Council of Quilt Guilds. The featured subject was Membership. WQ will print and distribute Referral Cards to

encourage new members. The cards will be available at the May Meeting.

Philanthropy Report by Peggy Belcher-Dixon

Peggy thanked "Quilts from the Heart" for their contribution of additional heart pillows.

Programs Report by Roberta Walley & Sharen Whelan

Roberta gave an update of the free members only workshop on Philanthropy. The workshop location will be at **Roberta's** home from 9:30am-12:30pm on March 9th.

May and June Workshops will open for registration at the end of February.

Showcase Speaker-Tanya Heldman

Tanya is a WQ member and has done long-arm quilting for philanthropy quilts and clients for several years. She shared several quilts with her long-arm quilting designs and gave several suggestions for successful results.

Show and Tell

Sally Wright - Hot Couture, Eagle Has Landed & Sculpture;

Virginia Marshall - Habitat House;

Luann Jaffe - Jelly Roll;

Stephanie Wexler - Stash-Scrappy;

Tina Nord - Orange Circles & 1001 Scraps;

Nancy King - Wounded Warriors;

Betty Hampikean - 1001 Patches & Egyptian Kaffe Fassett Design;

Pepper Libow - Valentine's Child's;

Margot Slocum - Serendipity;

Maureen Gardner - Razzel Dazzel;

Daisy Marks - The Blue Collection;

Sue Correl - Lenore Crawford Project; and

Sherry Kleinman - Alone/Together.

Speaker - Lenore Crawford

Roberta Walley introduced **Lenore Crawford**. Lenore presented an overview of her quilting history and techniques. She explained the similarities and differences in several of her quilts on display.

Tina adjourned the meeting at 12:20pm.

The next WQ general meeting will be May 18th with **Pam Holland** as presenter.

Minutes of the Executive Board Meeting

February 23, 2013

The meeting of the Executive Board of Westside Quilters "WQ" was held at the home of **Sally Wright**. **Tina Nord**, President called the meeting to order at 10:08AM.

Minutes

Sally Wright moved and **Roberta Walley** seconded the motion to approve the minutes of the January 19, 2013. Motion passed.

President's Report by Tina Nord

Members of the Board of Directors will receive the DVD "Why Quilts Matter" as a gift from WQ and an extra copy will be ordered.

Sally Wright will have new business cards printed with referrals for guest. The cards will be available for the April Meeting. Two additional quilt frames have been purchased.

A \$200.00 donation will be made to Saint Alban's. A motion was made by **Peggy Belcher-Dixon** and seconded by **Luann Jaffe** to approve two contracts with Saint John's Presbyterian Church. A speaker system will need to be rented or purchased. **Sally Wright** moved and **Sally Madigan** seconded a motion to approve contracts with Saint John's Presbyterian Church for the May, August, October, 2013 and the February 2014 General Meetings. Motion passed.

Vice Presidents's Report by Sally Wright

Nominating Committee: Sally as VP serves as Chair of the Nominating Committee. She requested that **Roberta Walley** be appointed to the Committee to provide support for the Program position. **Peggy**, as outgoing Philanthropy Chair volunteered to serve on the Committee. The membership will receive the Nominations Committee slate in April and will vote in May.

Road to California features high hanging quilts in the entrance to the Exhibit Hall. Quilt Guilds can apply to have their quilts featured. If selected, at least 34 Quilts must be submitted and must be at least 72 inches long. Sally Wright will send an email blast to determine interest.

Membership Report by Luann Jaffe

More volunteers for guests are needed at the general meetings. There were seven visitors at the last meeting.

Treasurer's Report by Aileen Cooke

Workshop expenses will be included in the next report. The balance on February 6, 2013 is \$5,561.00.

Newsletter Report by Sally Madigan & Janet Thornber

The deadline for the February newsletter is today, February 23rd. The deadline for the April newsletter is March 23, 2013.

Philanthropy Report by Peggy Belcher-Dixon

The free Philanthropy Workshop is March 9th. There are 19 registrations. Several volunteers are scheduled to make presentations.

The Wellness Center/Benjamin Center will be added to the website as recipients for WQ philanthropy quilts.

Programs Report by Roberta Walley & Sharon Whelan

The Program List is confirmed through next year. **Ursula Kern** is coming from Switzerland in April for two WQ Workshops on April 5 and 6. **Pam Holland's** workshop is May 17th. She will be hosted by **Sally Wright**. The St. Andrew's Lutheran Church Contract is email approved. The May/June Workshops will open for registration in March.

The SCCQG Meet the Teachers meeting is April 13, 2013 in Carson and will feature teachers of workshops.

Alex Anderson Fundraiser

Aileen is estimating a \$2,000 profit. **Sally Wright** will purchase ribbons to be added to Executive Board Member badges. Bookmarks will be mailed to outlying areas. Volunteers will be contacted for specific jobs.

Old Business - none

New Business - none

The next meeting is Saturday, **March 23, 2013 at 10:00am**.

The Executive Board Meeting was adjourned at 12:15pm.

Submitted by,

Brenda Gottfried,
Secretary

Next Executive Board Meeting

The next meeting of the Executive Board will be held on

Saturday, April 27

All members of Westside Quilters are welcome to attend with prior notice to

Pres@WestsideQuiltersLosAngeles.org.



Our Mission

A new kind of guild organized for educational and charitable purposes; to promote cooperation and the exchange of ideas among quilters; to instruct members in methods and techniques of traditional and contemporary creative quilting; to serve minigroups and their philanthropic endeavors within the community; to inspire personal achievement.

Officers

President	Tina Nord
Vice President	Sally Wright
Secretary	Brenda Gottfried
Treasurer	Aileen Cooke
Membership	Luann Jaffe
Newsletter Co-Editors	Sally Madigan
	Janet Thornber
Philanthropy/Education Program	Peggy Belcher-Dixon
	Roberta Walley
	Sharon Whelan
Website Manager	Sally Wright

Appointed Positions

Nancy Sharpe	Hospitality
Stephanie Wexler	Meeting Set-Up
Tanya Heldman	Photographer

Mailing Address

Post Office Box 641925
Los Angeles, CA 90064

F.E.I.N. 27-3145733

(Federal Employer Identification Number)

Website

www.WestsideQuiltersLosAngeles.org

Facebook We're on Facebook. Check out the banner on the WQ website home page (lower center).

Amazon There is a boxed message in the lower center of our website home page giving a direct link to Amazon. By using this link, anything you purchase earns a 4% "dividend" paid directly to WQ. *This only works if you enter the Amazon website from the WQ website link.*

IGive.com This is another way to benefit WQ when shopping on the Internet. Here you need to register (the IGive.com logo appears in the lower center on the WQ website home page and links you directly to IGive.com). Over 800 Internet retailers participate (Barnes & Noble, Bed Bath & beyond, Enterprise Rent-A-Car, Lancome to name a few). Follow the instructions at IGive.com.

Non-Profit Status Westside Quilters is tax-exempt from Federal income tax under section 501(c)(3) of the Internal Revenue Code, and classified as a public charity under section 170 of the Code, according to the determination letter dated May 26, 2011 received from the Internal Revenue Service. The effective date of exemption is June 17, 2010. Donations to **Westside Quilters** are fully tax-deductible for individuals and other entities such as corporations, partnerships, trusts; **Westside Quilters** is qualified to accept tax deductible bequests and gifts or transfers of gifts.