



President's Message

I've just returned from my annual trip up to Pacific Grove for a five-day class with Empty Spools at Asilomar. I look forward to this every year as my single most important quilting escape (aside from our quarterly WQ meetings!) and this was my sixth year. The area is, of course, exquisite. The town of Pacific Grove is endlessly appealing with a fabulous quilt shop, Back Porch Fabrics, and the Empty Spools instructors are always first class.

My week with noted Australian quilter Gloria Loughman was fabulous -- a group of 25 of us in a big redwood timber and stone lined classroom spending five whole days with this charming, knowledgeable, creative quilter who can put across color theory, design principles and her own construction techniques. Nothing was held back!

I think the key to traveling afar to seminars is that you have days without the logistical pull of home and family. You are there solely to let your creative spirit flow and, like a sponge, take in the knowledge available to you. There are no distractions. It is also a chance to meet other talented quilters and teachers from all over the U.S. and the world. I always learn from my classmates and dinner companions -- almost as much as I do from my teacher.

Now, I love Asilomar, but there are many other places around California and the rest of the U.S. that offer similar experiences. Art Quilt Tahoe, Quilting in the Desert and Quilting in the Pines in Arizona, the Allegre Retreats in New Mexico, David Taylor's new venture in Steamboat Springs, Colorado to name just a few. You can work on traditional or art quilts -- the teachers are usually varied. None of these are inexpensive, but well worth it to me -- I give up some other things in my life to be able to go at least once each year.

Classes at Road to California, Quilt Festival Long Beach and PIQF are great, but almost all are one day only and fail to give the same kind of immersion experience.

I've come home with the beginnings of a quilt in which (with Gloria's help) I am combining several images of Asilomar from my photos over the years. I hope to share it with you at a WQ meeting soon!

Sally Wright
President of Westside Quilters

PROGRAMS

Thanks to all our wonderful WQ members.... You are always so supportive of our workshops! We bring quilters from all over the United States and beyond here to Los Angeles to inspire, teach and expand our knowledge. They have special skills to share.

Registration is open for **Jennifer Rapacki** on April 21, **Sally Collins** on May 11, and **Linda Schmidt** on June 23. Below is Jennifer's watercolor illustration printed on fabric from a computer image. On Jennifer's website, JenniferRapacki.com, she shows a photo of pansies and then the quilt made after PhotoShop editing. Her workshop, "PhotoShop Elements for Quilters" teaches how to manipulate photos to create pictorial and abstract quilts as well as how to use software for traditional patterns. All you need at the workshop is your PC or Mac and Jennifer will help you download a 30-day free trial of PhotoShop Elements. See the Supply List at the WQ website. This is an intentionally small workshop so everyone will receive lots of personal attention.



The **Sally Collins** workshop is Friday, May 11 (a day before her lecture at our Saturday general meeting). Only a few spots remain!

A quick report on our March 17 workshop with Anelie Belden. Inside Community Room B of the Westside Pavilion we learned all about Anelie's special methods for constructing the Modern Dresden Plate Quilting Block. We laughed, we giggled, and we sewed. Outside the rain poured but inside we were warm and friendly with mini-sandwiches, salads, and a great St. Patrick's Day cake and cookies. You never know what you might miss.....

Happy Easter Happy Passover.

Amy Barer and Roberta Walley, Program Co-Chairs



JENNIFER RAPACKI

Workshop

Saturday, April 21

***"PhotoShop Elements
for Quilters"***

Jennifer left corporate America in 1999 to start her own business in Website Design and Computer Consulting. She is truly a corporate refugee having spent 20 years working as a computer engineer for major corporations: Westinghouse Electric, Lockheed Martin, and Walt Disney Feature Animation. Thus her original website domain name of CorporateRefugee.com. She graduated from Purdue University in 1979 with a Bachelor's degree in Mechanical Engineering and then added an MBA from the University of Phoenix in 1985.

Learning to sew as a child, Jennifer has been working with fabric for over 40 years. Her skills include couture sewing, tailoring, quilting, and home decorating. Because PhotoShop is the primary design tool that Jennifer uses for web design, she also started using PhotoShop as a design tool for her quilts.

With Adobe's release of PhotoShop Elements for home use, Jennifer developed a "PhotoShop Elements for Quilters" class which teaches quilters how to edit photos/graphics and print on fabric. Jennifer also uses Electric Quilt to design quilts.

Jennifer lives in Santa Maria, California.



SALLY COLLINS

Workshop – Friday, May 11
"My Stars"

Lecture – Saturday, May 12
**"Quality Workmanship &
How to Achieve It"**

Sally Collins is an award-winning quiltmaker, teacher and author who has been quilting since 1978 and teaching since 1985. Her quilts range in size from small to wall size and although she is most recognized for her quality workmanship, attention to detail and teaching expertise, her continual love and interest is in the process of quilting -- the journey. Her focus for classes is on quality workmanship, borders and edges or drafting. Her classes are developed to help students advance and improve their own creative and technical skills as well as how to critique and correct their own work.

Sally's book **"Mastering Precision Piecing"** 2006, shares her approach and methods for achieving quality workmanship in any scale, and includes chapters on fabric, color, drafting, design plus seven projects. **"Sally Collins Teaches You Precision Piecing"** 2007 is a DVD on workmanship where Sally shares how she does what she does in great detail with camera close-ups.

Her most recent book, **"Drafting for the Creative Quilter"** 2010 is a drafting reference guide for numerous categories of quilt designs, including grid-based, circular, hexagon, pineapple, 8-pointed star and more. Sally also shares two designing methods and 3 projects. This book is supported by over 500 illustrations.

Sally lives in Northern California. She balances her time conducting workshops, giving presentations and enjoying life with her husband Joe and grand-children.

PROGRAMS

To Register for Workshops Go to the WQ website – WestsideQuiltersLosAngeles.org – choose Calendar and scroll down to the workshop you're interested in to see the link to the Workshop Registration Form (available to fill in on-line) and the Supply Lists. **See the workshop no-refund policy (substitutions allowed) shown on the Workshop Registration Form.** The first instruction is to notify Programs (email Programs@WestsideQuiltersLosAngeles.org) of your intent to attend a workshop. **WQ will hold your space at the workshop for 14 days to give you time to mail in your check and Workshop Registration Form to the WQ post office box. For last-minute registrations, contact the Program Co-Chairs.**

Workshops now open for registration: Jennifer Rapacki – April 21; Sally Collins – May 11; Linda Schmidt - June 23. Always – more workshop details on the WQ website.

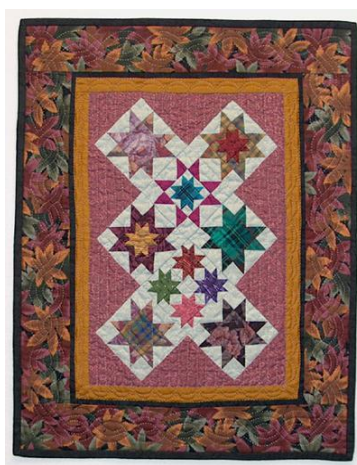
Guild Policies Westside Quilters members attend quarterly meetings at no charge. Non-members are welcome to attend quarterly meetings for a \$10.00 guest fee. Workshop fees vary, based on guild costs. Non-members may attend workshops at a \$15.00 surcharge above the member fee. Workshops are at the Westside Pavilion shopping center Community Room (Pico & Westwood Boulevards); parking fees are included in the workshop registration fee. Supply lists are on WQ website.

April 21, 2012
Saturday

Workshop: **Jennifer Rapacki** – “PhotoShop Elements for Quilters”
Manipulate photos to create pictorial and abstract quilts.
Registration is open. See website, JenniferRapacki.com.
Members \$40; non-members \$55. Fee includes parking.

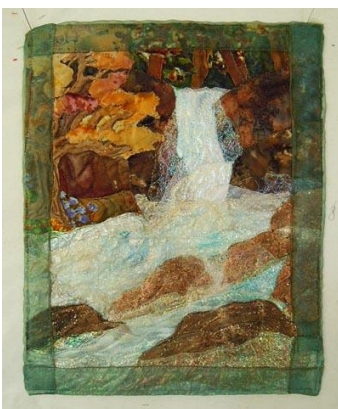
May 11, 2012
Friday

Workshop: **Sally Collins** - “My Stars”
Sawtooth stars in double half-square triangle units. This is a “process” workshop for precision sewing. The pattern can be made in two sizes. Students may bring contrasting fabric and refine their skills without doing the suggested pattern. Accuracy is the focus. Everyone needs this! Registration is open. See website, SallyCollins.org.
Members \$65; non-members \$80. Fee includes parking.



May 12, 2012
Saturday

SALLY COLLINS at General Meeting, 9:30 am to 12:30 pm
Lecture: “Quality Workmanship & How to Achieve It”



June 23, 2012

Saturday

Workshop: **Linda Schmidt** – “Elements in Fabric – Earth, Wind, Fire & Water”
Emphasizing “Earth” with surface design techniques in small landscape project.
Registration is open. Materials fee of \$20 collected in class.
Members \$60; non-members \$75. Fee includes parking.

August 10, 2012

Friday

Workshop: **Judy Sisneros** - “Circle Pizazz”
Updating the ‘snake trail’ block to make it all new again. You’ll like circles.
Registration to open in May. See website, JudySisneros.com.

August 11, 2012

Saturday

JUDY SISNEROS at General Meeting, 9:30 am to 12:30 pm
Lecture: “Stitches of Hope – Cambodia”
Renowned author of ‘Pizazz’ series with trunk show and Cambodia teaching experience.

September 22, 2012

Saturday

Workshop: **Pat Rollie** – “Free Motion Thread Design”
Create contrast, contours and texture using free motion thread designing.
Registration to open in May. See website, SoFineArtWorks.com.

October 13, 2012

Saturday

JULIE SILBER at General Meeting, 9:30 am to 12:30 pm
Respected quilt authority offers perspective on quilt collecting and history.
See blog, TheQuiltComplex.com. **THE BATTY LADY** to provide vendor booth.

November 10, 2012

Saturday

Workshop: **Nick Coman** and decolorant process.

December 2012

SECOND ANNUAL MEMBER HOLIDAY TEA

Coming in 2013 – Lectures & Workshops

February – Lenore Crawford

June – Pam Holland

August – Sharon Schamber

..... and much more

MEMBERSHIP REPORT



Our March 24 Mini-Group Tea was well-attended by WQ members with a variety of sewing, quilting and art interests. We also had some well-established mini-group members with lots of information about forming new groups and

how to become successful. Member Roberta Walley related stories of her four (!) active mini-groups. [See the article below for more details.]

We're nearing the end of our current fiscal year (May 31) which means that we're about to begin a new year by collecting membership renewal dues. We'll have membership renewal forms up on our website beginning May 1 and handy forms available for your convenience at our May 12 general meeting.

We ended our first year with 77 members, and for this year, 2011/2012, we have 90 members. We should be able to add at least 10 new members to make 100 in 2012/2013, don't you think? Thanks to all for making this year such a good one and we look forward to another great one.

Luann Jaffe, Membership Chair

MINI-GROUPS: SOME IDEAS TO THINK ABOUT

On a bright Saturday afternoon last month, our Membership Chair Luann Jaffe graciously welcomed into her home a group of WQ members interested in forming mini-groups. Everyone enjoyed some yummy treats, and then discussed a number of ideas for forming and maintaining vibrant mini-groups. The most successful groups have members with similar interests and goals, yet are able to be flexible and keep a sense of humor while they set some ground rules.

Mini-group members do everything from sharing small trinkets or fat quarters picked up on travels, to sharing quilt patterns, to instructing each other on techniques, to collaborating on craft projects.

First, determine the goals of the group. Will its focus be philanthropic, educational, social or maybe personal artistic development?

When and where will the group meet? How often and how long? How will hostess responsibilities be handled? (Sign-up sheets are recommended.) Will members who do not have the space to host a meeting share the responsibilities with another member who does have the space, or will they be the ones to set up shopping trips or visits to museums? Will the meeting include a meal? Members could decide to "brown bag," with the hostess providing drinks and desserts, or maybe every member is a great cook and will vie for the privilege of cooking for everyone.

Once these meeting basics are worked out, your group will want to discuss what kind of projects to work on. Will members focus on a particular style of quilting or will they experiment with a variety of techniques or styles? And, will members be working on projects at the meetings, or will they be bringing in work they've done, looking for advice and applause? Most experienced mini-group members suggested that sewing machines not be involved in meetings.

Last, or maybe sooner, choose a name.

We know that a few mini-groups were formed as a result of our meeting. If you are more interested now than you were before, please contact the Membership Chair.

NOMINATIONS COMMITTEE

Nominations are moving along and we should have the full slate ready shortly. The By-Laws state that the membership should be notified by May 1 to be ready for voting at our May general meeting. We're on-track to do that. Watch your email – and the slate also will appear in the May newsletter. We are an awesome group of quilters. Stay tuned.

Aileen Cooke, Vice President & Nominations Committee Chair

BY THE NUMBERS: WORKSHOP FEE REFUNDS

By Tina Nord, Treasurer

Our guild's goal is to break even on workshop expenses. No profit. No loss. We determine workshop fees based on estimated expenses and estimated attendance. The process often is a guessing game. We try to contract with local teachers as well as out-of-town teachers to minimize travel expenses. As your Treasurer boasted in a recent newsletter, we have been extraordinarily successful (lucky?) in coming in close to break even on most of our workshops.

Then February happened. We had two early cancellations and refunded those registrations because we thought we would sell out. Three more cancellations occurred and we felt obligated to refund those fees too. Then we lost money on the workshop!

Our stated workshop refund policy is on the Workshop Registration Form. The final instruction (#4) states: "Please read the no-refund policy carefully, and sign this form before mailing." This no-refund policy, as printed on the Form: *"Refunds of paid registration fees will be made only if the cancelled space can be filled. We will maintain a waiting list. If we*

cannot fill the space by our waiting list, you may designate a friend to take your place. If a replacement for your space is not found, your registration fee will be forfeited."

In the past, when a workshop profit was anticipated, we tried to be generous about refunds in the interest of good will. Members are asked to register months in advance. We know that life intervenes – from weddings to funerals, from vacations to illness. However, our recent experience has taught us that we need to adhere strictly to our stated policy. We aren't able to subsidize workshops for the benefit of a few at the sacrifice of the entire membership.

We can't emphasize enough that members are free to find a friend to take their place when even a last-minute cancellation is necessary. The member and friend can settle the money between them – the guild doesn't need to be involved. A substitute can even be a non-WQ member. We ask only that the Program Co-Chairs be notified of any substitution as soon as possible.

The Executive Board has discussed the issue of workshop refunds and endorses the original no-refund policy as above. This will allow WQ to continue to offer a variety of high-quality workshops with the support of the entire membership.

A SAD NOTE – TED SMALL

We report with sadness that Ted Small, the husband of WQ member Kate Small, passed away in February at the age of 100. Kate and Ted enjoyed 72 years of marriage. From the obituary in the *Los Angeles Times*: A test pilot, Ted moved to Los Angeles from Michigan in 1933 to work at Douglas Aircraft. He was commissioned as a Second Lieutenant in the Army Air Corps in 1935, served overseas combat duty, attained the rank of Lieutenant Colonel, and participated in the development of Lockheed's P38. For many years Ted was Director-At-Large of the Rancho Park Golf Club where he mentored a younger generation of golfers. He leaves behind his wife Kathryn, three children and grandchild, "and one very large pair of shoes to fill."

PHILANTHROPY AND EDUCATION

WQ's members have reported a variety of philanthropic activities, including constructing quilts and lots of volunteer quilting and teaching activities, so far for 2012. Please continue your wonderful work and remember to prepare to share your work and activities during Show and Tell at the May General Meeting.

In the meantime, it is important that you keep us informed of your philanthropy endeavors so that we may maintain records of your personal and/or your mini-group's philanthropic and educational/ mentoring endeavors. You name, Philanthropic Agency Name and Contact Information and Items donated or services provided should be sent to us by email at: Philanthropy@WestsideQuiltersLosAngeles.org.

We are recruiting a Scholarship Candidate for our April Jennifer Rapacki Workshop. Please contact us by email or phone if you have recommendations for this upcoming workshop on PhotoShop Elements for Quilters. The Candidate will need to bring a Laptop and Mouse. A free trial of PhotoShop Elements 9.0 software can be loaded at the workshop.

Peggy Belcher-Dixon and Pamela Johnson, Philanthropy & Education Co-Chairs

THE TREASURER'S REPORT

Opening Balance March 1, 2012		\$10,921.40
INCOME		
Amazon (Feb. 28)	\$ 18.32	
Workshop Fees	50.00	
TOTAL INCOME		68.32
EXPENSE		
Check Printing	(49.90)	
A. Belden 03/17 Workshop	(1,045.46)	
TOTAL EXPENSE		(1,095.36)
Closing Balance March 31, 2012		\$9,894.36

Due to the Treasurer's absence, deposits were not made promptly at the end of March. Next month!

The current-year fiscal budget calls for charitable donations of \$500.00. The December 2011 Holiday Tea donation of \$500.00 was *in addition* to the budgeted amount. So WQ members are encouraged to suggest deserving organizations to receive our FY 2012 donations. Please contact President@WestsideQuiltersLosAngeles.org.

Tina Nord, Treasurer



April 1	Pepper Libow
April 6	Lita Greenberg
April 7	Glenda Crump
April 13	Dorothy Akiyama
April 13	Judy Fritz
April 15	Jody Brkich
April 22	Patti Stewart
April 22	Ron Tapp

PADUCAH NOT ON YOUR ITINERARY?

The show is April 24-28. This year it is possible to choose lectures that you may wish to hear by many different speakers from Alex Anderson to Gerald Roy. There is a small fee for each lecture, but not close to airfare and lodging costs. Go to their website, www.AmericanQuilter.com and click on "Paducah Show webcam."

QUILTING CRUISE REVIEW

In early March of this year WQ member Nancy Sharpe and I went on a 7-day quilting cruise to the Eastern Caribbean—the first cruise adventure either of us has undertaken. I discovered this particular cruise from an e-newsletter by Carol Doak (www.caroldoak.com), a well known teacher and author on paper-piecing. She and two other teachers, Gail Garber (www.gailgarber.com) and Eileen Sullivan (www.thedesignersworkshop.com) collaborated on a paper-piecing project for the cruise; a wall-hanging highlighting their individual piecing. As you can see three distinct parts—Gail fish in the sea, and Eileen cruise ship was at sea, classrooms--the teachers their sewing stations! agency of Stitchin' Heaven this cruise. A Bernina 330 quilter as well as thread, The sewing rooms were quilters could enjoy sewing as they desired. There was also a technician on-hand during class time in the event there were any difficulties with a sewing machine. The quilters just needed to bring basic sewing/quilting items detailed on a supply list provided by the travel agency.



approaches to the technique of paper from the image of the project, there are designed the sky, Carol designed the seabed. Each day the classes were held. There were three rotated and the students remained at Stitchin' Heaven Travel, the travel Quilt Shop in Quitman, Texas sponsored sewing machine was provided for each fabric pack for the project and irons. open each night until midnight, so time for as much or as little sewing time

For someone who never thought she would venture on a cruise, I had a great time. The cruise itinerary for the quilters was the perfect blend of quilting/sewing, plenty of time to enjoy the ship and the ports of call (Nassau, St. Thomas and St. Maarten). The ship, Royal Caribbean *Allure*, is the largest cruise ship in the world (something I did not discover until after I had registered for the cruise). The 60 quilters on the cruise were among the 7,500 passengers and 2,500 crew members on board, but it never felt crowded (except a dinner time, when there was a rush to the elevators). There was every amenity one could imagine on-board—swimming pools, rock climbing, basketball, tennis, volleyball, fitness center, theater, ice rink, promenades featuring shopping, dining, lounges and special areas for children and teens. Nancy and I met people on the cruise who were on this specific trip because they wanted to experience the *Allure*, and were somewhat bemused that it was the quilting aspect that drew the two of us rather than the specific ship! If the combination of teachers and destination appeal to me, I would be interested in venturing out on a cruise once more. For those of you interested in checking out upcoming quilting cruises and other quilting adventures here are some websites you might want to view (in no particular order): www.worldofquiltstravel.com; www.quiltcruises.com; www.stitchinheaven.com; www.sewmanypieces.com; www.timeforquilting.com; www.quiltcampatsea.com; www.quiltretreatatsea.com.

Submitted by Veronica Gray

FAVORITE SEWING TOOLS

President Sally Wright wrote in her newsletter column last month about some of her favorite tools (laaarrge rulers, magnifier, finger stiletto).

Kimberly Giancola wrote in about a new product, Betty Bands, for help in free motion sewing. These are palm grips which leave fingers free to maneuver. Kimberly describes them as “fabulous, easy to wear, inexpensive, effective” and especially good when working on large areas. She bought hers at www.SteadyBetty.com. Kimberly also is a fan of the Quilting Halo, a red rubberized ring designed by Sharon Schamber which keeps fabric taut for machine work. This is available through www.freemotionslider.com.

Tina Nord's favorite sewing room tool is the Seam Stick. This is like a wooden 16" dowel cut in half the long way and used to press open seam allowances. No bubbles or pleats or imprints from your iron. Order through www.nancysnotions.com.

Here is a helpful sewing technique from Aileen Cooke. She discovered this when trying to make a lining for the back of her daughter's swimsuit. Aileen laid paper over the back of the suit and rubbed the outside outline with a crayon. Quick and accurate! Recently Aileen used this pattern-making method to make leggings for her 4-year-old grandniece.

FREE! SCCQG SPECIAL 'MEET THE TEACHERS' WITH QUILT EXHIBITS AND VENDORS

Saturday, April 14 – 9:30 AM to 3:00 PM

*Carson Community Center (off the 405
at 801 East Carson Street, Carson 90745)*

The annual 'Meet the Teachers' event from the Southern California Council of Quilt Guilds, formerly in a format for guild Program chairs, has been expanded to a *free* event for all quilters. Over 45 quilt teachers will have a booth/table space to display up to three quilts each. Also – demonstrations, door prizes, food, and opportunity quilts. And vendors! The tentative vendor list includes **ABC Patterns, Creation Station, Custom Creation, Georgia's Quilt Obsession, Legacy Batting, Machines Plus, Quilt Album, Starring Night Hollow, Sweet Treats.**

Here is the teacher list as of April 4: **Betty Alofs, Laurel Anderson, Patricia Beaver, Don Beld, Anelie Belden, Raylene Bement-Salazar, Phyllis Binkley, Janet Botroff, Karen Brow, Lyn Brown, Lisa Coulombe, Sylvia Davis, Dawn Farrier, Jake Finch, Bobbi Finley, Claudia Gomez, Rana Heredia, Cathy Hoover, Rose Hughes, Sam Hunter, Marjorie Johnson, Nadine Kirk, Joy Lily, Lyn Mann, Jerry Petersen, Leora Rankin, Jennifer Rapacki, Sue Rasmussen, Pat Rollic, Kris Sasaki, Linda Schmidt, Julie Silber, Judy Sisneros, Jan Steffen, Marcia Stein, Shelley Swanland, Marguerette Tate, Janet Tenorio Coscarelli, Ann Turley, Cathy Van Bruggen, Rita Verroca, Terry Waldron, Sherry Werum, Laura West-Kong, Sheila Williams.**

DON BELD'S POPULAR BOOK "CIVIL WAR QUILTS"

WQ members were lucky enough to hear Don Beld make a presentation at our February general meeting. Don is the co-author with Pam Weeks of the new book, *Civil War Quilts*. The book is available for purchase on Amazon and Barnes and Noble. Don also will be present at the April 14 SCCQG meeting in Carson and will not only sell you a copy of his book, but he will autograph it, too.

CAMARILLO QUILT SHOW – MAY 5-6

Looks like a great quilt show coming. The Camarillo Quilters Association show, "Quilting by the Sea, It's the Place to Be!", will be held at the Ventura County Fairgrounds. Many familiar vendors will be there: Pincushion Boutique, Monica's Quilt & Bead Creations, Quilt Emporium, and Quilter's Studio. Tickets are available at \$8, in advance, online. See their website for more information: www.camarilloquilters.org.

SOUTH BAY'S FASHION SHOW IS JUNE 30

Miyako Hybrid Hotel in Torrance

The South Bay Quilters Guild has a special Fashion Show this year. *Celebration of the Needle* will feature Mme. Fumi Akutagawa speaking about "Hari Kuyou" [Needle Day]; a fashion show of women's, men's and children's kimonos; wearable art vendors with fashions for sale before and after the program.

This event, from 11:30 am to 3:00 pm, includes luncheon. Tickets are available for \$49.00 (non-South Bay members). See website for more information – www.SouthBayQuiltersGuild.org.

TANNER'S IN WESTCHESTER IS LOOKING

Ian Gittins of Tanner's Sewing and Vacuum Center in Westchester is looking to hire a sewing instructor to teach beginning to advanced skills in garment, alterations, home decorating, craft, and gift sewing. Quilting, too! Someone experienced in teaching kids and teens is especially desirable. Responsibilities include creating schedules (mandatory Saturday Kids and Teen class, and kid/teen summer and winter camps), supplies, samples for classes, class content, descriptions for newsletters and other media materials. Serger skills are a plus. Are you interested? Or do you know someone who should be? Contact Ian at 310/670-2429.

A LITTLE CULTURE COULDN'T HURT

Fowler Museum at UCLA

At the recent WQ Mini-Group Tea, members were encouraged to involve their mini-groups in shopping excursions, tours, and cultural events in addition to the usual, highly-desired friendly get-togethers and lunches that mini-groups are known for.

The Fowler Museum is right in our back yard. Three textile-related current exhibitions:

"Second Skins – Painted Barkcloth from New Guinea and Central Africa"

Now through August 26

Exhibition explores barkcloth's contemporary migration from the body (body painting and tattoos) to the gallery wall.

"Order and Disorder: Alighiero Boetti by Afghan Women"

Now through July 29

25 pieces by Italian artist Boetti appear with documentary photographs of the women who embroidered them, plus samples of traditional Afghan textiles that may have inspired the artist in his use of embroidery as a medium.

"Japanese Pictorial Ikats from the Krauss Collection"

Now through June 24

30 examples of Japanese e-gasuri or 'picture ikat' cloth selected from a recent museum donation of more than 200.

A LITTLE MORE CULTURE

Recommended by Aileen Cooke

The Japanese American National Museum (JANM) has a new show **"Folding Paper: The Infinite Possibilities of Origami."** It is much evolved from the origami of folded cranes and has some amazing and beautiful inventions (a paper-folded dress and even a dress of satin). The show is on through August 26. You might want to try the Chado Tea-room attached to the museum, too. For details, see www.janm.org.

Aileen says that she folded pieces of her husband's favorite old shirts for an origami based, folded shirt quilt. She has several folded cloth/origami quilt books which she'll bring to the May general meeting for your inspection and inspiration.

6th ANNUAL SO CAL SHOP HOP

July 20 to August 5

More than 30 quilt shops are involved in 2012. Beginning in early July, you can purchase a "Passport Package" at your participating 'home store.' This includes things like a tote, pin, and 20% discounts. For more info, see www.socalshophop.com.

INTERNATIONAL QUILT FESTIVAL – LONG BEACH

July 27-29

Long Beach Convention Center

The IQM/IQF is looking for workers (a) to help hang special exhibit quilts before the show; (b) to be guardians to watch over the quilts during the show; (c) to be doorpersons to take tickets; (d) and to help take down special exhibit quilts after the show closes. These are paid positions. Parking is also paid and workers receive free show entry for each day worked. If you are interested, please email Terri Winsauer at twinsauer@sbcglobal.net with your name, address and phone number and mention your interest in the *Long Beach* show.

A NEIGHBORLY QUILT CALENDAR

You may be interested in attending meetings of our neighbor guilds, as we welcome quilters from other guilds. Listed here are the meetings, workshops and events of note through July. **Westside Quilters** events are shown here in pink!

See also the Event Calendar at the Southern California Council of Quilt Guilds website -- www.sccqg.org.

Glendale Quilt Guild	www.GlendaleQuiltGuild.org Contact: Info@GlendaleQuiltGuild.org
San Fernando Valley Quilt Association	www.SFVQA.org For contact, go to website, then Committees and link to Program
Santa Monica Quilt Guild	www.SantaMonicaQuiltGuild.org Contact: Info@SantaMonicaQuiltGuild.org
South Bay Quilters Guild	www.SouthBayQuiltersGuild.org For contact, go to website, Contact Us and link to Program VP
Valley Quiltmakers Guild	www.ValleyQuiltmakers.org Contact: VQG@ValleyQuiltmakers.org

DATE	SPEAKER/TEACHER	GUILD
April 4	Leora Raikin <i>African Folklore Embroidery</i>	Santa Monica
April 8	Sylvia Davis Workshop <i>Kumasi Star Quilt</i>	San Fernando
April 9	Sylvia Davis <i>Ethnic Fabric Quandry</i>	San Fernando
April 11	Sue Rasmussen <i>A Desperate Housewife's Quilt Journey</i>	Glendale
April 12	Sylvia Pippin	Valley Quiltmakers
April 13	Sylvia Pippin Workshop <i>Tropical Flowers Sashiko and Applique</i>	Valley Quiltmakers
April 14	SOUTHERN CALIFORNIA COUNCIL OF QUILT GUILDS "Meet the Teacher Event & Show" Carson Community Center. See www.sccqg.org	
April 15	Sue Rasmussen Workshop <i>Curved Paper Pieced Flying Geese</i>	Glendale
April 17	Martha Nordstrand <i>The Real Reason You Love Quilts</i>	South Bay
April 18	Martha Nordstrand Workshop <i>The Great Glue Stick Caper or How a Little Screwdriver Changed My Applique Life</i>	South Bay
April 21	Jennifer Rapacki Workshop PhotoShop Elements for Quilters	Westside Quilters
May 2	Karla Alexander <i>Lift the Quilts Out of Your Stash</i>	Santa Monica
May 3	Karla Alexander Workshop <i>Gently Curved Piecing</i>	Santa Monica

DATE	SPEAKER/TEACHER	GUILD
May 8	"Piecing It Together" (the Musical) Pennyroyal Players	South Bay
May 9	Claudia Gomez	Glendale
May 10	Sandy Bosley	Valley Quiltmakers
May 11	Sandy Bosley Workshop <i>Landscape Quilting</i>	Valley Quiltmakers
May 11	Sally Collins Workshop <i>My Stars</i>	Westside Quilters
May 12	Sally Collins <i>Quality Workmanship & How to Achieve It</i>	Westside Quilters
May 12	Claudia Gomez Workshop <i>Fabric Dyeing</i>	Glendale
May 13	Don Linn Workshop <i>Xuberance or Machine Quilting</i>	San Fernando
May 14	Don Linn <i>Quilt-a-Matic</i>	San Fernando
June 6	Rita Verroca <i>Heritage Quilts with Delightful Arrangements</i>	Santa Monica
June 9	Rita Verroca Workshop <i>Applique</i>	Santa Monica
June 14	Sally Collins	Valley Quiltmakers
June 15	Sally Collins <i>Pieced Baskets</i>	Valley Quiltmakers
June 16	Mary Ellen Sakai Workshop <i>Quilting Charity Quilts</i>	Glendale
June 23	Linda Schmidt Workshop <i>Elements in Fabric – Earth, Wind, Fire & Water</i>	Westside Quilters
June 30	"Celebration of the Needle" Fashion Show (Kimonos) Miyako Hybrid Hotel in Torrance Luncheon tickets for sale – see South Bay website	South Bay
July 7	Billie Lauder Workshop <i>Diamonds Can Be a Quilter's Best Friend</i>	Glendale
July 8	Billie Lauder Workshop <i>Diamonds Can Be a Quilter's Best Friend</i>	San Fernando
July 9	Billie Lauder <i>Quilts – You Asked For It</i>	San Fernando
July 12	Stacie Olsen TBA	Valley Quilters
July 13	Stacie Olsen Workshop <i>Tote Bag</i>	Valley Quilters
July 14	Billie Lauder <i>Quilts – You Asked For It</i>	Glendale
July 20-August 5	SO CAL SHOP HOP See www.socalshophop.com	
July 27-29 [classes before]	INTERNATIONAL QUILT FESTIVAL – LONG BEACH Long Beach Convention Center – see www.quilt.com	

Executive Board Meeting of Westside Quilters The next meeting of the Executive Board will be Friday, April 13, at 10:00 AM in Westwood. As always, the meeting is open to all members with advance notice to our president, Sally Wright. For exact meeting details, please contact Sally at WestsideQuilters@yahoo.com. Please contact our president, Sally Wright, for information about the next Executive Board Meeting.

Note: The Executive Board approved the minutes via email.

**MINUTES OF THE
WESTSIDE QUILTERS EXECUTIVE BOARD MEETING
February 25, 2012**

A meeting of the Executive Board of Westside Quilters ("WQ") was held on February 25, 2012 at the home of Sally Wright. The following board members were in attendance: Aileen Cooke, Luann Jaffe, Sandra Lauterbach, Sally Madigan, Tina Nord, Roberta Walley and Sally Wright ("Sally").

Sally called the meeting to order at 10AM and Sandra Lauterbach recorded the minutes. A quorum of Executive Board members was present. Luann moved that the Executive Meeting minutes from January 15, 2012 be approved. Sally Madigan seconded. The motion was unanimously approved.

Treasurer's Report Tina reported that WQ's current balance is \$10,911.40. WQ received checks from IGive and Amazon for purchases by guild members made via the WQ website.

Nominations Committee Report Aileen reported on the Nominations Committee deliberations. Sally Madigan is willing to do the newsletter with someone else. The candidates for the other positions are: Luann-- Membership, Peggy--Philanthropy, Roberta --Programs, Sally--Vice-President; Tina--Secretary. The following positions are still unfilled: president, treasurer, co-chair programs, and newsletter. The other members of the Nominations Committee are Keiko Tapp, Sharon Whelan, Betsy Barker, and Sandy Ray.

Programs Roberta reported that there are no outstanding contracts. All contracts are signed for 2012 and 3 out of 4 for 2013. The proposed 2013 schedule is: February --Lenore Crawford meeting and workshop; June-- Pam Holland meeting and workshop; August-- Sharon Schamber meeting and workshop; October is open--possibly local artists such as Jane LaFazio or Jamie Fingal. Additional Workshops for 2013: January-- Sylvia Davis; March--Sewing for philanthropy quilts organized by philanthropy chair. April--Potholder quilts with Don Beld; July--no workshop. September --need ideas; perhaps Nancy Green purses. Other ideas discussed included: bus trip to a quilt shop or a class by Tanya Heldman on modern quilts. Discussion was held about a workshop with Susan Else. Roberta will check into her fees for a possible lecture and workshop in October. Other ideas included a demonstration on stained glass quilts by Nancy Sharpe.

Discussion ensued on workshop cancellation policy. It was decided to leave policy as stated in the by-laws, however if a workshop ran in the black, we would entertain refunds on a case by case basis. Roberta reported on workshop signups. It was suggested that Sew Modern be contacted to let them know Jennifer Rupacki will be teaching a workshop on Photo Shop elements for Quilters.

Membership Luann reported that there are no new members. There will be an email blast to members about the Minigroup Meeting. Janet Thornberg, Sandy Ray, Sally and Roberta are interested in coming and discussing the type of mini groups and possible activities. Tina needs an article for newsletter re: minigroups.

Philanthropy (Roberta Walley recorded the minutes until the end of the meeting)
Sally and Peggy delivered "Wounded Warrior" quilts to Arlene Zubrist. Peggy and Sally decided to have a Philanthropy page on the WQ website stating the details of charitable quilt websites and specific dimensions of quilts needed for donations. Fundraiser possibilities were discussed. Tina has spoken to Alex Anderson who is willing to be our speaker at a fundraiser on a date to be determined. There was a brief discussion about quilt shows as fundraisers. It was agreed that quilt shows were no longer a viable way for guilds to raise money.

Newsletter Deadline for submission is March 1.

New Business Board members were asked to prepare a written job description for their successors to use.

Next Board Meeting The next executive board meeting is scheduled for Friday, April 13, 2012 at 10 AM at Sally Wright's home.

The Executive Board Meeting was adjourned at 11:45 AM.

Submitted by:

Sandra E. Lauterbach
Secretary



Our Mission A new kind of guild organized for educational and charitable purposes; to promote cooperation and the exchange of ideas among quilters; to instruct members in methods and techniques of traditional and contemporary creative quilting; to serve minigroups and their philanthropic endeavors within the community; to inspire personal achievement.

Officers

President	Sally Wright
Vice President	Aileen Cooke
Secretary	Sandra Lauterbach
Treasurer	Tina Nord
Membership	Luann Jaffe
Newsletter Co-Editors	Sally Madigan Tina Nord
Philanthropy/Education	Peggy Belcher-Dixon Pamela Johnson
Program	Amy Barer Roberta Walley
Website Manager	Sally Wright
and Hospitality	Nancy Sharpe

Mailing Address Post Office Box 641925
Los Angeles, CA 90064

F.E.I.N. 27-3145733
(Federal Employer Identification Number)

Website
www.WestsideQuiltersLosAngeles.org

Email Contacts

From WQ website, go to Officers (lower right on home page) to see direct links to each officer. For general information, email WestsideQuilters@yahoo.com.

Facebook We're on Facebook. Check out the banner on the WQ website home page (lower center).

Amazon There is a boxed message in the lower center of our website home page giving a direct link to Amazon. By using this link, anything you purchase earns a 4% "dividend" paid directly to WQ. *This only works if you enter the Amazon website from the WQ website link.*

IGive.com This is another way to benefit WQ when shopping on the Internet. Here you need to register (the IGive.com logo appears in the lower center on the WQ website home page and links you directly to IGive.com. Over 800 Internet retailers participate (Barnes & Noble, Bed Bath & beyond, Enterprise Rent-A-Car, Lancome to name a few). Follow the instructions at IGive.com.

Non-Profit Status Westside Quilters is tax-exempt from Federal income tax under section 501(c)(3) of the Internal Revenue Code, and classified as a public charity under section 170 of the Code, according to the determination letter dated May 26, 2011 received from the Internal Revenue Service. The effective date of exemption is June 17, 2010. Donations to Westside Quilters are fully tax-deductible for individuals and other entities such as corporations, partnerships, trusts; Westside Quilters is qualified to accept tax deductible bequests and gifts or transfers of gifts.